



TM

VENIERI
SPA

1.33C

4WS MINI LOADER
MINI BACKHOE LOADER

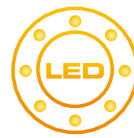


STAGE 5



PARALLEL KINEMATIC

Efficient kinematics, able to guarantee high resistance to stress and an excellent parallel. The compact dimensions help to expand lateral visibility.



LED LIGHTS

LED work lights and lights ensure superior visibility, reduced consumption and battery care.



WHEELS AND STEERING

The machine is very compact thanks to the 4 driving and steering wheels (optional "crab" steering) The 13 cm widened track and 12 "tires are able to offer unbeatable stability even during the toughest uses.



CABIN

It is common opinion that a sacrifice in terms of habitability is inevitable on compact machines. The new XL cab of the VF 1.33C, widened by 15cm from the jamb, guarantees the operator optimal comfort and allows non-stop operation. Inside the cab you can find also ergonomic interiors with standard "all in 1" Joystick, armrests, footrests and cabin pressurization with internal air recirculation.



TOTAL STABILITY

Excellent stability in any situation, thanks to low center of gravity, track width widened and **oscillating front axle** (mechanically lockable - opt.)



MULTIFUNCTIONAL MACHINE

In addition to being an excellent front loader and a rear excavator, it is a **multifunctional machine** with a **high hydraulic flow**. Thanks to the universal attachments there are no limits to use countless equipments.



53 HP JAPANESE TECHNOLOGY

The **Kubota engine, 3 cylinders, turbo, electronic injection common-rail** is aligned with the latest regulations **Stage V/Tier 4F** and delivers a high couple even at low revs.



TIRES FOR EVERY SIZE TYPE AND APPLICATION

Wide range of approved tires, specific for different use: both industrial and special work.



100% VENIERI DESIGN

Born in 1992, this model has undergone a decisive **evolution** over the years. Thanks to the Venieri Style Center, it has remained faithful to the **"family feeling"** while introducing notable items novelties in terms of **comfort** and **performance**, such as the new cabin livability.

1.33C

4-WHEEL STEERING BACKHOE "Z" KINEMATICS



DIESEL ENGINE

3 cylinder in line engine, turbocharged, common-rail injection with electronic control, exhaust gas recirculation EGR, water cooled, dry filtration, diesel oxidation catalyst (DOC), diesel particulate filter (DPF). Emissioned according to CE 97/68 - Stage V/Tier 4f

Type	Kubota D1803-CR-T
Max Power	39kW - 53 HP
Rated rpm	2.700
Rated Power Gross SAE J1995	37 kW - 50 HP
Rated Power Net SAE J1349	35,3 kW - 47 HP
Max torque	Nm 150,5
Bore	mm 87
Stroke	mm 102,4
Displacement	cm ³ 1.826



ELECTRIC SYSTEM

Battery	12 Volt
Capacity EN 60095-1	80 Ah - 770 A
Alternator rating	60 A
Reverse warning	Standard
Wiring according to standards	IP 67 - DIN 40050



TRANSMISSION

Hydrostatic transmission with closed circuit automatic power regulation, variable - displacement pump and two forward/reverse speeds with electric single-lever control.

STD	Forward	Reverse
1 st Gear	0÷8	0÷8
2 nd Gear	0÷20	0÷20



AXLES

Designed for heavy duties, all wheel-drive. Automatic self-locking differentials. Planetary final drives in each wheel. Front axle: steering and oscillating up to a total angle of 15°. Rear axle: steering and fixed to the frame.



BRAKES

Service: disk brake hydraulically operating on front axle, working on all wheels.

Parking: mechanical drum brake operating on service brake, manually actuated.



TYRES

Standard	12 - 16.5
Optional	10 - 16.5 • 10.0/75 x 15.3



STEERING

Articulated frame with servo-assisted hydraulic LOAD SENSING steering units.

Inner tyres turning radius	mm 780
External tyres turning radius	mm 2.310
External bucket turning radius	mm 2.790



HYDRAULIC SYSTEM

LOAD SENSING gear pump with priority valve for the steering circuit, modular three-element control valve for the loader, modular six-element control valve for the backhoe.

Double acting hydraulic cylinders. Hydraulic oil cooling radiator. Full-flow oil filter on the drain pipe.

Single cloche-lever "all in one" with 4 positions for lifting control and 3 positions for bucket control.

Max flow	lt/1'	54
Loader relief valve pressure	bar	210
Steering relief valve pressure	bar	140
Lift cylinders	mm	90x455
Bucket cylinder	mm	65x500



SERVICES CAPACITIES

Engine	lt	8
Front axle + gear box	lt	2,8
Rear differential	lt	2
Planetary gear	lt	0,2
Hydraulic circuit	lt	50
Brake system	lt	0,3
Fuel	lt	45
Water radiator	lt	11



TECHNICAL FEATURES

LOADER

Standard bucket capacity	m ³	0,45
Standard bucket width	mm	1.550
Breakout force	kg	2.500

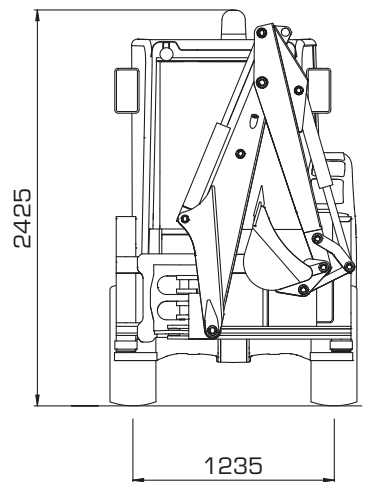
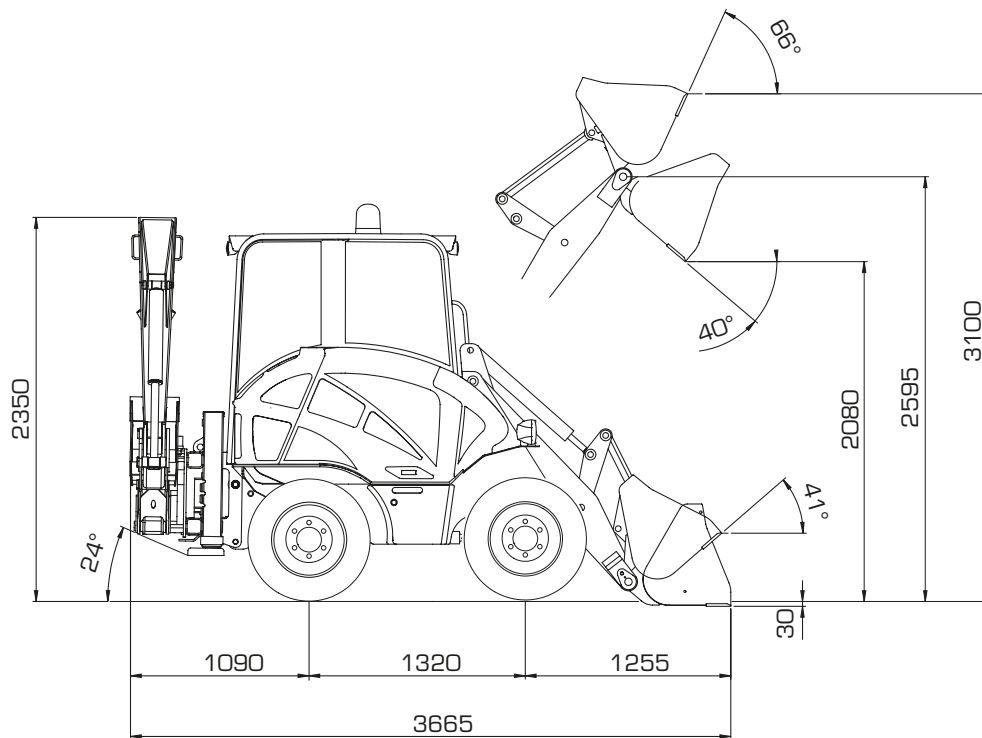
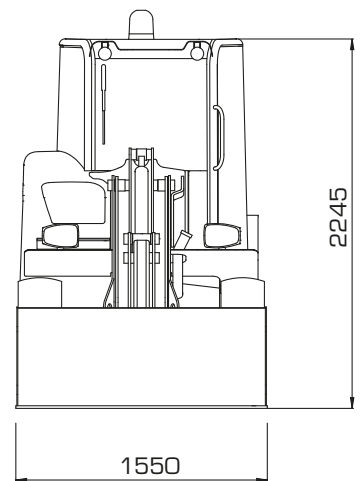
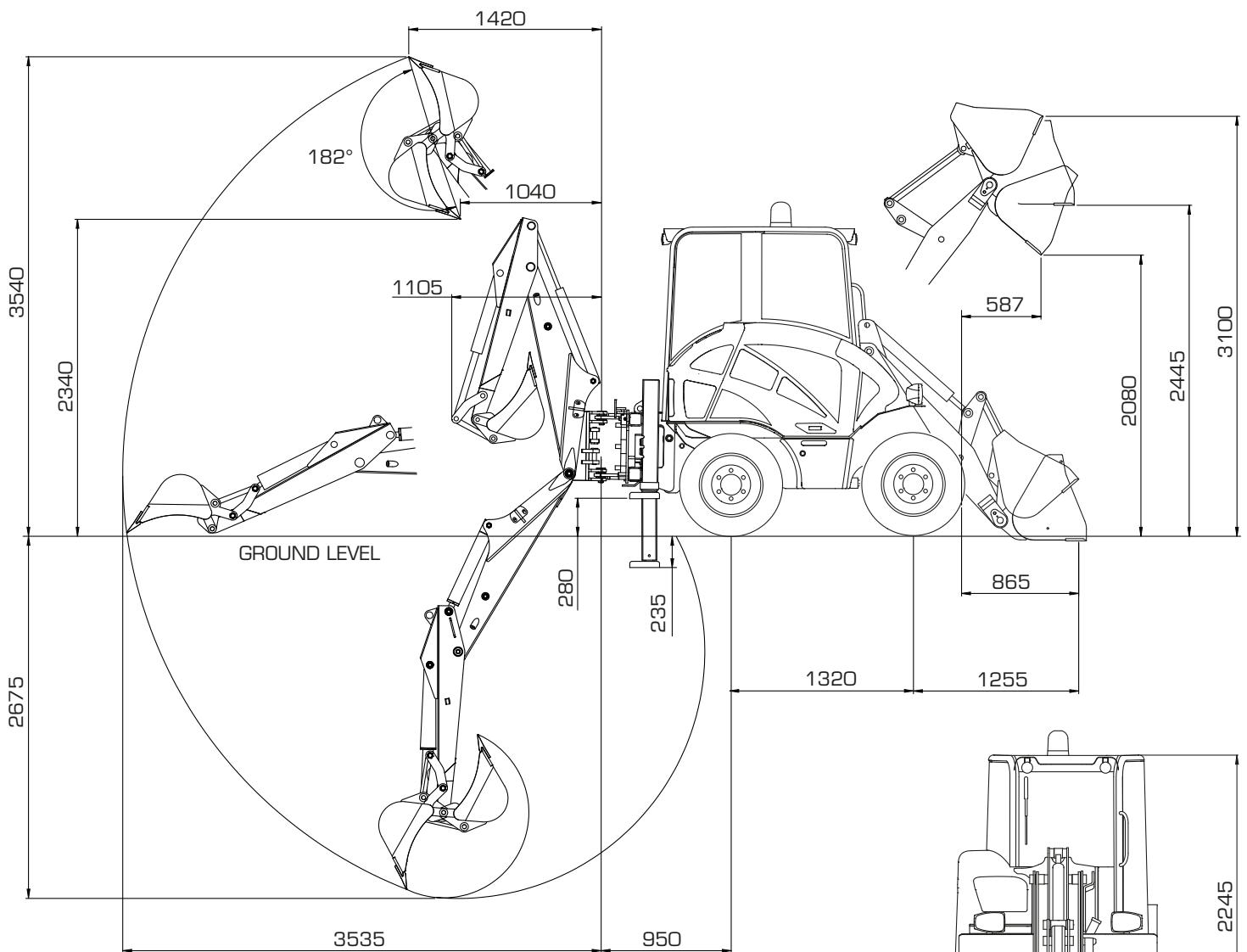
BACKHOE LOADER

Type	VF	2.75
Standard bucket capacity	lt	45
Standard bucket width	mm	300
Dipper stick max. penetration capacity	kg	1.400
Max breakout force on the bucket tip	kg	2.600
Lifting capacity on the bucket pin at the max.height	mm	700
Rotation		180°
A - Max. digging depth	mm	2.750
(Telesc./optional)	mm	3.250
B - Standard digging depth	mm	2.600
(Telesc./optional)	mm	3.100



DIMENSIONS AND WEIGHT

Max lenght in transfer (loader)	mm	3.460
Max. length in transfer (backhoe loader)	mm	3.610
Max. width in transfer	mm	1.550
Overall tyre width	mm	1.500
Wheel tracks width	mm	1.235
Ground clearance	mm	265
Standard operating weight (loader)	kg	3.000
Standard operating weight (backhoe loader)	kg	3.150
Max permissible weight	kg	3.450



LOADING FORK (KG) Centre of gravity 500 mm

Static tipping load - Full turn	1.450
Payload EN 474-3 (80%)	1.150
Payload EN 474-3 (60%)	870
Payload DIN 24094 (50 %)	725

LOADING BUCKET PERFORMANCE (KG)

Static tipping load - Full turn	2.000
Payload (50%)	1.000

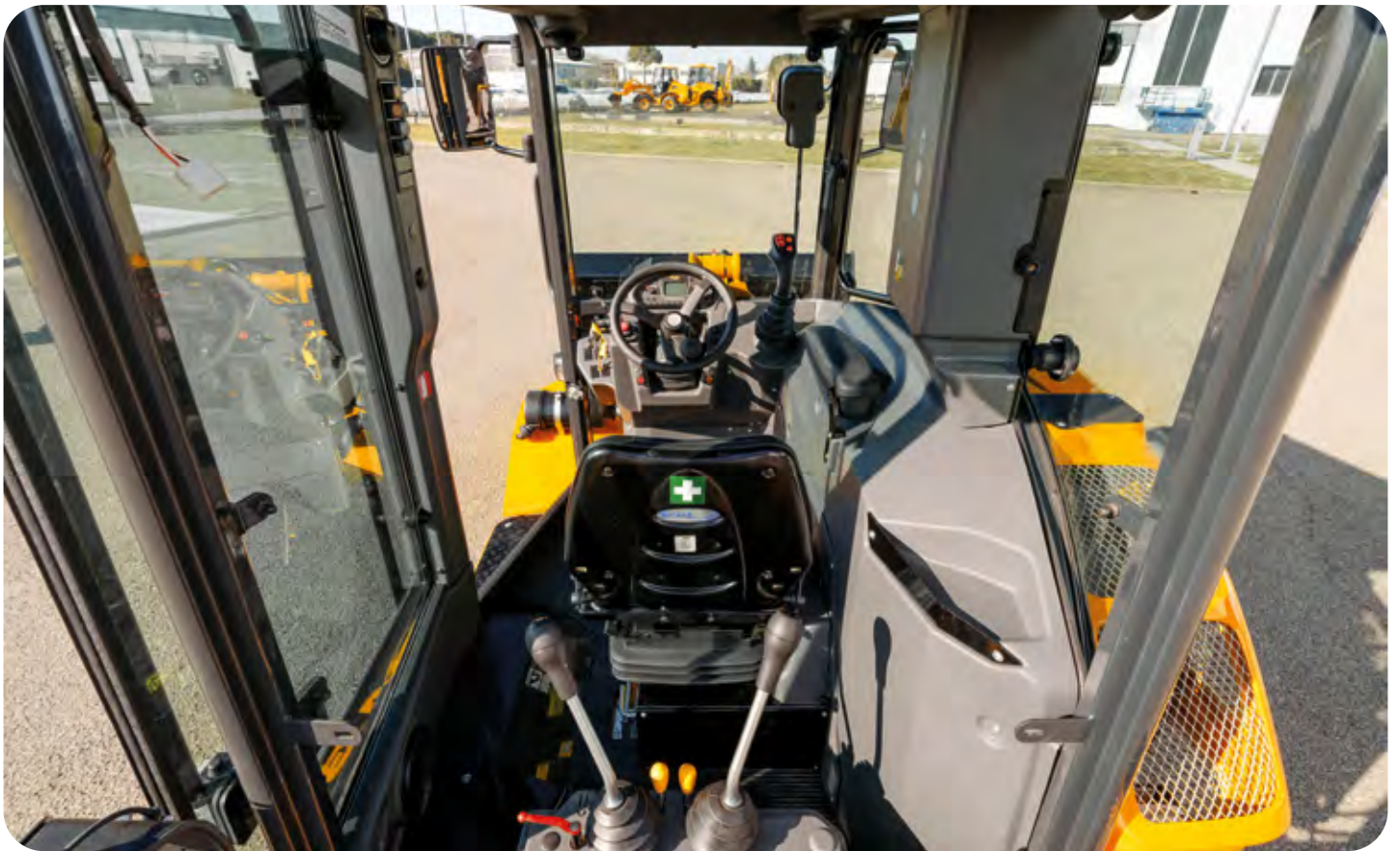


MAINTENANCE

One of VF 1.33C profitability key factor is represented by the machine extremely reduced downtime. Therefore it has been designed to allow routine inspections to be made quickly and easily: just operate a simple catch to open the engine hood and everything's within your reach.

THE CABIN

Optimal accessibility, guaranteed by the reduced distance from the ground, the **total visibility** from the large 360 ° glasses, the ergonomic arrangement of the renewed instrumentation and a **driver's seat** with extremely large spaces for the category, make the cab of the new VF 1.33C an **optimal environment** where operate continuously.



**BASIC
MACHINE**


Battery switch	•
Maintenance tool set	•
Fuel preheating (cold climates)	0
Cap with key for fuel tank	•
Self-locking proportional differential on the front axle	•
Self-locking proportional differential on the rear axle	0
Steering and oscillating front axle with 15 °	•
Steering rear axle and fixed to chassis	•
Towing hook (anchoring and vehicle recovery, not towing equipment)	•
Rotating lamp	•
Soundproofing	•
User manual and Spare parts catalogue	•
Type approval for road circulation	•
Arm and bucket lock safety device	•
Device for bucket positioning parallel to the ground	•
Lever device for forward movement speed reduction	0
Floating arm system	•
Safety block valves on bucket cylinder	0
Safety block valves on lifting cylinder	0
"Venieri GLOBAL" system monitoring (Annual subscription not included)	0
Double-speed hydraulic fan	•
Reversible fan for radiator cleaning	-
Negative parking brake	-
Hydraulic service disk brake on rear axle	•
Inch pedal integrated on the brake pedal	•
Manual accelerator	•
Greasing points grouped on frames	-
Automatic centralized greasing system	-
LED Road lights front and rear	•
"Crab" steering	0
Water preheating system	0
Biodegradable hydraulic oil	0
Hydraulic oil ISO 46 (cold climates)	0
Vortex prefilter	0

**CABIN
EQUIPMENT**


ROPS/FOPS 1st Level, pressurized and soundproofed	•
Canopy ROPS/FOPS I	0
Front and rear windscreen wiper with washer	•
LED work lights (2 front + 2 rear)	•
Document compartment	•
Seat with mechanical suspension	•
Seat with pneumatic suspension	0
Seat armrests	-
Buzzer	•
Cabin carpet	•
Radio preparation	•
Supplementary socket 12V	•
Air Conditioning	0
Ceiling lamp	•
Sun visor	-
Rear view mirrors	•
Heatable rear view mirrors	-
First-aid kit	0
Fire extinguisher 2kg	0
Seat belt	•
Instrumentation and dashboard with LCD display	•
Safety glass breaker	0

**MAIN
EQUIPMENTS**


FRONT / LOADER	
Hydraulic quick coupler	0
Mixing bucket	0
4-in-1 multipurpose bucket	0
High material bucket	0
Universal lifting forks	0
Shedder	0
Hydraulic brush cutter	0
Asphalt / concrete planner	0
Asphalt planner	0
Snow blower	0
Snow blade and "V" type snow blade	0
Hand operating hammer	0
Polishing brush	0
Sweeper	0
Trencher	0
High-tip bucket	0
High flow kit	0
Unpressurized return line	0
Double auxiliary line	0

REAR / BACKHOE LOADER

Rear excavator arm STD	•
Rear arm locking system for travelling on the road	•
Telescopic rear arm	0
Rear excavator arm with hydraulic lateral translation	0
Hydraulic Hammer	0
Bidirectional hydraulic drill	0



Via Piratello, 106 - 48022 Lugo (RA) - ITALY
Tel. +39 0545 904411 Fax +39 0545 30389
e-mail: info@vf-venieri.com | www.vf-venieri.com

Spare Parts
Tel. +39 0545 904429 Fax +39 0545 24555
e-mail: ricambi@vf-venieri.com