

simex.it



PRODUCT CATALOGUE

SIMEX
HEAVY MADE EASY

**A SOLID
BACKGROUND &
WORLDWIDE
PRESENCE**



HYDRAULIC ATTACHMENTS FOR EARTHMOVING MACHINES

SIMEX IS THE TECHNOLOGICAL PARTNER OF REFERENCE FOR COUNTLESS APPLICATIONS, EVEN THE MOST CHALLENGING AND COMPLEX.

Thanks to a know-how developed over time, the patrimony of its production and investments in R&D, Simex provides concrete, highly efficient responses to the ever new and complex requirements of the market. The company, while constantly interfacing with the markets of reference, harmonizes production and sales based on the contingent and potential demands of end users. Simex attachments, marked by superlative durability and engineering excellence, guarantee the optimization of costs and execution times with consequent benefits for the dealer and user.

**HEAVY
MADE
EASY**



1991
Foundation of Simex

1996
New production facility

2003
Second production facility and new demo area

2006
Introduction of new robotic welding stations

2010
Third warehousing facility and R&D area

2016
Opening of "OOO Simex Rus" in Moscow

2017
Production of the 30,000th planer for asphalt; expansion of second production facility

2019
Opening of fourth logistics and production facility

TAKE THE NEXT STEP



KNOW HOW

Simex know-how is driven by a constant and attentive eye on our markets of reference.

The consolidated skills exemplified by our technical and sales departments stem from the in-depth study of how our products will best meet the application. Simex develops products by focusing on the technical problems specific to each application scenario.



POWERFUL PRODUCTION

Simex products are designed and engineered to be exceptionally durable and high-performing.

Our attachments are created to solve specific problems related to the myriad applications they are used for, while guaranteeing highly efficient production for the end user.

The production process is guided by a deep awareness that we are a true technological partner for all our customers in Italy and around the world.



R&D

Constant investment in R&D is an essential lever for the success of Simex and the pioneering quality of our production.

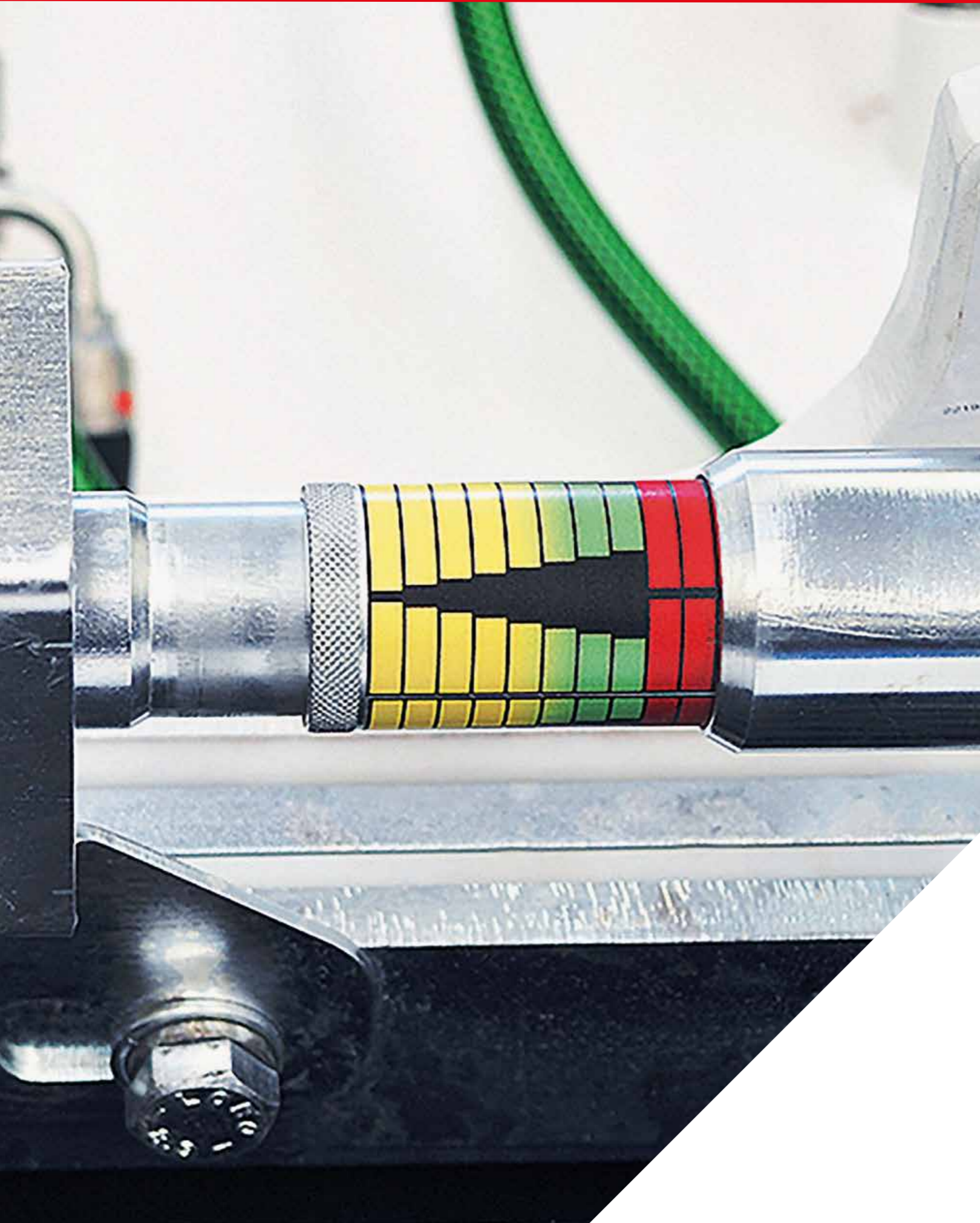
The numerous patents Simex has filed over the years are testimony of how Simex maintains and continuously renews its innovative leadership. The company continually produces innovative solutions for the many, and increasingly complex, demands of a market in continuous evolution.



FULL LINE PRODUCTION



<i>Pag. 09</i>	PERFORMER	Simex Patent
<i>Pag. 11</i>	PL	Self-levelling ROAD PLANERS
<i>Pag. 17</i>	PL	Self-levelling STABILIZERS
<i>Pag. 21</i>	PLC	Self-levelling ROAD PLANERS with conveyor belt
<i>Pag. 25</i>	PL	PLANERS For special applications
<i>Pag. 29</i>	RS	PLANERS FOR RUMBLE STRIPS
<i>Pag. 33</i>	RW/RWA/RWS	Self-levelling WHEEL SAWS
<i>Pag. 39</i>	T/TA	WHEEL SAWS For special applications
<i>Pag. 45</i>	ST	ASPHALT FLOAT
<i>Pag. 49</i>	CB	CRUSHER BUCKETS
<i>Pag. 53</i>	CHD	CHAIN TRENCHERS
<i>Pag. 57</i>	CT	VIBRATING WHEEL COMPACTORS
<i>Pag. 61</i>	BC	BEACH CLEANER



SIMEX
• patent •

PERFORMER

Performer let you work better, faster with more productivity.

PERFORMER, THE PERFORMANCE OPTIMIZER

Informs the operator how to work with Simex attachments to maximize their power and performance (*optional*).

SELF-CALIBRATING

The Simex patent allows the device to self-calibrate exactly to the maximum pressure of the base machine the attachment is mounted on.

EASY TO READ

Positioned where the operator can keep a constant eye without being distracted from machine operation. Has different colors and a graphic scale for easy reference.



SCAN THE QR CODE WITH A SMARTPHONE TO SEE THE PERFORMER VIDEO.

SELF-CALIBRATION



ERGONOMIC POSITION





RANGE

PL

SELF-LEVELLING

ROAD PLANERS

PL 25.10

PL 35.15

PL 40.15

PL 45.20

PL 45.20 HP

PL 50.20

PL 60.20

PL 60.20 HP

PL 75.20

PL 1000

PL 1200

PL 1500

PL 2000

PL 40.35

- Constant planing depth
- Perfect finishing with side-by-side passes
- Maximum safety
- Stability and no vibrations
- Optimal visibility for the operator

SELF-LEVELLING ROAD PLANERS

PL 25.10
PL 35.15
PL 40.15
PL 45.20
PL 45.20 HP
PL 50.20
PL 60.20
PL 60.20 HP
PL 75.20
PL 1000
PL 1200
PL 1500
PL 2000
PL 40.35



Simex PL self-levelling road planers are designed for removing the entire layer of asphalt or concrete in preparation for trenching or for milling deteriorated sections for later resurfacing. Created to mill pre-set sections on hard and compact surfaces such as asphalt and concrete, they allow the possibility to reuse milled material for backfilling trenches.

Thanks to the exclusive self-levelling system, planing depth is constant in any condition.

SIMEX **PERFORMER**
• patent •



ADVANTAGES

- Constant planing depth
- Perfect surfaces with side-by-side passes
- Maximum safety
- Stability and no vibrations
- Optimal visibility for the operator

TECHNICAL DATA	STANDARD FLOW PLANERS		HIGH FLOW PLANERS	
	PL 25.10	PL 35.15	PL 40.15	PL 45.20
Standard drum				
Width	mm Inch	250 10	350 14	400 16
Depth	mm inch	0 - 70 0 - 2,7	0 - 110 0 - 4,3	0 - 150 0 - 5,9
Special drums				
Max. depth with reduced width	mm inch	130 5	150 6	170 7
Depth adjustment		independent RH/LH, mechanical - hydraulic optional		
Side shift		mech.	mech/hyd. *	mech/hyd.*
Transverse tilt		-	autom*	autom/hyd.*
Tilt		-	16°	16°
Weight standard version (1)	kg lbs	350 770	590 1300	660 1450
Weight version with integrated spray system (1)	kg lbs	-	750 1650	820 1800
Required oil flow	l/min gpm	30 - 60 8 - 16	45 - 80 12 - 21	65 - 115 17 - 30
Max. oil pressure	BAR psi	250 3625	250 3625	250 3625
Dust control spray system		kit for SSL roof with electro-pump or built into side shift with electro-pump		

HIGH POWER PLANERS		HIGH POWER AND HIGH FLOW PLANERS			MILLING				HIGH DEPTH
PL 45.20 HP	PL 50.20	PL 60.20	PL 60.20 HP	PL 75.20	PL 1000	PL 1200	PL 1500	PL 2000	PL 40.35
450 18	500 20	600 24	600 24	750 30	1000 40	1200 48	1500 60	2000 80	400 16
0 - 170 0 - 6,7	0 - 170 0 - 6,7	0 - 170 0 - 6,7	0 - 170 0 - 6,7	0 - 170 0 - 6,7	0 - 130 0 - 5	0 - 130 0 - 5	0 - 130 0 - 5	0 - 130 0 - 5	100 - 350 4 - 13,7
230 9	230 9	230 9	230 9	230 9	130 5	130 5	130 5	130 5	350 13,7
independent RH/LH, mechanical - hydraulic optional									
hydraulic									
autom/hyd.*									
16°	16°	16°	16°	16°	16°	16°	16°	16°	16°
860 1900	900 2000	950 2100	1000 2200	1050 2300	1090 2400	1210 2660	1290 2840	1630 3600	1150 2530
1020 2150	1060 2330	1110 2440	1160 2550	1210 2660	1250 2750	1370 3000	1555 3430	1895 4170	-
100 - 150 27 - 40	100 - 150 27 - 40	100 - 150 27 - 40	110 - 170 29 - 45	110 - 170 29 - 45	110 - 190 29 - 50	120 - 190 32 - 50	130 - 200 34 - 53	130 - 200 34 - 53	110 - 170 29 - 45
310 4500	310 4500	310 4500	310 4500	310 4500	310 4500	310 4500	310 4500	310 4500	310 4500
kit for SSL roof with electro-pump or built into side shift with electro-pump									

(1) User is responsible for ensuring that the characteristics of the prime mover suit the weight and specifications of the attachment.

(*) On request

Simex does not accept responsibility or liability for the information provided. Technical modifications may vary without prior notice.

(1) User is responsible for ensuring that the characteristics of the prime mover suit the weight and specifications of the attachment.

(*) On request

Simex does not accept responsibility or liability for the information provided. Technical modifications may vary without prior notice.

- PL 25.10
- PL 35.15
- PL 40.15
- PL 45.20
- PL 45.20 HP
- PL 50.20
- PL 60.20
- PL 60.20 HP
- PL 75.20
- PL 1000
- PL 1200
- PL 1500
- PL 2000
- PL 40.35

Utilities

Quarries and mines

Demolition

Port and underwater works

Construction and building

Infrastructure

Tunneling

Agriculture and forestry

Recycling

Roadworks

Trenching

Mini-excavator

Excavator

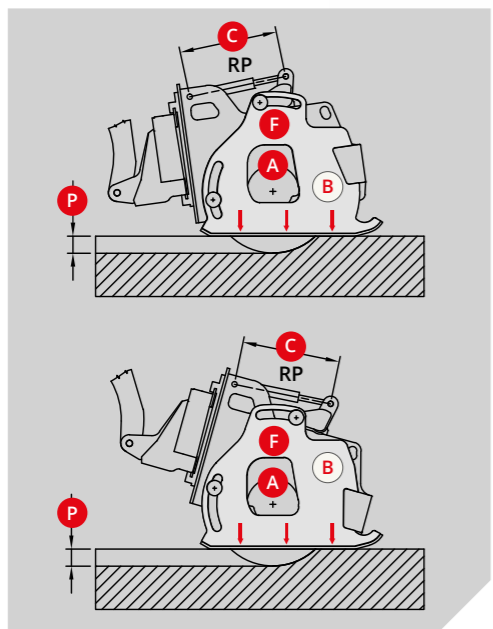
Skid steer loader

Front loader

Backhoe

SELF-LEVELLING SYSTEM: CONSTANT PLANING DEPTH AT ALL TIMES

The self-levelling to the work surface ensures constant planing depth in any condition regardless of the ground contour and the position of the attachment with respect to the base machine. The lateral slides of the planer automatically align to the milling surface, providing maximum stability. The slides move independently of each other and precisely follow the surface to the right or left. The independent depth adjustment on RH and LH sides combined with the self-levelling system achieves perfectly flat surfaces with side-by-side passes.



SIMEX
• patent •



INDEPENDENT RH-LH DEPTH ADJUSTMENT.

Mechanical or hydraulic adjustments (optional).
Right and left depth indicator.

The RP depth adjuster (mechanical or hydraulic) moves the pivot up and down **F** to set the working depth **P**. If the planer is not horizontal to the ground, the side panel **B** rotates forward or back with respect to the virtual axis **A**.

SIMEX **PERFORMER**
• patent •

Performer: informs the operator how to work with Simex attachments to maximize power and performance (optional).

FLOATING TRANSVERSE TILT WITH DAMPER

Alternatively, hydraulic adjustment (optional) with possibility of floating movement.

SPRAY SYSTEM WITH TANK BUILT INTO FRAME

Includes electro-pump, filter and sprayers (tank also available for positioning on base machine). Controls dust produced during milling operations.



SIMEX
• patent •

HYDRAULIC SIDE SHIFT

(mechanical for PL 25.10, PL 35.15 and PL 40.15). Used in central or lateral position, to the right side for milling flush to the wall.

MILLED MATERIAL REMAINS IN THE WORK AREA

No accidental launch of material since slides are in perfect adherence to work surface.

DRUMS IN DIFFERENT WIDTHS AND TEETH LAYOUT FOR ASPHALT OR CONCRETE

Multi-teeth drum for fine surface milling. Millimetric precision thanks to the self-levelling system that maintains constant working depth. Ideal for removal of road surface marking, for creating rumble strips or surface roughness



The lateral slides always rest on the ground and the working depth **P** is fixed and constant during advancement. The working depth can be varied only by changing the travel **C** of the depth adjuster.



RANGE

PL

SELF-LEVELLING **STABILIZERS**

PL 60.25

PL 100.25

- Constant depth
- Excellent mixing
- Maximum safety
- Stability and no vibrations
- Optimal visibility for the operator

PL 60.25
PL 100.25



Simex PL self-levelling road stabilizers are designed to perform ground stabilization and consolidation. Excellent for consolidating sub-layers and ideal for mixing material with lime or cement. Work at a profound depth (250mm).

Thanks to the exclusive self-levelling system, milling depth is constant in any condition. Stabilizers feature transverse tilt, side shift, and independent RH-LH depth adjustment.

SIMEX **PERFORMER**
• patent •

ADVANTAGES

- Constant depth
- Excellent mixing
- Maximum safety
- Stability and no vibrations
- Optimal visibility for the operator

TECHNICAL DATA		PL 60.25	PL 100.25
Standard drum			
Width	mm inch	600 24	1000 40
Depth	mm inch	0 - 250 0 - 10	0 - 220 0 - 8,5
Special drums			
Max. depth	mm inch	-	250 10
Depth adjustment		independent RH/LH, mechanical - hydraulic (optional)	
Side shift		hydraulic	hydraulic
Transverse tilt		Autom/Hyd.*	Autom/Hyd.*
Tilt		16°	16°
Weight standard version (1)	kg lbs	1200 2640	1650 3630
Required oil flow	l/min gpm	110 - 170 29 - 45	120 - 190 32 - 50
Max. oil pressure	BAR psi	310 4500	310 4500

(1) User is responsible for ensuring that the characteristics of the prime mover suit the weight and specifications of the attachment.

(*) On request

Simex does not accept responsibility or liability for the information provided. Technical modifications may vary without prior notice.



- Utilities
- Quarries and mines
- Demolition
- Port and underwater works
- Construction and building
- Infrastructure
- Tunneling
- Agriculture and forestry
- Recycling
- Roadworks
- Trenching
- Mini-excavator
- Excavator
- Skid steer loader
- Front loader
- Backhoe



RANGE

PLC

SELF-LEVELLING
**ROAD
PLANERS**
WITH CONVEYOR BELT

PLC 18 HP

PLC 24

PLC 30

PLC 40

- Clean trench
- Constant planing depth
- Perfect surfaces with side-by-side passes
- Max. safety
- Stability and no vibrations
- Excellent visibility for the operator

SELF-LEVELLING ROAD PLANERS WITH CONVEYOR BELT

PLC 18 HP
PLC 24
PLC 30
PLC 40



Simex PLC self-levelling planers clean the milled trench and deposit the dug material to the right or left. Thanks to the self-leveling system, planing depth is constant in any condition.

They are indispensable for optimizing collection of milled material for reuse on site or for transporting away.

Can be installed with spray system for dust control.

SIMEX **PERFORMER**
• patent •

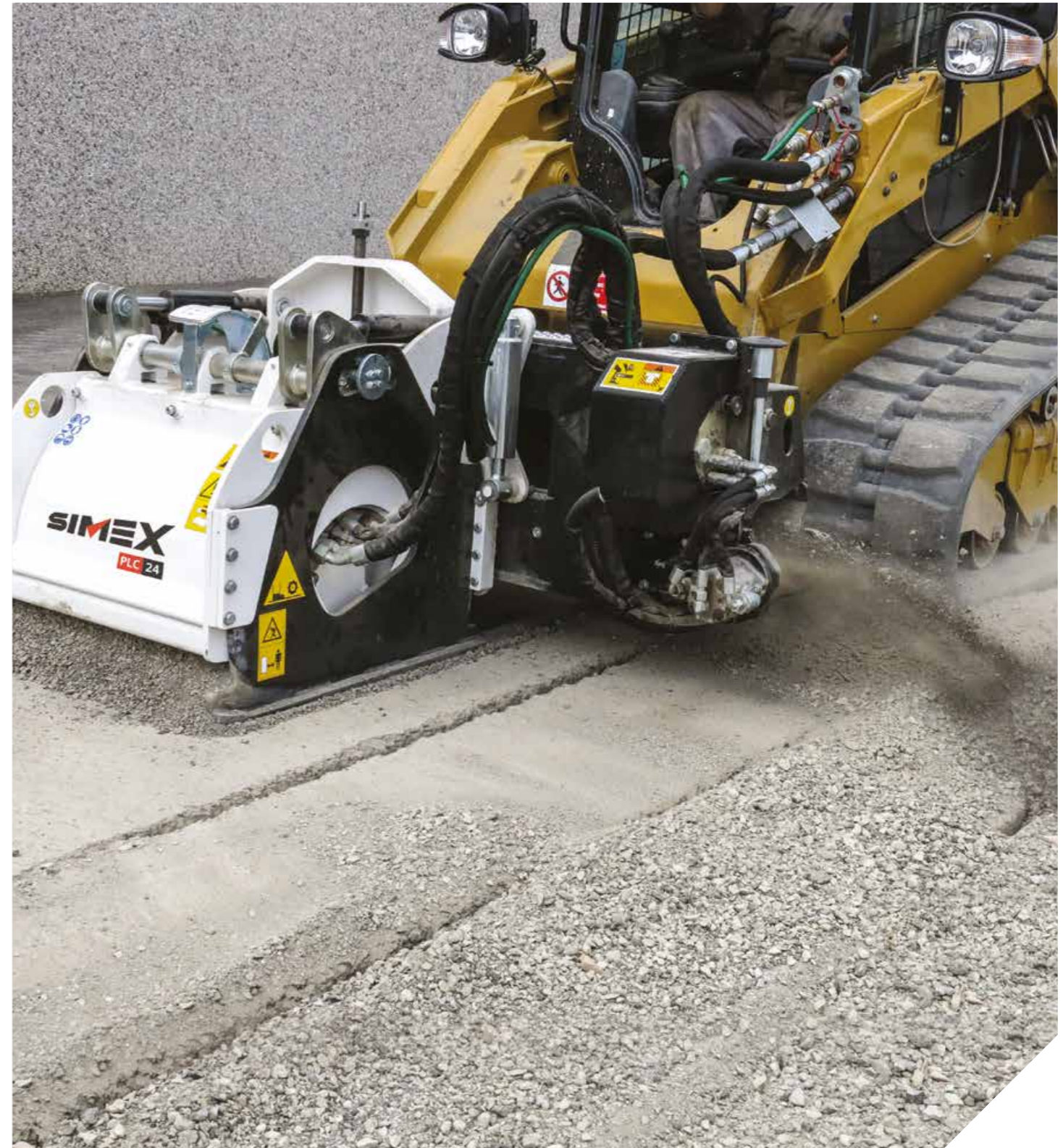


ADVANTAGES

- Clean trench
- Constant planing depth
- Perfect surfaces with side-by-side passes
- Max. safety
- Stability and no vibrations
- Excellent visibility for the operator

TECHNICAL DATA		PLC 18 HP	PLC 24	PLC 30	PLC 40
Standard drum width	mm inch	450 18	600 24	750 30	1000 40
Max. depth	mm inch	170 7	170 7	170 7	130 5
Depth adjustment		Independent RH-LH, mechanical – hydraulic optional			
Side shift		Hydraulic			
Transverse tilt		Automatic			
Tilt		16°			
Operating weight (1)	kg lbs	1020 2245	1100 2400	1200 2650	1360 3000
Required oil flow	l/min gpm	100 - 150 27 - 40	100 - 150 27 - 40	110 - 170 29 - 45	110 - 190 29 - 50
Max. oil pressure	BAR psi	310 4500	310 4500	310 4500	310 4500

(1) User is responsible for ensuring that the characteristics of the prime mover suit the weight and specifications of the attachment.
Simex does not accept responsibility or liability for the information provided. Technical modifications may vary without prior notice.



- Utilities
- Quarries and mines
- Demolition
- Port and underwater works
- Construction and building
- Infrastructure
- Tunneling
- Agriculture and forestry
- Recycling
- Roadworks
- Trenching
- Mini-excavator
- Excavator
- Skid steer loader
- Front loader
- Backhoe



SIMEX
HEAVY MADE EASY

RANGE

PL

PLANERS

FOR SPECIAL
APPLICATIONS

PL RAIL

PL SG

PLANERS FOR SPECIAL APPLICATIONS

Simex consistently meets users' demands, delivering them the best solutions to solve even the most complex application challenges. The planers for working under guard rails and planers for rail tracks are further proof of this commitment.



PL SG

Intended for mounting on front loaders and skid steer loaders. Designed to remove layers of asphalt or concrete under the guard rail. Adjustable milling depth. Conveyor belt version available for removing material from trench. Interchangeable milling drums in different widths available on request.

TECHNICAL DATA

TECHNICAL DATA		PL SG
Standard drum width	mm inch	350 14
Depth	mm inch	0 - 150 0 - 6
Depth adjustment		- Mechanical/hydraulic optional
Side shift		Hydraulic
Operating weight (1)	kg lbs	715 1570
Operating weight with conveyor belt (*) (1)	kg lbs	910 2000
Required oil flow	l/min gpm	75 - 140 18 - 38
Max. required oil pressure	BAR psi	310 4500

(1) User is responsible for ensuring that the characteristics of the prime mover suit the weight and specifications of the attachment. Simex does not accept responsibility or liability for the information provided. Technical modifications may vary without prior notice.



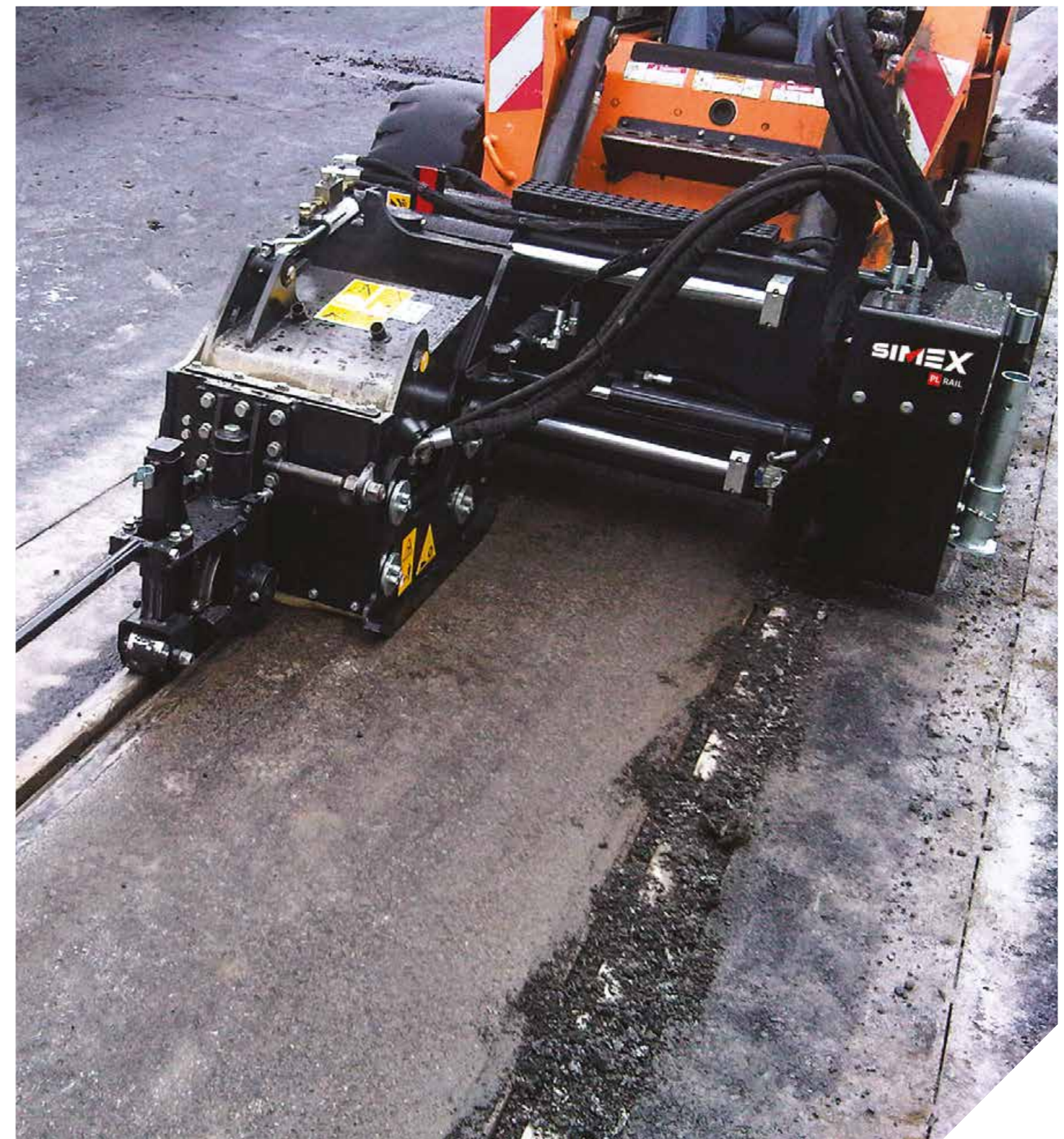
PL RAIL

Studied for creating one or two small trenches at sides of rail tracks to be filled later with sound-insulating material. Fitted with two guide wheels positioned at front and rear of milling disks that run on the rail to guarantee maximum precision. Wheels available in different forms and sections for different rail profiles. Interchangeable milling disks in different widths available on request.

TECHNICAL DATA

TECHNICAL DATA		PL RAIL
Disk width	mm inch	30 - 40 - 50 - 60 1,2 - 1,6 - 2 - 2,4
Depth	mm inch	0 - 70 0 - 2,75
Depth adjustment		
Side shift		Hydraulic
Tilt		
Operating weight (1)	kg lbs	1015 2235
Required oil flow	l/min gpm	75 - 115 20 - 30
Max. required oil pressure	BAR psi	310 4500

(1) User is responsible for ensuring that the characteristics of the prime mover suit the weight and specifications of the attachment. Simex does not accept responsibility or liability for the information provided. Technical modifications may vary without prior notice.



PL RAIL
PL SG

Utilities

Quarries and mines

Demolition

Port and underwater works

Construction and building

Infrastructure

Tunneling

Agriculture and forestry

Recycling

Roadworks

Trenching

Mini-excavator

Excavator

Skid steer loader

Front loader

Backhoe



SIMEX
HEAVY MADE EASY

RANGE

RS

PLANERS FOR RUMBLE STRIPS

RS 16

- Ideal for creation of rumble strips
- Working precision
- No vibrations
- Easily converts into a road planer

PLANERS FOR RUMBLE STRIPS

RS 16



Planer for creation of rumble strips



Standard self-leveling planer



Planer for removal of road markings and surface finishing (multi-tooth)

Simex RS planers are designed to create rumble strips (lines milled into the pavement to produce noise and vibration as a safety measure).

Can mill strips in different sizes and/or modify the distance between the strips according to client requirements or local regulations.

Size and spacing are constant and independent from the advancement speed. The oscillating motion is transmitted to the milling unit only.

No vibrations (no wear) are transmitted to the loader boom or the operator.

Convertible (Simex patent) into:

- Standard planer with Simex self-levelling system ;
- Surface planer for removal of road markings or surface finishing;
- Milling drums in different sizes are available on request.



ADVANTAGES

- Ideal for creation of rumble strips
- Working precision
- No vibrations
- Easily convert into road planers



TECHNICAL DATA

		RS 16 PLANER FOR RUMBLE STRIPS	RS 16 PLANER FOR CONTINUOUS CUTTING
Drum width	mm inch		300 - 350 - 400 12 - 14 - 16
Depth	mm inch		0 - 150 0 - 6
Drum width for surface finishing (*)	mm inch		350 14
Drum depth for surface finishing (*)	mm inch		0 - 25 0 - 1
Rumble strip width (1)	mm inch	300 - 350 - 400 12 - 14 - 16	
Rumble strip depth (1)	mm inch	0 - 25 0 - 1	
Distance between strips (1)	mm inch	300 12	
Rumble strip length (1)	mm inch	178 7	
Depth adjustment		-	Manual
Side shift		Hydraulic	Hydraulic
Transverse tilt		Automatic	Automatic
Tilt		16°	16°
Operating weight (2)	kg lbs	1040 2300	830 1830
Operating weight with integrated spray system (2)	kg lbs	1200 2640	990 2200
Required oil flow	l/min gpm	75 - 140 20 - 37	90 - 140 24 - 37
Max. oil pressure	BAR psi	250 3625	250 3625

(1) Standard dimensions - custom dimensions on request.

(2) User is responsible for ensuring that the characteristics of the prime mover suit the weight and specifications of the attachment(*) Optional Simex does not accept responsibility or liability for the information provided. Technical modifications may vary without prior notice.

- Utilities
- Quarries and mines
- Demolition
- Port and underwater works
- Construction and building
- Infrastructure
- Tunneling
- Agriculture and forestry
- Recycling
- Roadworks
- Trenching
- Mini-excavator
- Excavator
- Skid steer loader
- Front loader
- Backhoe



SIMEX
HEAVY MADE EASY

RANGE

RW/RWA/RWS

SELF-LEVELLING
**WHEEL
SAWS**

RW 150

RW 350

RWS 400

RW 500

RWA 500

- Clean trench
- Constant trench depth
- Max. safety
- Excellent visibility for operator
- High cutting force
- Stability and no vibrations

SELF-LEVELLING WHEEL SAWS

- RW 150
- RW 350
- RWS 400
- RW 500
- RWA 500



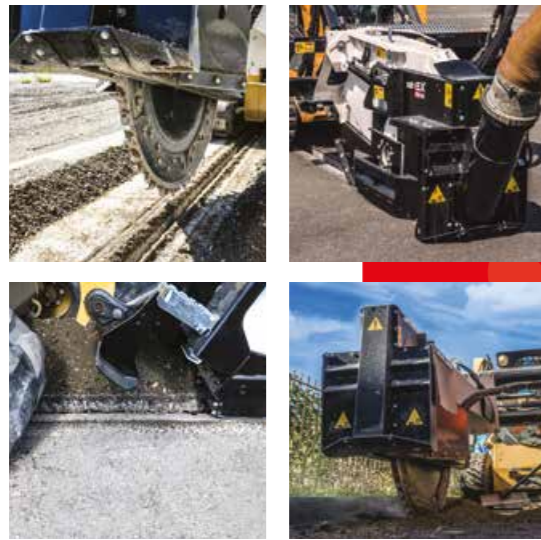
Designed for skid steer mounting, Simex RW and RWA wheel saws provide different solutions for working on hard or compact surfaces such as asphalt, concrete and rock: cutting and narrow trenches, set-section trenches, mini- and micro-trenches for fiber optic cable installation. Full protection of the wheel at any working depth guarantees maximum safety of persons and property.

Self-leveling feature ensures constant trench depth and allows operator excellent visibility in any condition.

SIMEX **PERFORMER**
• patent •



- Utilities
- Quarries and mines
- Demolition
- Port and underwater works
- Construction and building
- Infrastructure
- Tunneling
- Agriculture and forestry
- Recycling
- Roadworks
- Trenching
- Mini-excavator
- Excavator
- Skid steer loader
- Front loader
- Backhoe



ADVANTAGES

- Clean trench
- Constant trench depth
- Max. safety
- Excellent visibility for operator
- High cutting force
- Stability and no vibrations

TECHNICAL DATA		RW 150	RW 350	RWS 400	RW 500	RWA 500
Trench width	mm inch	25 - 30 - 40 - 50 1 - 1,2 - 1,6 - 2	25 - 30 - 40 - 50 - 80 1 - 1,2 - 1,6 - 2 - 3,2	50 - 80 - 100 - 120 2 - 3,2 - 4 - 5	50 - 80 - 100 - 120 2 - 3,2 - 4 - 5	50 - 80 - 100 - 120 2 - 3,2 - 4 - 5
Trench depth	mm inch	100 - 125 - 150 4 - 5 - 6	250 - 300 - 350 10 - 12 - 14	250 - 400 10 - 16	250 - 500 10 - 20	250 - 500 10 - 20
Depth adjustment		Mechanical manual		Hydraulic		
Side shift		Mechanical	Hydraulic	Hydraulic		
Operating weight (1)	kg lbs	225 (2) - 240 (3) 450 (2) - 530 (3)	940 (2) - 1030 (4) 2072 (2) - 2250 (4)	1100 2420	1275 - 1340 2800 - 2950	1300 - 1400 2860 - 3080
Required oil flow	l/min gpm	30 - 65 8 - 17	90 - 150 24 - 39	90 - 160 24 - 43	100 - 160 27 - 43	100 - 160 27 - 43
Max. oil pressure	BAR psi	250 3625	250 3625	300 4350	300 4350	300 4350
Lateral tilt		-	-	●	-	●
Conveyor belt		-	-	□	□	□
Vacuum device		-	-	□	□	□
Steering system		-	-	●	-	-

● Standard □ On request

(1) User is responsible for ensuring that the characteristics of the prime mover suit the weight and specifications of the attachment
 (2) With a 25 mm wheel saw width.
 (3) With a 80 mm wheel saw width.
 (4) With a 80 mm wheel saw width.
 Simex does not accept responsibility or liability for the information provided. Technical modifications may vary without prior notice.



RW 150
RW 350
RWS 400
RW 500
RWA 500

Utilities

Quarries and mines

Demolition

Port and underwater works

Construction and building

Infrastructure

Tunneling

Agriculture and forestry

Recycling

Roadworks

Trenching

Mini-excavator

Excavator

Skid steer loader

Front loader

Backhoe

SIMEX
• patent •

SELF-LEVELLING SYSTEM FOR CONSTANT TRENCHING DEPTH.

The self-levelling system (Simex patent) guarantees constant trenching depth in any condition, regardless of the ground contour and the position of the attachment with respect to the prime mover.



SIMEX
• patent •

RWS VERSION

The innovative RWS can create curved trenches with radii down to 5 m. The special steering unit acts on the axis of the wheel saw to go right and left.



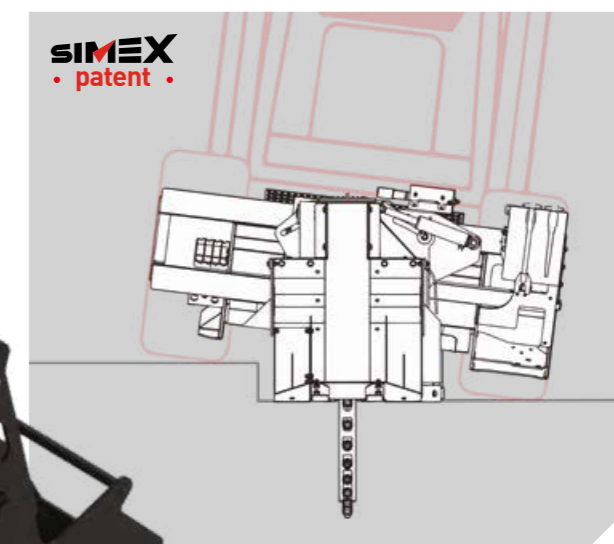
HYDRAULIC DEPTH ADJUSTMENT

THE PERFORMANCE OPTIMIZER

Informs the operator how to work with Simex attachments to maximize power and performance. (Optional)

HYDRAULIC LATERAL TILT

Maintains the wheel saw vertical in any condition. Allows milling near sidewalks with the wheel saw in vertical position even when the prime mover is not parallel to the road surface, compensating for a difference in level up to 200mm.



SUCTION



• By replacing the front section and closing the outlets the excavated material can be aspirated with the aid of a vacuum truck (Optional).

CONVEYOR BELT



• To convey the excavated material to a height that allows it to be loaded into the bucket of a second machine.



WATER SPRAY

For dust control. (Optional)

SEGMENTED WHEEL

Disk with removable, interchangeable segments allows quick variation of the trench width while maintaining the same base wheel.

HYDRAULIC SIDE SHIFT

SIDE DISCHARGE OF MATERIAL

Special design of outlets allows trench to be cleared efficiently at the depth programmed. Material is discharged to right or left, or totally to the LH side by closing the RH outlet (useful for roadside trenching).



SIMEX
HEAVY MADE EASY

RANGE

T/TA

WHEEL SAWS

FOR SET-SECTION TRENCHES

T 200

T 300

TA 300

T 450

T 600

T 800

- Clean trench
- Max. safety
- High performance
- High cutting force

WHEEL SAWS FOR SET-SECTION TRENCHES

T 200
T 300
TA 300
T 450
T 600
T 800



Intended for skid steer mounting, Simex wheel saws offer different solutions for working on hard or compact surfaces, including asphalt, concrete and rock: cuts and small trenches, set-section trenches, mini- and micro-trenches for fiber optic cable installation.

Full wheel protection at any working depth ensures maximum safety of persons and properties.

SIMEX **PERFORMER**
• patent •



ADVANTAGES

- Clean trench
- Max. safety
- High performance
- High cutting force

TECHNICAL DATA		T 200	T 300	TA 300
Trench width	mm inch	25 - 30 - 40 - 50 1 - 1,2 - 1,6 - 2	25 - 30 - 50 - 80 1 - 1,2 - 1,6 - 3,2	25 - 30 - 50 - 80 1 - 1,2 - 1,6 - 3,2
Trench depth	mm inch	200 8	300 12	300 12
Depth adjustments		-	-	-
Side shift		Mechanical	Hydraulic	Hydraulic
Trench clearing device		-	<input type="checkbox"/>	<input type="checkbox"/>
Conveyor belt		-	-	<input type="checkbox"/>
Lateral tilt		-	-	●
Segmented wheel		-	-	-
Vacuum device		-	<input type="checkbox"/>	<input type="checkbox"/>
Operating weight with standard wheel (1)	kg lbs	270 600	665 1460	845 1860
Required oil flow	l/min gpm	35 - 75 9 - 20	60 - 115 16 - 30	60 - 115 16 - 30
Max. oil pressure	BAR psi	250 3625	300 4350	300 4350

● Standard On request

1) User is responsible for ensuring that the characteristics of the prime mover suit the weight and specifications of the attachment. Simex does not accept responsibility or liability for the information provided. Technical modifications may vary without prior notice.



T 800: Works reverse



TECHNICAL DATA		T 450	T 600	T 800
Trench width	mm inch	50 - 80 - 100 - 130 - 160 - 200 1,6 - 3,2 - 4 - 5 - 6,3 - 8	80 - 100 - 130 - 160 - 200 3,2 - 4 - 5 - 6,3 - 8	250 10
Trench depth	mm inch	150 - 450 6 - 17	200 - 600 8 - 24	450 - 800 17 - 31
Depth adjustments		Hydraulic	Hydraulic	Hydraulic
Side shift		Hydraulic	Hydraulic	Hydraulic
Trench clearing device		<input type="checkbox"/>	<input type="checkbox"/>	-
Conveyor belt		<input type="checkbox"/>	-	-
TILT - Lateral tilt		-	-	-
Segmented wheel		<input type="checkbox"/> (T 450S)	<input type="checkbox"/> (T 600S)	-
Vacuum device		<input type="checkbox"/>	<input type="checkbox"/>	-
Operating weight with standard wheel (1)	kg lbs	1115 2450	1340 2950	1430 3150
Required oil flow	l/min gpm	100 - 160 27 - 42	110 - 170 29 - 45	110 - 170 29 - 45
Max. oil pressure	BAR psi	300 4350	300 4350	300 4350

● Standard On request

1) User is responsible for ensuring that the equipment meets the excavator's specifications and weight requirements. Simex does not accept responsibility or liability for the information provided. Technical modifications may vary without prior notice.

- Utilities
- Quarries and mines
- Demolition
- Port and underwater works
- Construction and building
- Infrastructure
- Tunneling
- Agriculture and forestry
- Recycling
- Roadworks
- Trenching
- Mini-excavator
- Excavator
- Skid steer loader
- Front loader
- Backhoe

- T 200
- T 300
- TA 300
- T 450
- T 600
- T 800

- Utilities
- Quarries and mines
- Demolition
- Port and underwater works
- Construction and building
- Infrastructure
- Tunneling
- Agriculture and forestry
- Recycling
- Roadworks
- Trenching

- Mini-excavator
- Excavator
- Skid steer loader
- Front loader
- Backhoe

CONVEYOR BELT



CONVEYOR BELT
Conveys the excavated material to a height that allows it to be loaded into the bucket of a second machine.
(Optional on TA 300 and T 450)

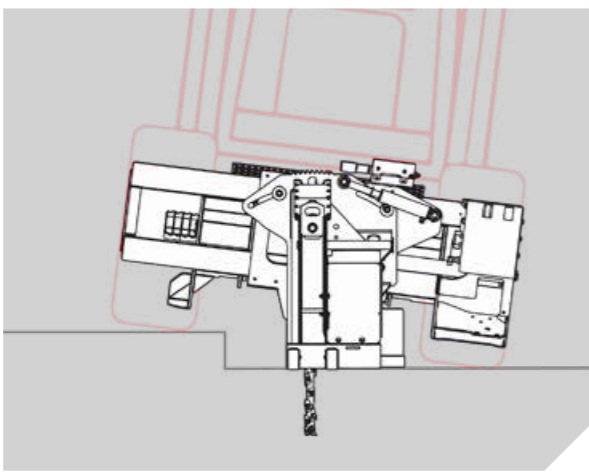
ASPIRATION



ASPIRATION
By replacing the front section and closing the outlets, the excavated material can be aspirated with the aid of a vacuum truck.
(Optional)

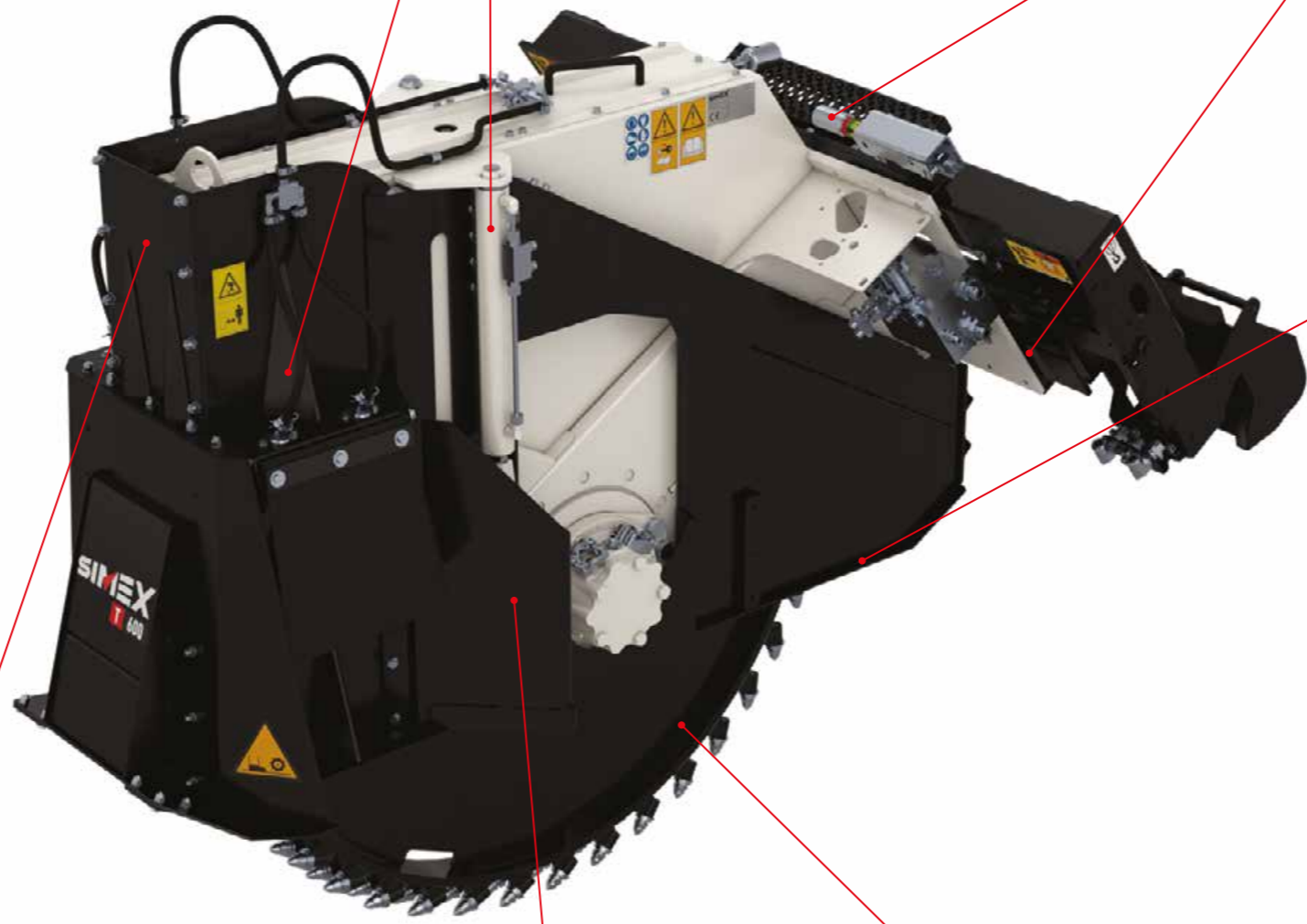
TA 300

Hydraulic lateral tilt: maintains the wheel saw vertical in any condition, even when the prime mover is not parallel to the road surface.



HYDRAULIC DEPTH ADJUSTMENT

WATER SPRAY
for dust control. (Optional)



SIDE DISCHARGE OF MATERIAL
Special design of outlets allows trench to be cleared efficiently at the depth programmed. Material is discharged to right or left, or totally to the LH side by closing the RH outlet (useful for roadside trenching). (except T800)

PERFORMER : THE PERFORMANCE OPTIMIZER

Informs the operator how to work with Simex attachments to maximize power and performance
(Optional)

HYDRAULIC SIDE SHIFT

SCRAPERS: TRENCH CLEARING DEVICE

The trench clearing device is a blade that is hydraulically activated to enter the trench during work. Improves emptying and guarantees a clean trench (not for T 800). (Optional)

T 800

Compared to the other models of the T range, the T 800 is fitted with an integrated motor in the wheel that enters the trench and goes down to a depth of 800mm without excessively increasing the wheel diameter. The T 800 is also the only one that works reverse.



SEGMENTED WHEEL

Disk with removable, interchangeable segments allows quick variation of the trench width while maintaining the same base wheel.
(not for T 800)



SIMEX
HEAVY MADE EASY

RANGE

ST

ASPHALT FLOAT

ST 200

- Simple to use
- Easy to clean
- Lightweight for transport
- Reduces working times
- Clean result, safe working

ASPHALT FLOAT

ST 200



ST asphalt floats are designed to lay asphalt or waste material to fill set-section trenches, create sidewalks or widen existing roadways. The lateral slides take the existing surface as reference, whereas the thickness of the laid asphalt can be adjusted. The floating transverse tilt can be locked in case a slide doesn't touch the ground. They can lay asphalt on sidewalks or widen the road surface without the prime mover passing over the spread material since they can work totally offset the machine.



ADVANTAGES

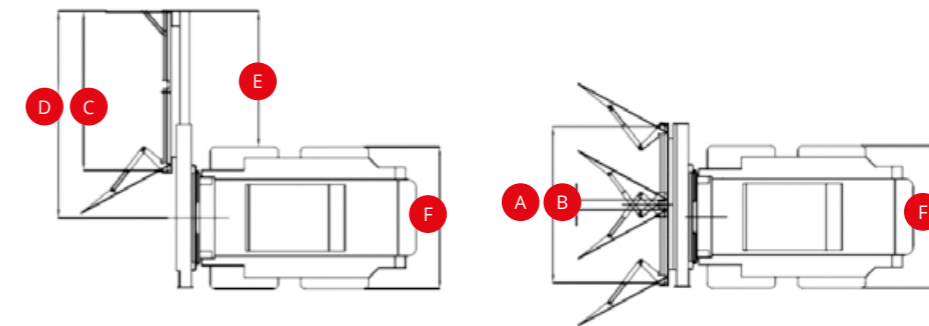
- Simple to use
- Easy to clean
- Lightweight for transport
- Reduces working times
- Clean result, safe working



TECHNICAL DATA		ST 200
Asphalt laying width regulation		Hydraulic
Asphalt thickness regulation (independent RH-LH)		Mechanical
Asphalt thickness	mm inch	0 - 100 0 - 4
Transverse tilt		5°
Tilt locking device		si
Side shift		Hydraulic
Average working speed	m/min feet/min	50 - 120 170 - 400
Operating weight (1)	kg lbs	675 1485
Required oil flow	l/min gpm	45 12
Oil pressure	BAR psi	200 2900

(1) User is responsible for ensuring that the characteristics of the prime mover suit the weight and specifications of the attachment
(* Optional)

Simex does not accept responsibility or liability for the information provided. Technical modifications may vary without prior notice.



REF.	ST 200
A	mm inch
B	mm inch
C	mm inch
D	mm inch
E	mm inch
F	mm inch



SIMEX
HEAVY MADE EASY

RANGE

CB

CRUSHER BUCKETS

CB 900

CB 1200

CB 1500

CB 2000

CB 2500

- Low noise output
- High cutting force
- High productivity
- Lightweight frame
- No vibrations
- Quick teeth replacement
- Safe coupling and decoupling
- Replaceable blades interchangeable for spoil piece size change

CRUSHER BUCKETS

CB 900
CB 1200
CB 1500
CB 2000
CB 2500



Designed to reduce the volume of aggregates and reinforced concrete directly on site, CB crusher buckets with rotor system give optimal performance when working with iron, rock, soil and deformable parts, and wet or humid materials. The exceptional cutting force allows any material to be crushed thanks to the rotor with teeth activated by high-displacement radial piston hydraulic motors in direct drive. Automatic system inverts rotation of the drum in case of blocking (Simex patent).

Mounting bracket for attachment to prime mover is height-adjustable to ensure that when the skid steer loader is in a resting position with arms lowered, the bucket is close to the ground, essential for guaranteeing cabin opening and that coupling and decoupling are carried out in safety.



ADVANTAGES

- Low noise output
- High cutting force
- High productivity
- Lightweight frame
- No vibrations
- Quick teeth replacement
- Safe coupling and decoupling
- Replaceable blades interchangeable for spoil piece size change



- Utilities
- Quarries and mines
- Demolition
- Port and underwater works
- Construction and building
- Infrastructure
- Tunneling
- Agriculture and forestry
- Recycling
- Roadworks
- Trenching
- Mini-excavator
- Excavator
- Skid steer loader
- Front loader
- Backhoe

TECHNICAL DATA		CB 900	CB 1200	CB 1500	CB 2000	CB 2500
Width	mm	1400	1500	1700	1900	2100
	inch	55	60	67	75	83
Bucket capacity (SAE)	m ³	0,30	0,45	0,55	0,75	0,90
	y ³	0,40	0,60	0,70	1,0	1,17
Rotor width	mm	700	840	965	1100	850
	inch	27	33	38	43	33
Number of teeth	n°	5	6	7	8	8
Operating weight empty	kg	570	760	950	1150	1620
	lbs	1250	1670	2090	2530	3560
Operating weight at full load (1)	kg	900	1200	1500	2000	2600
	lbs	1980	2640	3300	4400	5700
Required oil flow	l/min	40 - 80	70 - 150	70 - 150	70 - 150	120 - 300
	gpm	11 - 21	18 - 40	18 - 40	18 - 40	32 - 79
Max. required oil pressure	BAR	300	350	350	350	350
	psi	4350	5075	5075	5075	5075

(1) User is responsible for ensuring that the characteristics of the prime mover suit the weight and specifications of the attachment. Simex does not accept responsibility or liability for the information provided. Technical modifications may vary without prior notice.

REF.	CB 900	CB 1200	CB 1500	CB 2000	CB 2500
mm inch	0 - 30 0 - 1,2	■			
mm inch	0 - 40 0 - 1,6		■	■	■
mm inch	0 - 50 0 - 2,0	■	■	■	■
mm inch	0 - 70 0 - 2,7	○	○	○	○
mm inch	0 - 100 0 - 2,8		■	■	■

○ Standard
■ On request





SIMEX
HEAVY MADE EASY

RANGE
CHD

CHAIN TRENCHERS

CHD 90S CHD 90 CHD 120 CHD 150

- Clean trench
- Maximum stability at any depth

CHAIN TRENCHERS

CHD 90S
CHD 90
CHD 120
CHD 150



CHD Chain Trenchers are designed for set-section trenching on soft soils.

The discharge screw on the righthand side and the trench clearing device makes sure the trench is kept clean, while the slide provides maximum stability at any trenching depth.

Chain is available with hoe blades for soft soils or hoe blades with teeth for mixed soils.

SIMEX **PERFORMER**
• patent •



ADVANTAGES

- Clean trench
- Maximum stability at any depth

TECHNICAL DATA	CHD 90S	CHD 90	CHD 120	CHD 150
Max. trench depth	900 35	900 35	1200 47	1500 59
Trench width - standard	150 6	150 6	150 6	150 6
Trench width - optional	100 - 200 4 - 8	200 - 250 8 - 10	200 - 250 8 - 10	200 8
Side shift	standard	standard - hydraulic (optional)		
Scraper	mechanical spring-operated	mechanical spring-operated		
Operating weight (1)	260 570	715 1575	780 1715	830 1830
Required oil flow	35 - 95 9 - 25	60 - 120 16 - 32	70 - 140 18 - 37	90 - 160 24 - 42
Max. oil pressure	240 3500	250 3625	250 3625	250 3625

(1) User is responsible for ensuring that the characteristics of the prime mover suit the weight and specifications of the attachment. Simex does not accept responsibility or liability for the information provided. Technical modifications may vary without prior notice



- Utilities
- Quarries and mines
- Demolition
- Port and underwater works
- Construction and building
- Infrastructure
- Tunneling
- Agriculture and forestry
- Recycling
- Roadworks
- Trenching
- Mini-excavator
- Excavator
- Skid steer loader
- Front loader
- Backhoe



SIMEX
HEAVY MADE EASY

RANGE

CT

VIBRATING WHEEL COMPACTORS

CT 2.8 BASE CT 2.8 F.O.

- Extremely precise and versatile
- Maximum operator comfort
- Result: solid, even and well compacted trench bottom

VIBRATING WHEEL COMPACTORS

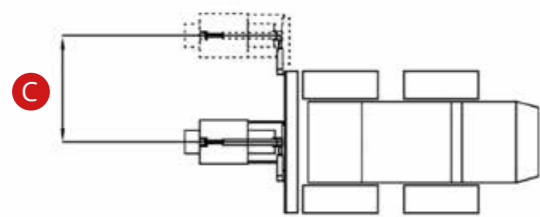
CT 2.8 BASE
CT 2.8 F.O.



Designed for compacting trench bottoms, Simex CT vibrating wheel compactors guarantee a permanently solid, even and well compacted bottom that ensures maximum road safety.

Perfect insulation from prime mover. Thanks to the reverse-rotation vibrating twin shaft positioned at center of the wheel, vertical forces are added up and horizontal forces are countered for increased operator comfort.

Wheel width can be adjusted via bolted sectors that are easily changed on site. Possibility to mount the rotation allows compaction in any position, even in the most difficult-to-reach areas.

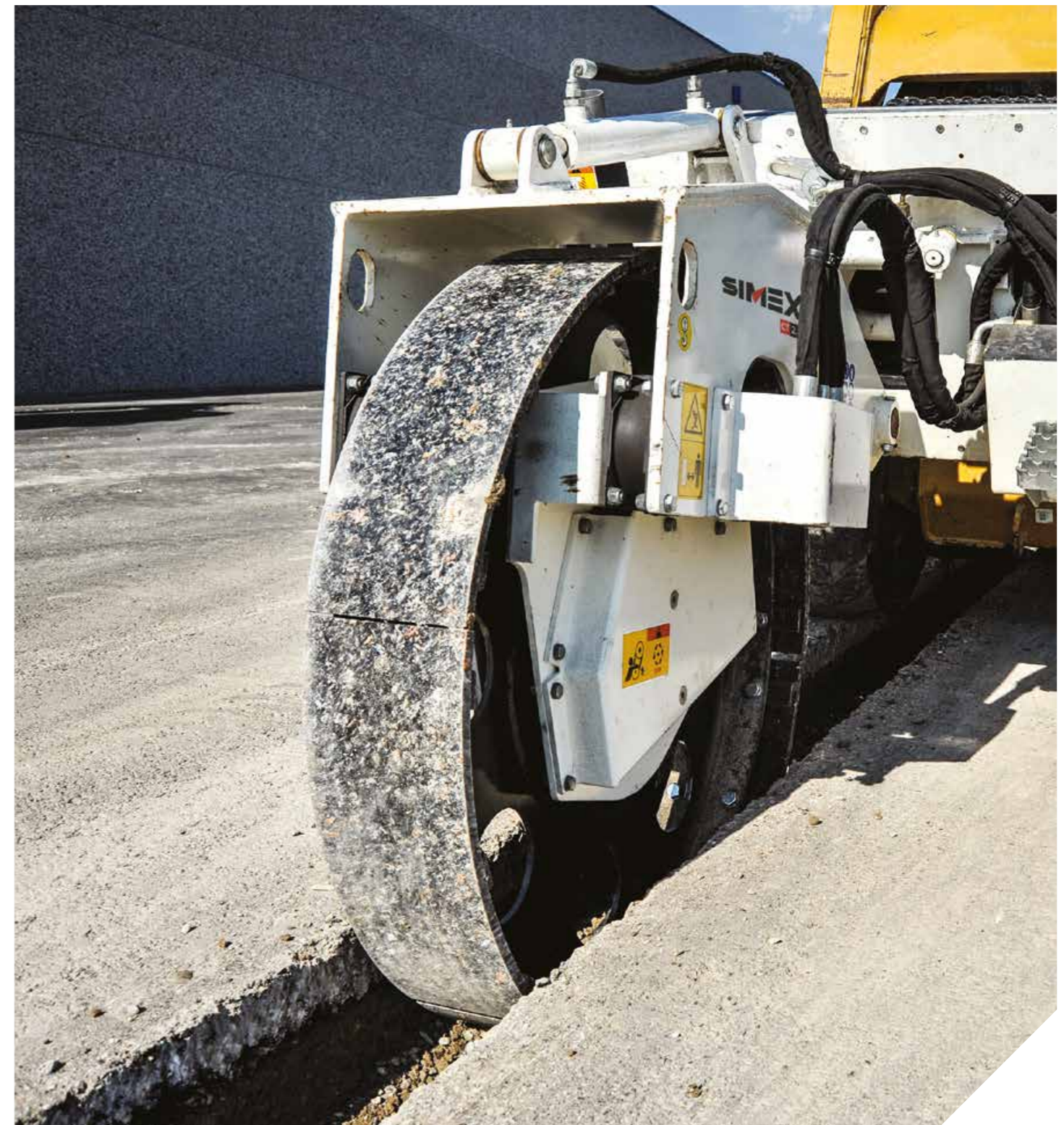


ADVANTAGES

- Extremely precise and versatile
- Maximum operator comfort
- Result: solid, even and well compacted trench bottom

TECHNICAL DATA		CT 2.8 BASE	CT 2.8 F.O.
Standard wheel			
Width of bolted sectors	mm inch	150 - 200 - 250 - 350 - 400 6 - 8 - 10 - 12 - 14 - 16	150 - 200 - 250 - 350 - 400 6 - 8 - 10 - 12 - 14 - 16
Working depth	mm inch	0 - 700 0 - 27	0 - 700 0 - 27
Special wheels			
Wheel width	mm inch	50 - 100 2 - 4	50 - 100 2 - 4
Working depth	Kg inch	0 - 350 0 - 14	0 - 350 0 - 14
Vibration frequency	Hz	30 - 40	30 - 40
Hydraulic side shift (C)	mm inch	-	1100 43
Hydraulic transversal tilt		-	18°
Max. vertical force	kN lbf	42 9400	42 9400
Operating weight (1)	kg lbs	720 - 770 1500 - 1700	820 - 970 2020 - 2150
Required oil flow	l/min gpm	40 - 50 11 - 13	50 - 70 13 - 18
Max. oil pressure	BAR psi	220 3200	220 3200

(1) User is responsible for ensuring that the characteristics of the prime mover suit the weight and specifications of the attachment. Simex does not accept responsibility or liability for the information provided. Technical modifications may vary without prior notice.

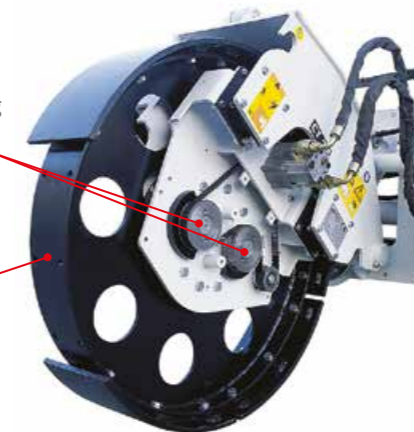


Counter-rotating vibrating double shaft

positioned at center of wheel

Easily replaceable segments

for quick adjustment of compaction wheel width



- Utilities
- Quarries and mines
- Demolition
- Port and underwater works
- Construction and building
- Infrastructure
- Tunneling
- Agriculture and forestry
- Recycling
- Roadworks
- Trenching

- Mini-excavator
- Excavator
- Skid steer loader
- Front loader
- Backhoe



SIMEX
HEAVY MADE EASY

RANGE

BC

BEACH CLEANER

BC 200

- Efficient working with wet or dry sand and soil
- Large-sized hopper

BEACH CLEANER

BC 200



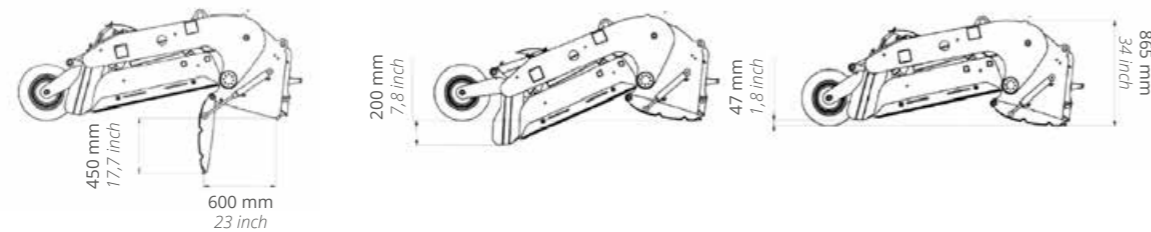
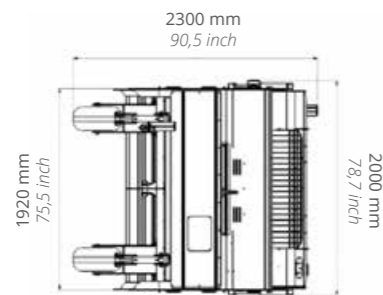
Simex BC Beach Cleaners are ideal for sifting wet or dry sand to remove fine debris and cigarette butts.

The debris is easily collected and discharged thanks to the high capacity hopper and hydraulic discharge activated from the cabin.



ADVANTAGES

- Efficient working with wet or dry sand and soil
- Large-sized hopper



TECHNICAL DATA

BC 200

Hopper capacity	l y3	350 0,45
Weight (1)	kg lbs	690 1515
Max. oil pressure	BAR psi	250 3625
Required oil flow	l/min gpm	70 - 90 18 - 24
Sifting meshes – Screen size (Standard)	mm inch	15x15 0,6x0,6
Sifting meshes – Screen size (Optional)	mm inch	10x10 - 20x20 0,4x0,4 - 0,8x0,8
Working depth	mm inch	0 - 200 0 - 8

(1) User is responsible for ensuring that the characteristics of the prime mover suit the weight and specifications of the attachment. Simex does not accept responsibility or liability for the information provided. Technical modifications may vary without prior notice.



- Utilities
- Quarries and mines
- Demolition
- Port and underwater works
- Construction and building
- Infrastructure
- Tunneling
- Agriculture and forestry
- Recycling
- Roadworks
- Trenching

- Mini-excavator
- Excavator
- Skid steer loader
- Front loader
- Backhoe

simex.it



Simex Srl - Soc. Uninom. - Via Isaac Newton, 31-33
40017 San Giovanni in Persiceto (BO) - ITALY
VAT/P.IVA 00692551203 - F.C./C.F. 04034530370
☎ +39 0516810609 - 📠 +39 0516810628



Rev. 09/02/2022