

COMAC
2 Group

C2MAC Group is an Italian **multinational corporation** which offers a complete value chain for **casting** processes, machining, and **components assemblies** for hydraulics and precision mechanics **market**.



FONDERIE DI MONTORSO







CASTING & MACHINING SOLUTIONS



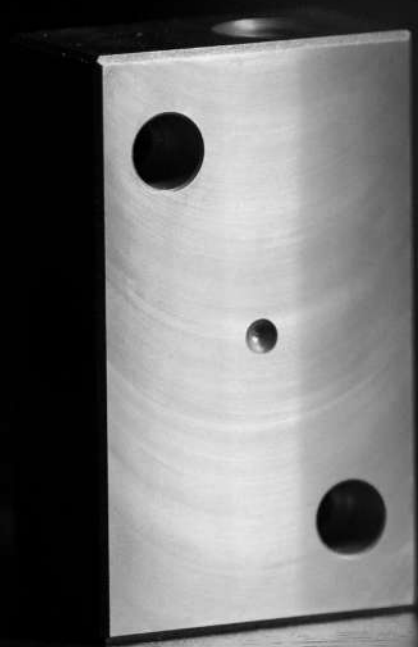
Offers an added value to a complete service, from co-design to casting process, up to the delivery of fully machined and assembled castings. From the early stage of development, we closely collaborate with our customers, offering the most suitable casting technique and guaranteeing mechanical processing that meet **specific requirements** and a highest **quality standard**.

CO-ENGINEERING

CASTING

MACHINING

ASSEMBLING



 **IS A STRATEGIC PARTNER
FOR ALL CAPITAL GOODS COMPONENTS.**

C2MAC Group combines the best foundry technologies for machining, **offering the optimal solution to meet customer's needs, therefore increasing the value chain.**

The strength of our group comes from bringing together different brands, all recognised for manufacturing excellence, as well as a team of highly specialised experts.

More than 850 passionate employees working to satisfy our customers.

Thanks to this new service, C2MAC Group provides innovative and competitive solutions for customers who increasingly choose a single supply partner for their finished mechanical components.

Our range of technologies offers solutions for complex and precision components in hydraulics, seal rings for construction machinery, automotive, agriculture, general mechanics, pumps and garmotors.



10%

**MACHINED COMPONENTS
AS PERCENTAGE
OF TURNOVER**



**200
MLN €**

TURNOVER



60%

**HYDRAULICS COMPONENTS
AS PERCENTAGE
OF TURNOVER**



9

PLANTS



+850

EMPLOYEES

45%



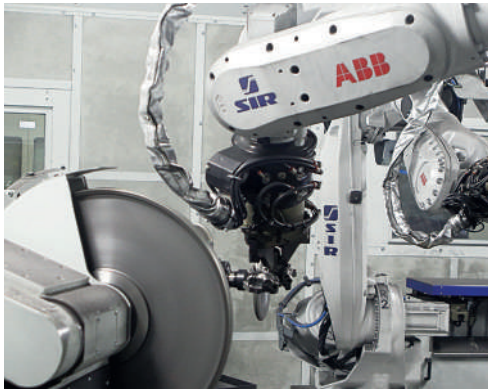
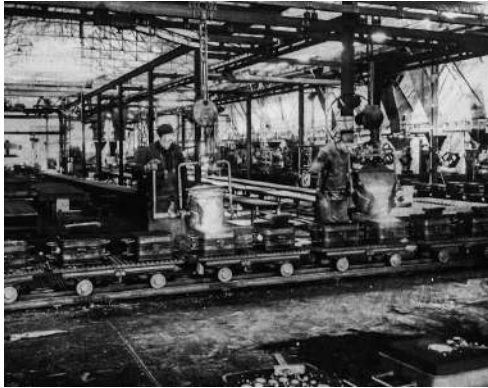
EXPORT





GREEN SAND TECHNOLOGY





FONDERIE DI MONTORSO

When heritage and experience are combined with passion for research and innovation, the result is a strategic partner committed to industrial development and to raising product and quality standards to an increasingly higher level. This is of **Fonderie di Montorso**, which, since **1962**, has been **supplying high quality grey iron casting** to different market segments.



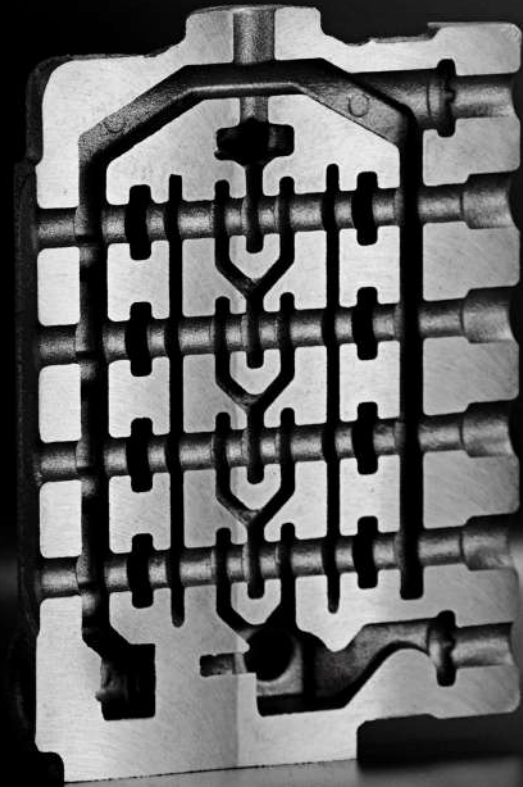
FONDERIE DI MONTORSO

CAPABILITIES

- Green sand moulding
- Production capacity: 37,000 tonnes
- Materials: grey cast iron
- Melting system with 2 cupolas and electric induction furnaces
- Disamatic vertical plant
- Horizontal Mecfond plant
- Casting weights from 0.5 kg to 130 kg
- In-house core production with robot cells
- Robotized cells for finishing hydraulic castings
- In-house painting department









Since its establishment in **1974**, Fondmatic, has focused on the fusion of grey and ductile cast iron castings and is recognised as a **leader in the production of castings for complex hydraulic systems**. The company stands out for its ability to produce and assemble in-house even the most complex form of core.

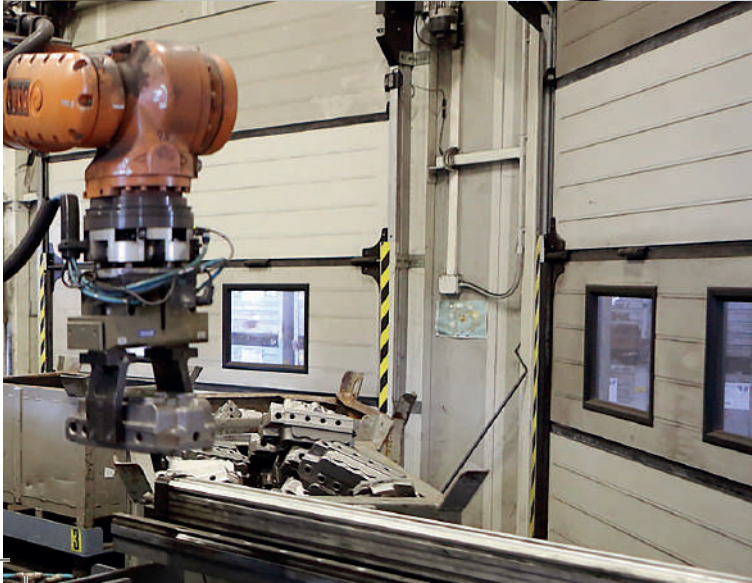
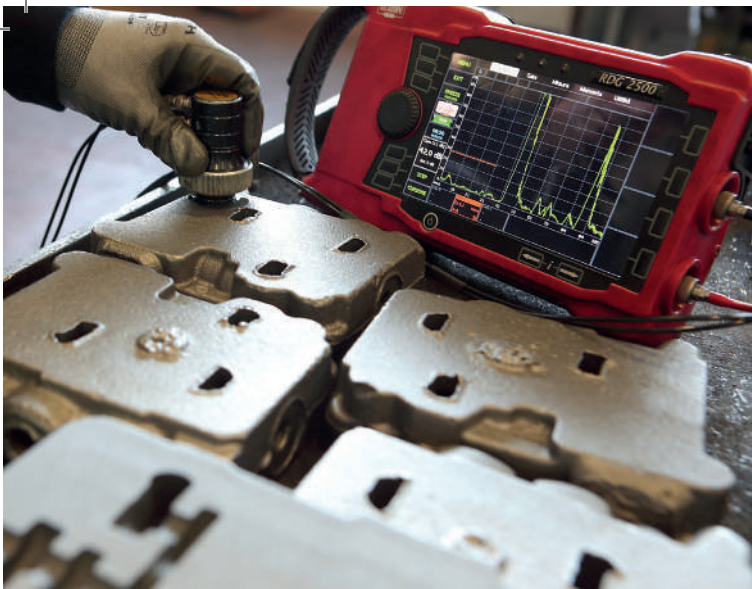
Fondmatic Hydraulic Castings combines specialised personnel, automation, and technological innovation to guarantee high quality standards and full control over the various stages.

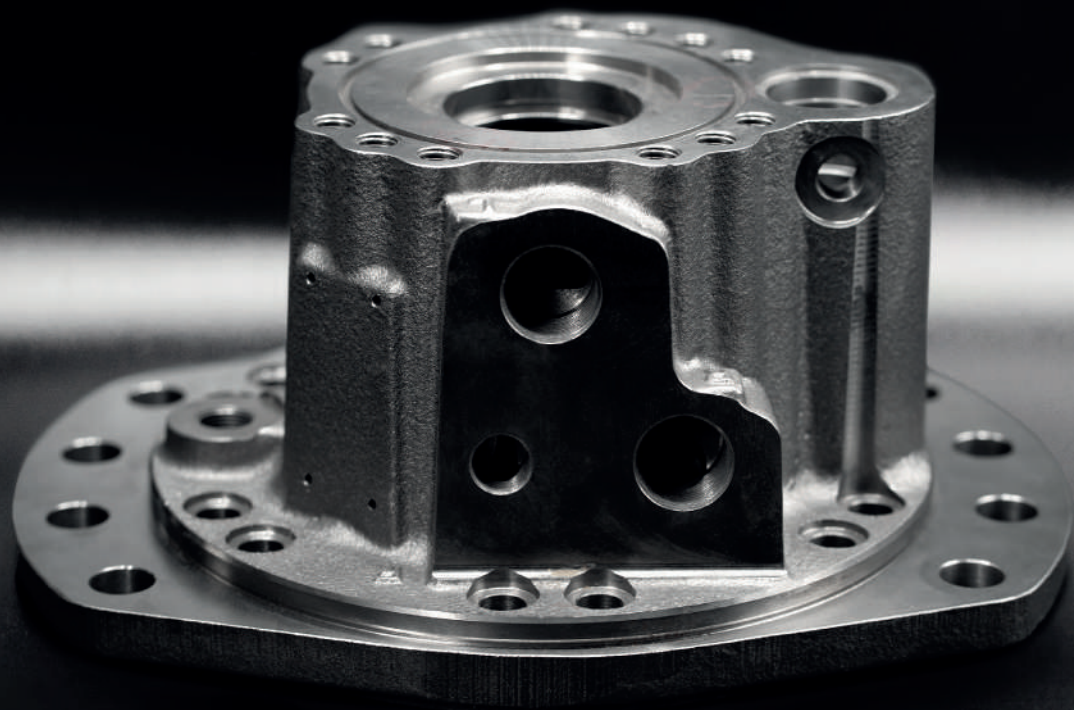


CAPABILITIES

- Green sand moulding
- Production capacity: 15,000 tonnes
- Materials: grey and ductile cast irons
- Melting system with rotary kilns and electric induction furnaces
- Horizontal Mecfond plant
- Casting weights from 1 kg to 90 kg
- In-house production of cores for hydraulic castings
- Robotized cells for finishing hydraulic castings
- 100% fibre-optic controls for guaranteed integrity and cleanliness ducts









Founded in **1848**, **Grandry Technicast** boasts a hundred years of experience and a high degree of specialisation in hydraulic applications. The foundry is fully focused on **casting of ductile cast irons**, meeting the needs of the hydraulics market. Highly specialised staff and strict process control-guarantee high quality standards, satisfying customer requirements.



CAPABILITIES

- Green sand moulding
- Production capacity: 10,000 tonnes
- Materials: ductile cast irons
- Melting system with electric induction furnaces
- Horizontal BMD plant
- Casting weights from 5 kg to 60 kg
- In-house production of cores for hydraulic castings
- Robotized cells for finishing hydraulic castings
- 100% fibre-optic controls for guaranteed integrity and cleanliness of ducts









SHELL MOULDING TECHNOLOGY





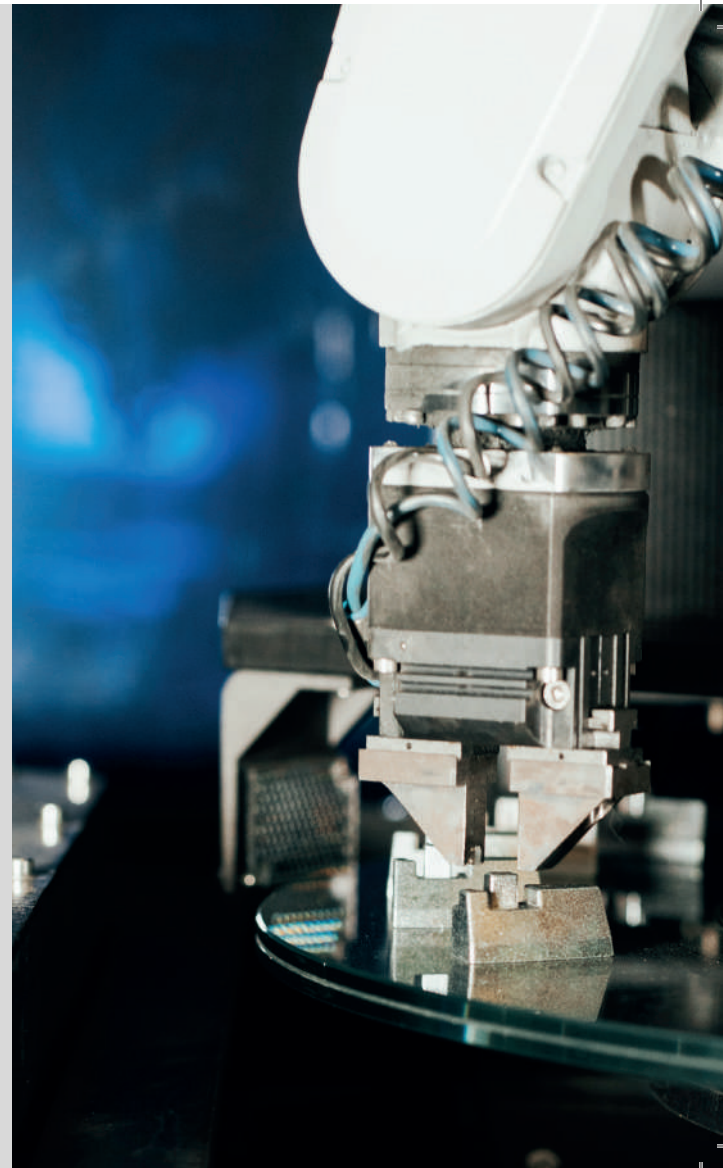


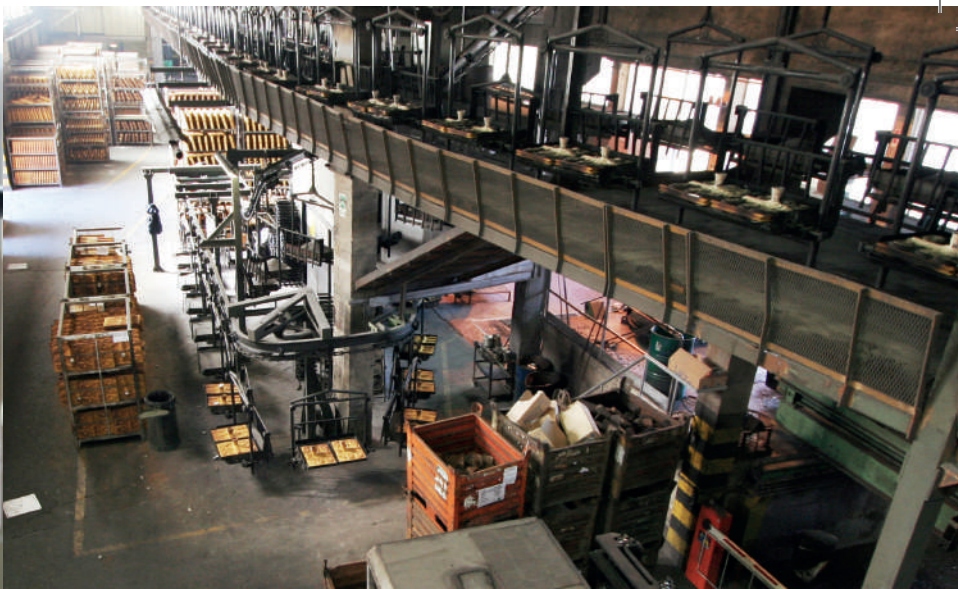
P PERUCCHINI

Founded in **1948**, Perucchini is specialised in **full-shell moulding** process since the 1970s. Thanks to its acquired know-how and technological innovation, the company is today a **leader in the production of high-precision components**, developed and manufactured for major players in the hydraulic, fine mechanics and automotive industries. Constant research into innovative solutions, the development of state-of-the-art production facilities and strict process control, guarantee iron and steel castings that fully meet customers' requirements (nodular, vermicular, ADI and Cr-Ni hard cast iron, as well as stainless, alloy, micro-alloyed and carbon steel).

CAPABILITIES

- Full shell moulding
- Production capacity: 10,000 tonnes
- Materials: grey, vermicular and ductile cast irons, carbon and stainless steels
- Melting system with electric induction furnaces
- 2 Horizontal plants and one vertical plant with robotic casting
- Casting weights from 0.1 kg to 50 kg
- In-house production of cores for hydraulic castings
- Robotised cells for automotive casting finishing
- Fibre-optic inspections for integrity assurance and duct cleaning
- Complex shapes with high dimensional accuracy and tight tolerances









SCARANELLO

Established in **1973**, **Scaranello** has extensive experience in grey cast irons, ductile cast irons and cast irons alloyed with **shell moulding** technology. It's specialized in sealing rings for leading global OEMs. The company produces cores with state-of-the-art technology and supplies a wide variety of cast irons according to customer specifications. Quality and traceability are guaranteed throughout the entire production process.



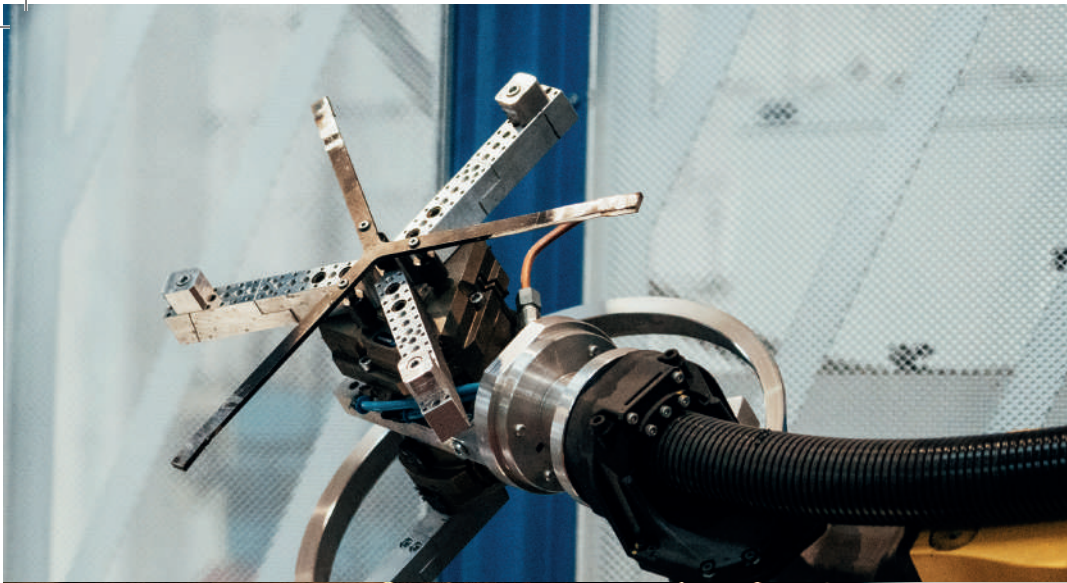
Thanks to mechanical machining and component finishing, the company expands the technological offer of **Scaranello** foundry and strengthens its characteristics as a strategic partner.



CAPABILITIES

- Full shell moulding
- Production capacity: 3,000 tonnes
- Materials: cast irons Ni Hard, Cr Hard, Ni Resist, ductile
- Melting system with electric induction furnaces
- Horizontal plant for shells
- Casting weights from 0.3 kg to 6 kg
- In-house core production
- Equipment for superfinishing hydraulic seal rings
- Complex shapes with high dimensional accuracy and tight tolerances





CAPABILITIES

- Turning performed on single and multi-spindle CNC lathes
- Heat treatment furnaces
- Lapping on flat and spherical LapMaster
- Washing with an ultrasound machine
- Polishing with automated systems with manual and robotic loading
- High-quality rubber gasket assembly, approved by the final customers





The background of the image is a dark, industrial setting. On the left, a heavy metal chain is attached to a structure, with a bright light source behind it. In the center, a large, rusted metal plate is being worked on, with a bright spark emanating from it. The overall atmosphere is one of intense industrial activity.

COMAC
Group

MACHINING SOLUTIONS



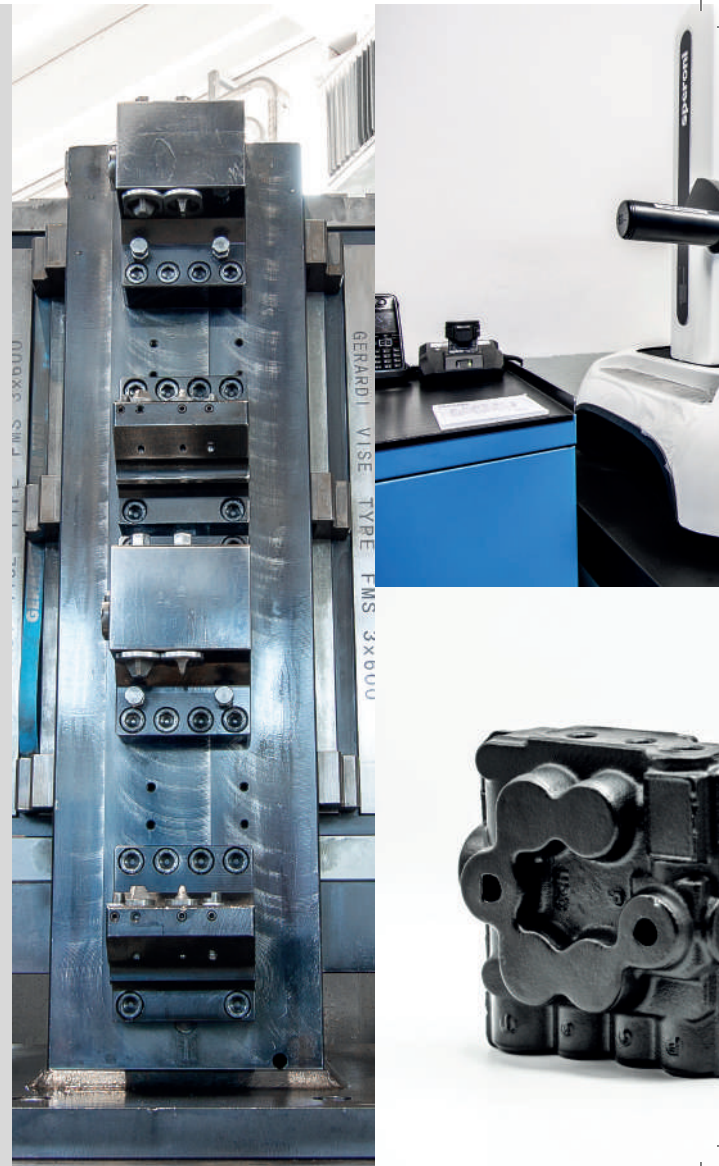


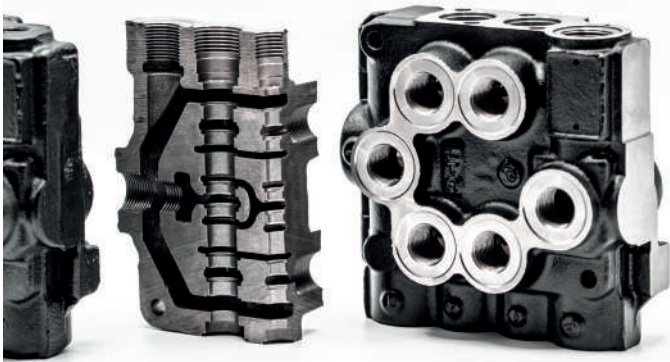
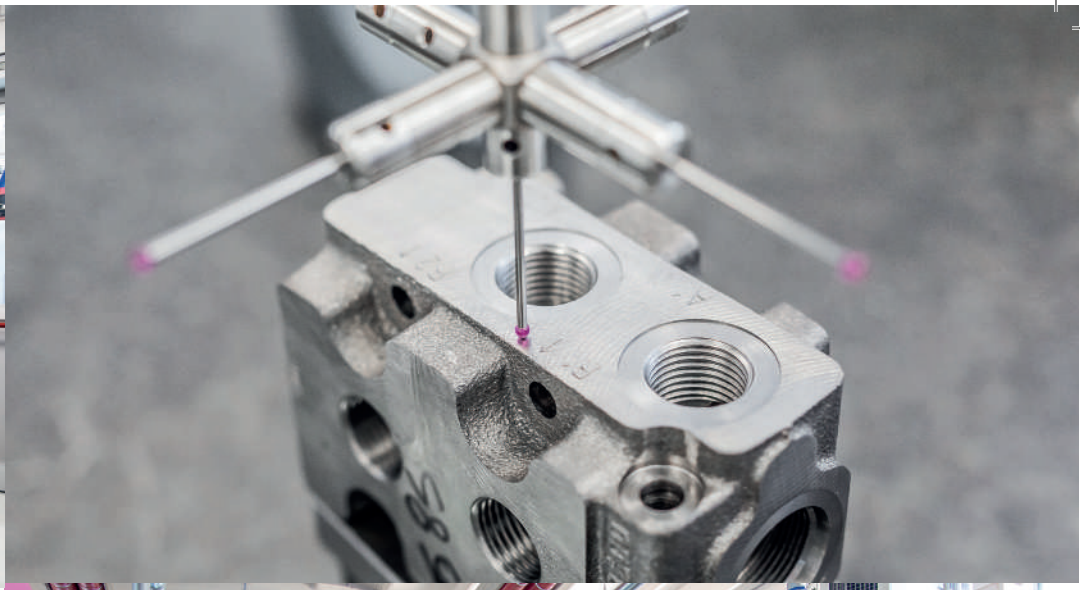
Fondmatic Hydraulic Machining is a division specialised in the machining of components for hydraulic systems, agricultural machinery, and construction machinery. The synergy which exists between Fondmatic Hydraulic Castings and Fondmatic Hydraulic Machining creates **absolute excellence in the hydraulic sector.**



CAPABILITIES

- Mechanical workshop for machining hydraulic castings
- STAMA CNC Machining Centres
- Mori Seiki CNC Machining Centres
- 5-axis CNC machining centres
- Ultrasonic high-pressure and vacuum washing machines









Established in **1966**,
Nuova Torneria Zanotti specializes in turning
services of high precision mechanical parts
for use in hydraulic and electromechanical industries.
The added value of the company comes
from the experience and skill and from
the **costant technological updating**
of its machines and quality control systems.





CAPABILITIES

- Turning, milling, tapping, broaching, boring, lapping, rolling, and deburring
- 41 CNC machines, with fixed and moving heads and bar feeders
- Metrology room
- Dedicated plant for the assembly of valves and hydraulic components with special multifunctional equipment. The technical staff is always at the customer's side in the search for industrial solutions that reduce assembly time











FONDERIE DI MONTORSO



FONDERIE DI MONTORSO: Via Valchiampo 62 – 36050 Montorso Vicentino (VI) – 0444 472700 – info@c2macgroup.com

FONDMATIC HYDRAULIC CASTING: Via Degli orsi 518 – 40014 Crevalcore (BO) – 0444 472700



GRANDRY TECHNICAST: Bd de la Primaudière 4 – 72300 Sablé-sur-Sarthe – France – +33 2 43 95 07 45 – info-technicast@c2macgroup.com

PERUCCHINI: Via IV Novembre 318 – 28887 Omegna (VB) – 0323 643335 – Info.perucchini@c2macgroup.com



FONDERIA SCARANELLO: Via S. Sisto 16 – 45100 Rovigo (RO) – 0425 474474



SPS: Via Primo Maggio 9 – 45100 Rovigo (RO) – 0425 474474



FONDMATIC HYDRAULIC MACHINING: Via Degli orsi 518 – 40014 Crevalcore (BO) – 0444 472888

NUOVA TORNERIA ZANOTTI: Via Campania 37 – 40024 Castel San Pietro Terme (BO) – 051 695 8594



MECAF: Via degli Intarsiatori Rolesi 3 – 42047 Rolo (RE) 0522 667181 info@c2macgroup.com



c2macgroup.com | +39 0444 472700 | info@c2macgroup.com

c2macgroup.com | +39 0444 472700 | info@c2macgroup.com