



**RANGE
RESTYLING**

SOLENOID VALVES 2/2 EC SERIES

EC082
Size 3/4-16



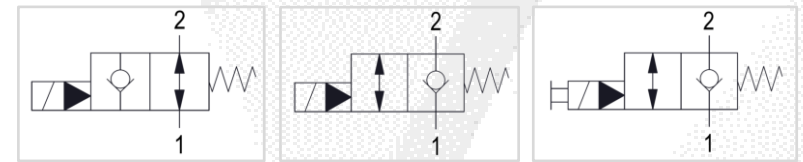
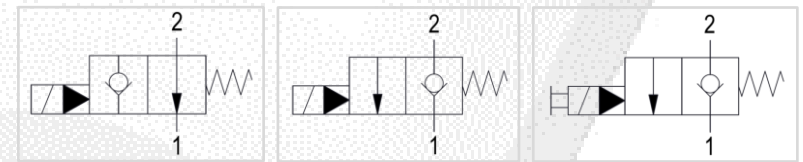
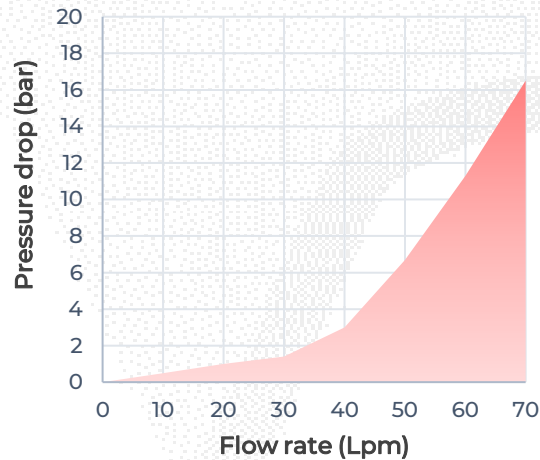
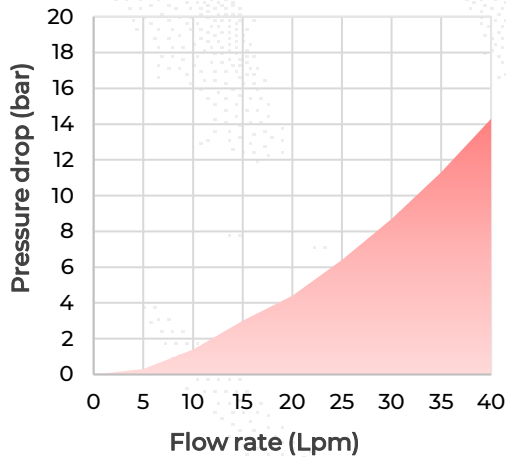
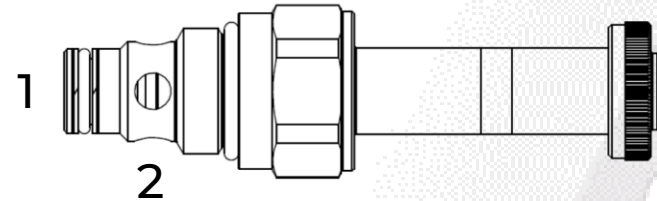
EC102
Size 7/8-14



EC082

EC102

Max working flow [lpm gpm]	40 10,5	70 18,5
Max working pressure [bar PSI]	350 5075	350 5075
Leakage (@ 200 bar & 46 cSt) [cm ³ /min]	0,25	0,25
Max contamination level ISO4406	18/16/13	18/16/13



Normally open

Normally closed

Normally closed
Manual override