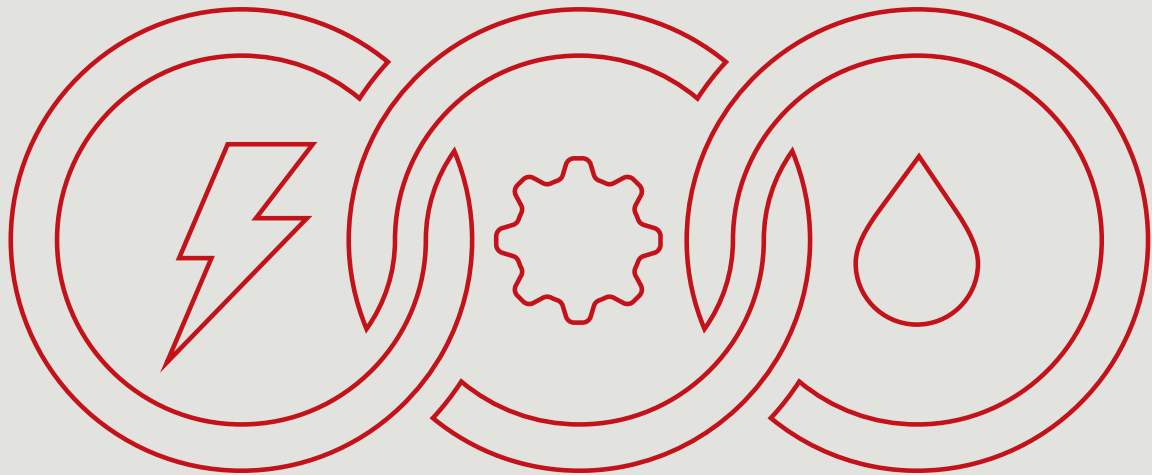


Company Profile



PMP

THE APPLICATION SPECIALIST

PMP



THE APPLICATION

Index

-
- 07** Innovation
 - 09** Pioneers of development
 - 11** Vision of the Future
 - 15** Power Transmission Division
 - 35** Fluid Power Division
 - 41** Electric Vehicle Driveline Division
 - 48** Locations



PMP

Innovation

Integrating PMP revolutionary technologies into your equipment:
this is our business.

PMP vision is to develop and unveil to its customer the
technical solutions of the future.

This is why PMP has a reputation for always pushing the
boundaries of traditional solutions. **We are the revolutionists of
current technologies.** We dominate knowledge, go above and
beyond to deliver customers exactly what they need.

Our penchant for change is unstoppable.

This is why we develop, create and test solutions that come before
their time - solutions which anticipate market demands to meet
the needs of the future. Our customers can then benefit from
innovative and ahead-of-time technologies that allow them to
achieve their technical goals and improve their performances, far
beyond competitors.

Breakthrough technology is the key. PMP success comes from
offering complete solutions that allow for technological leadership.



“We constantly introduce new solutions into the market developed by our engineers that strive to achieve innovations that seemed unreachable before.”

PMP

Pioneers of development

Italian DNA. International presence. One unique partner.

We have an Italian DNA, but our home is the world. This is a strategic choice, we are and we want to be a company without borders. Our core R&D center is located in Friuli Venezia Giulia, Italy, where all our products are patented, designed and brought to life. We constantly introduce new solutions into the market developed by our engineers that strive to achieve innovations that seemed unreachable before.

We integrate the best technologies in electronics, hydraulics, mechanics, to create solutions that are

unique in the world. Technological synergies are intersected and blended to break down traditional technical barriers.

We believe in a worldwide organization without limits or borders, able to provide common solutions all over the world and to give prompt and localized service to PMP customers. Our customers need to be present and competitive worldwide too, that is why PMP is able to produce and supply its products with a continuous strive for localization. Our local technicians are trained to provide a qualified

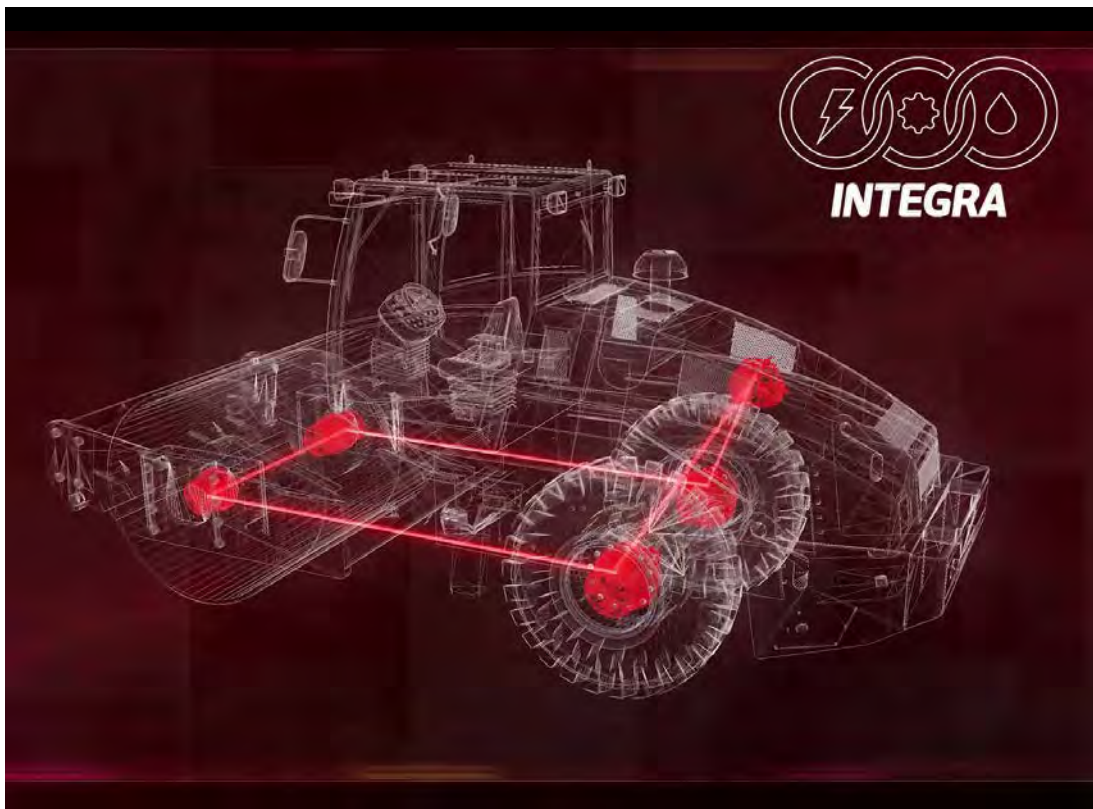


POZZO Luigino, PMP President

after sales support, to guarantee to the market a simple, quick and effective service. Our philosophy is being a Unique Partner, for a fast and effective service everywhere.

In our applications we are market leaders, Italian mind with a global presence and unique technologies.

This is in our DNA.

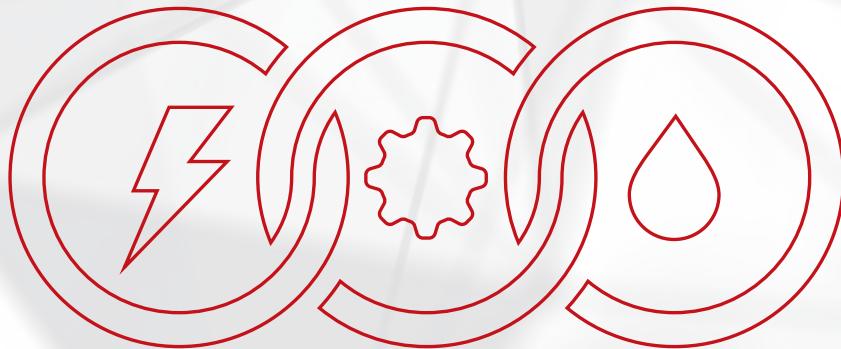


INTEGRA

Vision of the Future

11

INTEGRA is a leap into the future.



**INTEGRA is the interaction and integration of complex systems:
Electronic, Mechanical and Hydraulic systems.**

The interaction between our Research & Development department and our internal training structure and the strategic alliances with premium research labs and Universities are the base of the **PMP technological hub** where INTEGRA project has been developed.

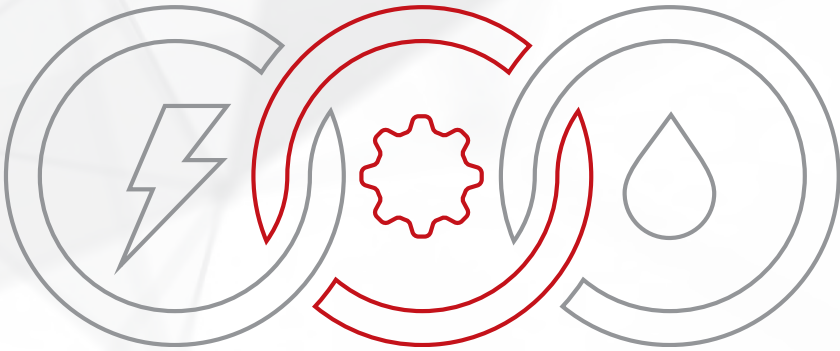
**PMP TECHNOLOGICAL HEART PULSES WITH THE SINGLE GOAL TO INNOVATE.
IT PULSES TO CREATE THE TECHNOLOGIES OF THE FUTURE.**

This clear business model makes INTEGRA the winning solution for the future.

Three business divisions (POWER TRANSMISSION, FLUID POWER and ELECTRIC DRIVELINE VEHICLE Divisions) bring together the best electronic, hydraulic and mechanical technologies to create unique technical solutions suitable for each application.

INTEGRA is the future and it is now available at PMP.





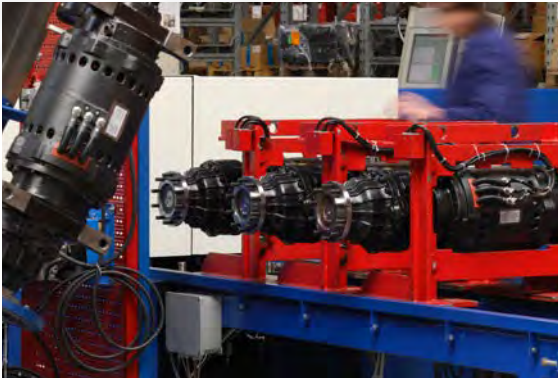


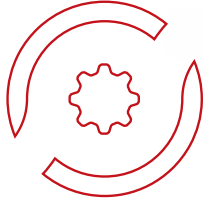
POWER TRANSMISSION DIVISION



COMPLETE SOLUTIONS
FROM A SINGLE SUPPLIER







POWER TRANSMISSION DIVISION

PMP Power Transmission Division is specialized in the designing, testing and manufacturing of planetary gearboxes for several kind of applications.

PMP philosophy is to master the technologies that allow our engineers to design transmissions with the **highest efficiency, quietness of operation and reliability** and to use our specialized manufacturing capabilities to rapidly create the transmission that best suits the applications of our customers.

Nowadays developing **innovative solutions** and rapidly bringing these solutions to the market is the winning factor for successful companies. Since its foundation PMP has carried out a **continuous research activity** in cooperation with Italian and foreign universities and has developed international patents, regarding innovative technologies.

This design experience is combined to a **strong know-how in gear manufacturing and machining processes**, which makes PMP a valuable partner throughout the supply process.

PMP transmissions are designed to support high input speed, either from compact electric motors or heavy duty hydraulic motors, always providing low noise levels and the highest efficiency.

These solutions are **extremely competitive** in terms of performances, reduced dimensions and weights, overall efficiency; giving PMP a cutting edge as a supplier of complete systems.



PMC

Track Drives



PMC planetary gearboxes combined with electric or hydraulic motors are specifically designed for heavy duty tracked application.

LONGER LIFE

Special solutions in the brake design provide durability also in demanding applications and the use of the latest technologies in gear design and manufacturing extends the gearbox life for rated loads and torques.

PMC drives offer outstanding features in terms of load capacity, toughness, smoothness of operation and cost effectiveness.

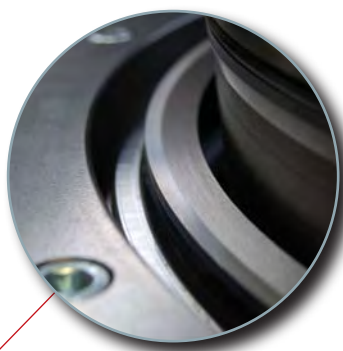


HIGHLIGHTS



PMC gearboxes feature special gear profiles in order to optimize gear contact in the widest range of loading and torque conditions

● LOWER GEARS WEAR



PMP can offer up to three levels of protection from dirt according to the application, including duo cone seal, v-ring, guard ring

● HIGHER PROTECTION



PMC feature the well-known wet disk brake technology with high pressure seals for very low and very high working temperature

● SUPERIOR BRAKING

Product range and technical data

PMC		2.000	3.000	4.000	4.500	6.000
Max output torque	Nm	20.000	30.000	40.000	45.000	62.000
Available ratios	i:	67 - 169	56 - 125	63 - 120	55 - 135	60 - 162
Max Brake Torque	Nm	600	300	670	950	630
Weight	Kg	100	165	180	190	280

PMC		9.000	11.000	18.000	26.000
Max output torque	Nm	90.000	110.000	180.000	240.000
Available ratios	i:	65 - 183	85 - 173	190 - 210	210
Max Brake Torque	Nm	1.000	1.000	1.200	1.200
Weight	Kg	445	505	750	830



PMCI

Integrated Track Drives



PMCI drives integrate high pressure, high speed motors into solid planetary gearboxes. The high pressure motors grant a longer life of critical components and an increased durability and efficiency of the entire system.

HIGHER EFFICIENCY

Full bronze cylinder sleeves on rotating block, bimetallic (bronze- steel) distribution plate, rotary group with differential spring system, gearbox main seal with triple seal system (mechanical labyrinth, v-ring seal, main oil seal) are some of the technical solutions that make the PMCI the ideal solution for heavy duty applications.



HIGHLIGHTS



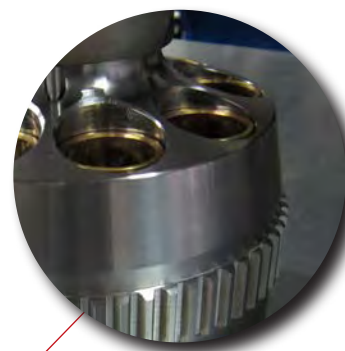
PMCI series feature special counterbalance valve designed by PMP R&D department, featuring smooth braking and prompt start up

● OPERATIONAL EASE



The stand alone main bearing features a full bearing-steel outer ring and it is supplied with optimal pre-load

● HIGHER DURABILITY



PMCI motors feature **500 bar pressure technology**, which makes them extremely solid for the toughest applications and conditions

● SUPERIOR PERFORMANCE

Product range and technical data

PMCI		1.000	1.200	2.000	2.500	3.000	3.500
Max output torque	Nm	10.000	12.000	20.000	20.000	30.000	35.000
Displacement max	cc	45 / 55	55	55	72	72	72
Max Pressure	bar	350	350	350	350	350	350
Available ratios	i:	24 - 53	30 - 53	67 - 169	55	56 - 125	149,3- 164
Park brake torque	Nm	200	200	200	240	240	240
Weight	kg	82	90	120	175	175	200

PMCI		4.000	4.500	6.000	9.000	11.000
Max output torque	Nm	40.000	45.000	62.000	90.000	110.000
Displacement max	cc	110	110 / 130	180	180	180
Max Pressure	bar	350	350	350	350	350
Available ratios	i:	63 - 120	55 - 135	60 - 143	65 - 183	85 - 173
Park brake torque	Nm	545	545	700	700	700
Weight	kg	245	245	370	490	505



PMR

Wheel Drives



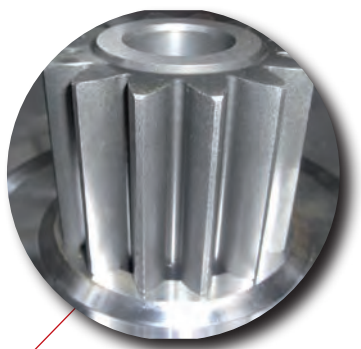
Featuring wet disk parking brakes and mechanical disengage system, PMR wheel drives can be used on all applications where **reliability, strength and smoothness of operation** are required.

HIGHER DURABILITY

PMR wheel drives are characterized by **outstanding bearing load capacities** thanks to the use of large taper roller bearings and optimized thermal behaviour thanks to a special wet disk brake design. **The steel-on-steel coupling of the metal seal and the design of the labyrinth** (flange / flange coupling to reduce the entry of mud and dirt) provide the best durability in adverse working conditions (eg mud, dirt).



HIGHLIGHTS



PMR gearboxes feature special gear profiles, in order to optimize gear contact at all torque and loading conditions

● HIGHER DURABILITY



PMR gearboxes can offer static and dynamic brake systems, developed and tested by PMP R&D department

● SUPERIOR BRAKE CONTROL



PMR gearboxes are equipped with special seals for applications working at very low temperatures (-40°C)

● HIGHER PROTECTION

Product range and technical data

PMR		400	680	700	710	710 HT
Max output torque	Nm	3.700	7.000	7.800	9.000	11.500
Available ratios	i:	99	25 - 55	19 - 51	55	74
Max Brake Torque	Nm	75	250	260	250	250
Weight	Kg	84	50	60	51	62

PMR		1.300	2.000	2.000 S2	4.000 BS
Max output torque	Nm	12.500	20.000	14.000	27.000
Available ratios	i:	22 - 34	67 - 168	35 - 44	63 - 75
Max Brake Torque	Nm	600	300	600	450
Weight	Kg	88	110	90	180



PMT

Swing Drives



PMT swing drives are designed for construction machinery where the rotation of the upper structure requires reliability and accurate positioning.

SUPERIOR PERFORMANCE

They feature outstanding radial load capacity on the output pinion and the possibility of offering both integrated or separated pinion with spline connection. PMT swing drives features compact dimensions, outstanding performances, simple mounting for a perfect match between pinion and ring gear.



HIGHLIGHTS



PMT gearboxes feature dedicated brake systems which can be operated for parking and service functions, increasing safety and accuracy

● HIGHER DURABILITY



PMT gearboxes feature special gear profile in order to optimize gear contact especially at high torque conditions

● SUPERIOR BRAKE CONTROL



Planetary gear structure is designed to minimize deformation under load, maintaining the best gear contact in every condition

● HIGHER PROTECTION

Product range and technical data

PMT		650	1.000
Max output torque	Nm	7.000	10.000
Max input speed	rpm	3.500	3.500
Available ratios	i:	19 - 110	20 - 115
Weight	Kg	100	135



PMTE

Swing Drives



PMTE are efficient, quiet and durable swing drives with hydraulic axial piston motors designed for heavy duty applications. The high pressure applications technical standards of these models allow longer life of critical components and increased durability of the entire system.

ACCURACY AND QUIETNESS

PMTE models are designed for the swing systems of hydraulic excavators from 6 to 50 tons and introduce several innovative solutions in terms of load capacity and compactness.



HIGHLIGHTS



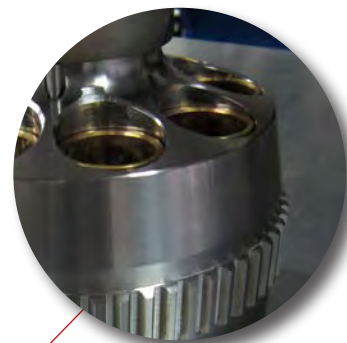
PMTE features special valve for the braking of the excavator: shockless valves, smoothness valve and brake delay valve

● OPERATIONAL EASE



PMTE presents hydraulic brakes featuring special separators that allow immediate brake disk opening at brake disengage

● SUPERIOR BRAKE CONTROL



All PMTE motors feature **500 bar pressure technology**, i.e. extremely solid motors for the toughest swinging conditions

● SUPERIOR TOUGHNESS

Product range and technical data

PMTE		700	2.000	3.000	4.000	6.000
Max output torque	Nm	4.500	8.500	15.000	18.000	32.000
Available ratios	i:	21 - 29	25 - 45	16 - 30	16 - 21	24 - 35
Motor displ.	cc	45 - 55	72	130	180	180
Max pressure	bar	350	350	350	350	350
Weight	Kg	70	130	200	230	310



PMB

Mixer Truck Gearboxes

PMB gearboxes provide the highest levels of reliability, efficiency and durability in harsh environments and in the toughest conditions, thanks to its lean and solid design,

HIGHLY CUSTOMIZABLE AND DURABLE

Optional water pump connection, optional speed sensor and different available reduction ratios make PMB gearboxes highly customizable.



PMBEC

Compact Mixer Truck Gearboxes

When a compact solution for mixer truck is required, PMBEC provides outstanding weight reduction (40%) and outstanding length reduction (55%) outside of the mixer compared to traditional solution.

OUTSTANDING COMPACTNESS

Equipped with high technology high pressure PMP hydraulic motor, PMBEC features total mechanical protection of oil seals from external agents (freeze, sand, etc).



HIGHLIGHTS



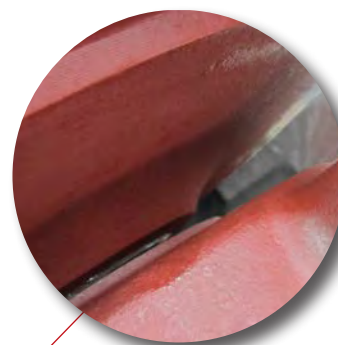
PMB gearboxes feature special main bearing developed by PMP R&D department thanks to more than 30 year experience in the field

● HIGHER DURABILITY



PMP supplies complete transmission systems, including gearbox, hydraulic motors and pumps, water pumps

● COMPLETE SOLUTIONS



PMB gearboxes feature an additional protection profile on the output flange to reduce the risk of seal damage

● HIGHER PROTECTION

Product range and technical data

PMB		6	6.5	7.1	7.8	9.1
Max output torque	Nm	60.000	65.000	70.000	80.000	93.000
Available ratios	l:	100	120	120 / 130	130 / 140	151
Weight	Kg	275	290	305	345	390
Mixer volume	M ³	7	10	12	16	20

PMB		5 EC	7 EC
Max output torque	Nm	39.000	70.000
Available ratios	l:	122	156
Displacement	cc/rev	33 - 47	62 - 72
Max pressure	bar	450	450
Weight	Kg	150	282
Mixer volume	M ³	3 - 5	9 - 12



PMS

Integrated Dual Drives

PMP pioneers the development of dual drive solutions for electric industrial vehicles offering a **unique range of gearboxes** with integrated electric motor and controller.

HIGHEST SPEED MOTOR

PMS series feature higher efficiency and lower costs compared to traditional solutions, compact and high speed motors (up to 10.000 r.p.m.). Integrated control is also available with automotive grade components.



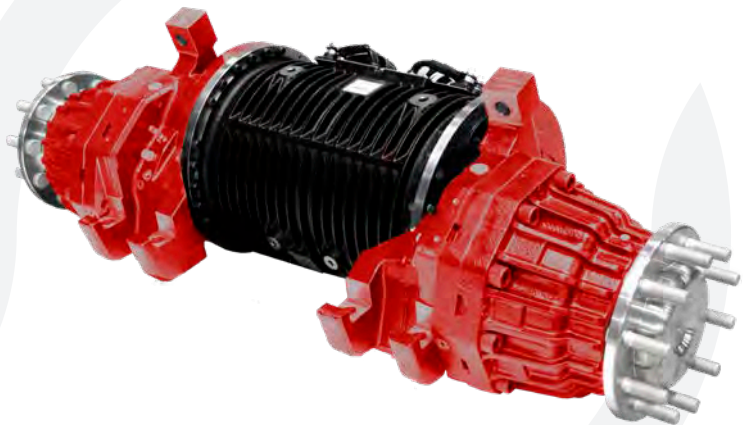
PMS

Drive Axles

PMP offers axles with single and dual motor architecture, specifically designed for **maximum compactness** and featuring superior brake technology.

BEST NOISE PERFORMANCE

Superior technology in gear design and in structural vibration analysis result in the **best noise performance** of its class. Efficiency can be enhanced by innovative permanent magnet motor technology.



HIGHLIGHTS



PMS drives offer different solutions for the brake: from wet disk service and SAHR parking brake to EM parking and service brake.

● SUPERIOR BRAKE CONTROL



PMS drives provide the highest level of quietness and efficiency thanks to the PMP R&D long experience in vibration and noise assessment

● QUIET AND EFFICIENT



Reliability of PMS drives is proved by more than 30-year experience in the field and guaranteed by severe testing procedure of PMP assembly lines

● HIGHER REALIABILITY

Product range and technical data

PMS		601 / 621 / 625	701 / 721 / 725	855 / 875	880
Max output torque	Nm	1.700	3.000	5.000	10.000
Max wheel load	Kg	2.800	4.400	6.200	9.000
Available ratios	i:	18 - 42	17 - 31	20 - 36	28
Typ. electric motor power	kW	5	10	16	20
Forklift capacity	t	1 - 2.5	2.5 - 3.5	4.0 - 5.5	6.0 - 8.0
Tow tractors capacity	t	10	30	50	80



PMF

PARALLEL SHAFT TAILOR MADE GEARBOXES

PMP had a division specialized in the design and production of **special planetary gearboxes** for industrial applications.

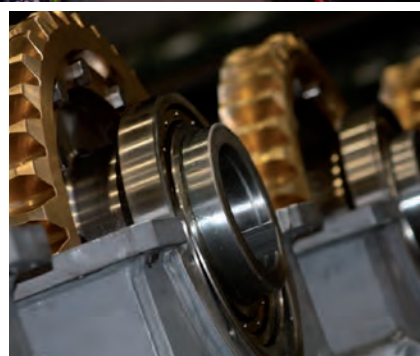
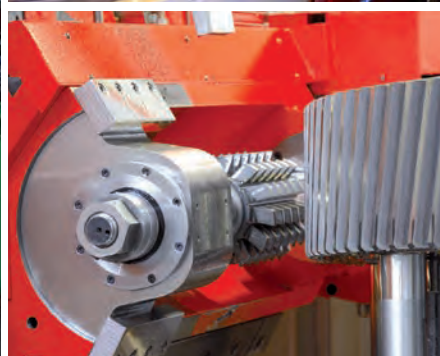
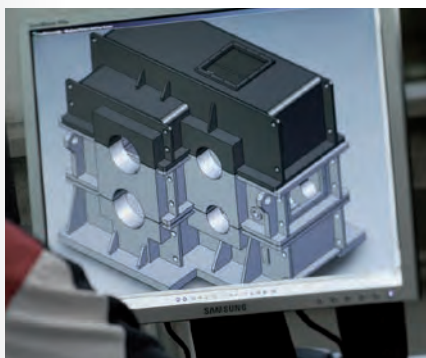
The vertically integrated structure of PMP allows **direct management of the entire production process**: from engineering to project development, from the manufacturing of components to final assembly and testing.

Thanks to PMP's production capabilities and manufacturing flexibility, the **lead time between concept and production can be surprisingly short** and enhance competitiveness in today's market conditions. In addition, PMP can provide **technical support throughout the development process** of new products, bringing to the table its extensive experience in a wide range of gearboxes.

PMP has more than 25 years of experience in the production of planetary gearboxes for metal plants and rolling mills. In these 25 years, several projects were developed upon very specific requests from customers worldwide.

This important background allows PMP to successfully manage projects with the highest degree of complexity and integration, developing each time the best gearbox for the specific application.

PMP is also ISO 9001:2015 and ISO 3834-2:2005 certified and complies with the best standards for gear design and manufacturing.





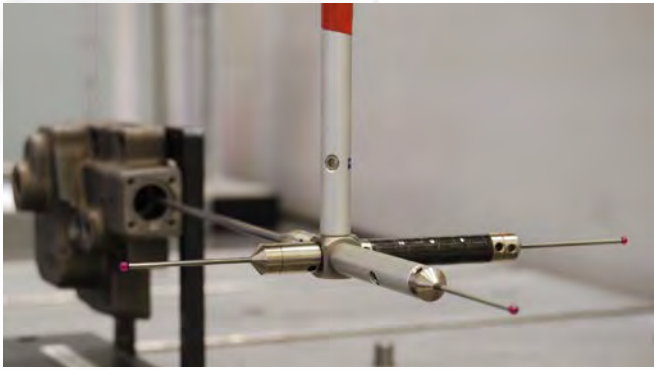


**FLUID
POWER
DIVISION**



COMPLETE SOLUTIONS
FROM A SINGLE SUPPLIER







FLUID POWER DIVISION

PMP Fluid Power Division is dedicated to the design and manufacturing of high pressure axial piston pumps and motors for a wide range of mobile and industrial applications.

PMH models are **entirely manufactured by PMP**: this vertical integration allows **full control of the manufacturing processes and competitive production lead times**, to support our customers in today's demanding market conditions.

Premium materials, tight tolerances and precision machining result in a **product that is made to last**. The geometry of the components is optimized to reduce wear and provide the most efficient oil flow. Similarly the global structure of the transmission is designed to handle pressure and loads without deformation: this way efficiency is maintained in high pressure working conditions.

PMP's Fluid Power Division and its partners can count on **modern test benches to perform endurance tests** by replicating the toughest working conditions for the equipment while constantly monitoring performances and efficiencies.

PMP offers complete systems by combining PMH hydraulic transmissions with the mechanical products of the Power Transmission division, making **PMP a unique partner for many industries**.



PMH M / MC / MK

Axial Piston

Hydraulic Motors



PMH M / MC / MK are high pressure axial piston motors specifically designed to be used on heavy duty machines for traction and auxiliary functions, providing efficiency and durability.

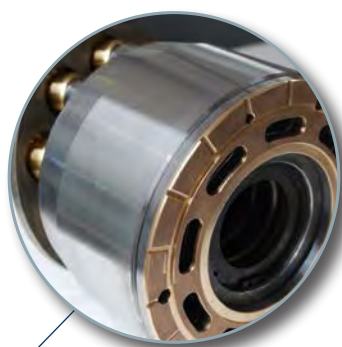
MK are plug-in type hydraulic motors designed for mounting on PMC and PMR gearboxes while PMH M / MC are flanged type motors. The PMH MC / MK are available both in fixed and variable displacement.

HIGH EFFICIENCY AND HIGH PRESSURE

The geometry of the components is optimized to reduce wear and provide the most efficient oil flow. Similarly the global structure of the motor is designed to handle extreme pressure and loads: this way efficiency is also maintained in high pressure working conditions.



HIGHLIGHTS



PMP motors feature **500 bar pressure technology**, which makes them extremely solid for the toughest applications and conditions

- SUPERIOR EFFICIENCY



MCV/MKV motors offer a wide range of controls: HD (hydraulic direct), HP (hydraulic two position), E1-E2 (electric two position) and Autoshift options on request

- HIGHLY CUSTOMIZABLE



All PMP motors offers integrated flushing valves for closed loop applications

- HIGHER PERFORMANCE

Product range and technical data

PMH (fixed displacement)		-	-	-	-	M 72	M 90	M 110	-
		MCF 35	MCF 47	MCF 55	MCF 63	MCF 72	MCF 90	MCF 110	-
		-	MKF 47	MKF 55	MKF 63	MKF 72	MKF 90	MKF 110	MKF 180
Displacement	cc/rev	35	47	55	63	72	90	110	180
Max output speed	rpm	4.500	4.300	4.300	4.100	4.100	4.000	3.800	3.000
Max working pressure	bar	500	500	500	500	500	500	500	500
Max output torque	Nm	225	299	350	401	480	570	700	1.100
Weight	Kg	18	23	25	29	30	33	34	55

PMH (variable displacement)		MCV 55	MCV 90	MCV 110	MCV 180
		MKV 55	MKV 90	MKV 110	MKV 180
Displacement	cc/rev	55	90	110	180
Max output speed	rpm	4.300	4.000	3.800	2.900
Max working pressure	bar	500	500	500	500
Max output torque	nm	350	570	700	1121
Weight	Kg	25	36	36	75



PMH P

Axial piston hydraulic pumps



PMH high pressure axial piston pumps for closed loop are specifically designed to be used on heavy duty machines for traction and auxiliary functions, providing efficiency and durability.

PRODUCTS MADE TO LAST

Premium materials, tight tolerances and precision machining result in a product that is made to last. The geometry of the components is optimized to reduce wear and provide the most efficient oil flow. Similarly the global structure of the pump is designed to handle pressure and loads without deformation.



HIGHLIGHTS



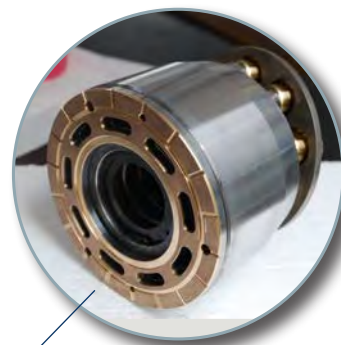
On demand, PHM P feature an additional valve block to include flushing valve, by pass system, dead man valve, cut off valve.

- HIGHLY CUSTOMIZABLE



Wide range of controllers from manual MS, to electric proportional EP, to special controllers like MY, RE specifically designed for special application.

- TOTAL CONTROL



All PMP pumps feature **500 bar pressure technology**, i.e. extremely solid pumps for the toughest applications and conditions.

- SUPERIOR PERFORMANCE

Product range and technical data

		PMH	P35	P55	P72	P90	P110	P180	P210
Max shaft speed	rpm		4.500	4.300	4.100	4.000	3.800	2.900	2.650
Max working pressure	bar		500	500	500	500	500	500	500
Input torque @ 250 bar	Nm		223	350	480	570	700	1.121	1.336
Weight	Kg		39	42	56	68	68	148	152







ELECTRIC VEHICLE DRIVELINE DIVISION



COMPLETE SOLUTIONS
FROM A SINGLE SUPPLIER







ELECTRIC VEHICLE DRIVELINE DIVISION

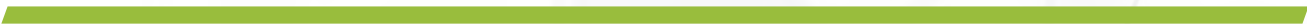
PMP Electric Vehicle Driveline Division is specialized in designing integrated traction systems for electric vehicles.

PMP has been at the forefront of electric traction systems since late '90s with the PMS product range which has become an industry standard for electric forklift and electric towing tractors worldwide. PMP contributed to the industry transition from DC technology to AC drives, promoting solutions with 5.000 rpm already two decades ago.

The strive for integration and innovation has later led to the introduction by of **high speed integrated motors with speeds up to 10.000 rpm**, reduced copper content and unrivalled quietness.

The outstanding compactness of these drives has paved the way to the introduction of PMP integrated controller drives, with **latest automotive grade components, integrated speed sensor and several new features:** for the vehicle's OEM the saving in terms of reduced harnessing, compactness, easiness of installation and service are evident.

PMP offers complete systems by combining PMP electric motors with the mechanical products of the Power Transmission Division, making **PMP a unique partner for many industries**





High speed traction motors

Features

- High speed motor (**up to 10.000 rpm**)
- Super compact design
- Innovative position control
- High power integrated inverter
- Power 1-20 kW
- Integrated in PMP Drives



Integrated controllers

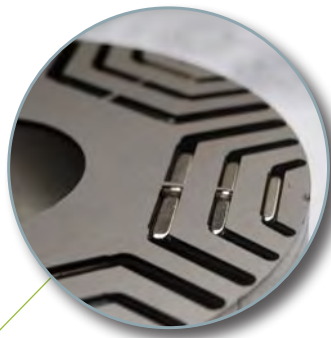
Features

- AEC-Q 100 electronics
- up to 950 A
- **Automotive grade components** for controller
- Integrated in PMP drives



PMP electric motors are tailored on each application. This guarantees high efficiency and the best performance compared to standard motors.

● BETTER PERFORMANCE



SRPM motors design grants a superior efficiency and high torque per volume ratio. Special design guarantee lower cogging torque compared to standard IPM motors.

● SUPERIOR EFFICIENCY



The integration of the controller into the motor housing, allows compact dimensions, reduce wiring complexity and setup time. Motor tuning and speed sensor are part of the solution

● INTEGRATED



GLOBAL PRESENCE. WORLDWIDE GROWTH

Locations

PMP Industries Spa is the holding company of the PMP international group including

7 entities, 3 business divisions and over 1000 employees worldwide.

PMP group HQ are located in Coseano, North East of Venice where the company was first established.

PMP's manufacturing locations supply **integrated** mechanical, hydraulic and electric solutions **worldwide**.



Italy

Coseano manufacturing plants were built in 1995 and further expanded in 2005, 2007 and 2014; these plants are ISO 9001:2015 certified since 2002.

PMP PRO-MEC S.P.A.

Location Coseano, Italy

Activities Manufacturing

Sales & Service

GLOBAL PRESENCE. WORLDWIDE GROWTH

Locations



China TAICANG

The Taicang manufacturing plant was completed in 2009. This plant is ISO 9001:2015 certified and it is also an excellent logistic hub for China, thanks to its port and its strategic location nearby Shanghai.

China CHANGZHOU

In 2018 a second Chinese manufacturing plant opened in Changzhou to serve the important local market.



Bosnia GRADIŠKA

The Gradiška plant was acquired by PMP in 2007. The plant is ISO 9001:20156 certified. The Gradiška plant is a modern facility with the latest machining and welding equipment and a young and motivated workforce. Gradiška also represents a gate towards the Eastern European markets .



India PUNE

PMP Drive Systems India Private Limited was opened in 2010. The plant assembly and production lines serve the local market and all the Middle East and the SAARC area. Pune Area was chosen for its strategic location and its well educated workforce.

PMP DRIVE SYSTEMS TAICANG

Location [Taicang, China](#)

Activities [Manufacturing](#)

[Sales & Service](#)

PMP JELŠINGRAD FMG A.D.

Location [Gradiška,](#)

[Bosnia-Herzegovina](#)

Activities [Manufacturing](#)

[Sales & Service](#)

PMP DRIVE SYSTEMS INDIA PVT. LTD.

Location [Pune, India](#)

Activities [Manufacturing](#)

[Sales & Service](#)

PMP DRIVE SYSTEMS CHANGZHOU

Location [Changzhou, China](#)

Activities [Manufacturing](#)

[Sales & Service](#)



USA CINCINNATI

PMP Industries Inc. was established in 2007 and has been serving the North American market with technical support, product service and local inventory ever since. The Cincinnati location provides excellent logistic services, educated workforce in mechanical engineering and great connectivity, especially with the East Coast and the Mid West.



Malaysia NEGERI SEMBILAN

PMP Drive Systems (SEA) Sdn. Bhd. was founded in 2017 with focus on manufacturing, sales and service to the fast-growing South East Asia region. Malaysia, the centre of South East Asia along with great connectivity, strategic location and talent has allowed PMP to establish an important presence in the region.



Brazil LIMEIRA

PMP Drive Systems do Brasil Ltda was established in 2017 and has been serving the Brazil and South America market with technical support, product service and sales. The PMP Brazil location provides educated workforce in mechanical engineering and excellent logistic for supporting the partners in other countries in South America

PMP INDUSTRIES INC.

Location Cincinnati, United States

Activity Sales & Service

PMP DRIVE SYSTEMS (SEA) SDN. BHD.

Location Negeri Sembilan, Malaysia

Activities Manufacturing

Sales & Service

PMP DRIVE SYSTEMS DO BRASIL

Location Limeira - SP, Brasil

Activities Sales & Service

GLOBAL PRESENCE. WORLDWIDE GROWTH

Locations



Cincinnati
Usa

Coseano
Italy

Gradiska
Bosnia and
Herzegovina

Sao Paulo
Brazil



THE APPLICATION SPECIALIST

info@pmp-industries.com
www.pmp-industries.com

NORTH & CENTRAL AMERICA

sales.usa@pmp-industries.com
T. +1 513 563 3028

SOUTH AMERICA

sales.sa@pmp-industries.com
T. +39 0432 863 625



WESTERN EUROPE

sales.eu@pmp-industries.com
T. +39 0432 863 611

INDIA

sales.ind@pmp-industries.com
T. +91 2135 625 400

CHINA

sales.cn@pmp-industries.com
T. +86 (512) 8270 6688

RUSSIA & EASTERN EUROPE

sales.ru@pmp-industries.com
T. +39 0432 863 670

REST OF THE WORLD

sales.@pmp-industries.com
T. +39 0432 863 611

SOUTH EAST ASIA

sales.sea@pmp-industries.com
T. +60 12 699 2981

PMP

THE APPLICATION SPECIALIST



PMP Industries Group

ITALY | BOSNIA | CHINA | USA | INDIA | MALAYSIA | BRAZIL

Headquarters:

Via dell'Industria, 2
33030 Coseano (UD), Italy

T. +39 0432 863 611
info@pmp-industries.com
www.pmp-industries.com

