



**ELECTRIC
VEHICLE DRIVELINE
DIVISION**



**POWER
TRANSMISSION
DIVISION**



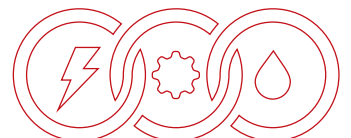
**FLUID
POWER
DIVISION**

COMPLETE SOLUTIONS FOR THE MATERIAL HANDLING INDUSTRY



PMP

THE APPLICATION SPECIALIST





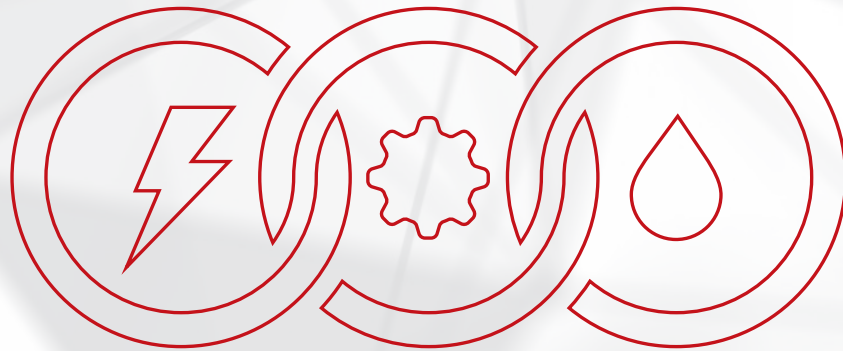
INTEGRA



INTEGRA

Our philosophy and our vision.

INTEGRA is a leap into the future.



**INTEGRA is the interaction and integration of complex systems:
Electronic, Mechanical and Hydraulic systems.**

The interaction between our Research & Development department and our internal training structure and the strategic alliances with premium research labs and Universities are the base of the **PMP technological hub** where INTEGRA project has been developed.

**PMP TECHNOLOGICAL HEART PULSES WITH THE SINGLE GOAL TO INNOVATE.
IT PULSES TO CREATE THE TECHNOLOGIES OF THE FUTURE.**

This clear business model makes INTEGRA the winning solution for the future.

Three business divisions (POWER TRANSMISSION, FLUID POWER and ELECTRIC DRIVELINE VEHICLE Divisions) bring together the best electronic, hydraulic and mechanical technologies to create unique technical solutions suitable for each application.

INTEGRA is the future and it is now available at PMP.



COMPLETE INTEGRATED SOLUTIONS FROM A SINGLE SUPPLIER

Durability, efficiency and serviceability

PMP designs and manufactures **reliable solutions** for the Material Handling Industry providing a **range of solutions developed and tailored on** specific application and on customer needs.

OVERVIEW

PMS are efficient, reliable and quiet drive systems for electric industrial vehicles. PMP offers both PMS dual drives with integrated **PMP electric motors** and PMS axles, depending of equipment type and size.

PMC track drives are designed and manufactured for applications in harsh environments. **PMR** wheel drives are used on applications where flexible hydraulic or electric traction is required. These drives can be integrated with **PMH MK** plug-in type motors designed for high pressure heavy duties applications

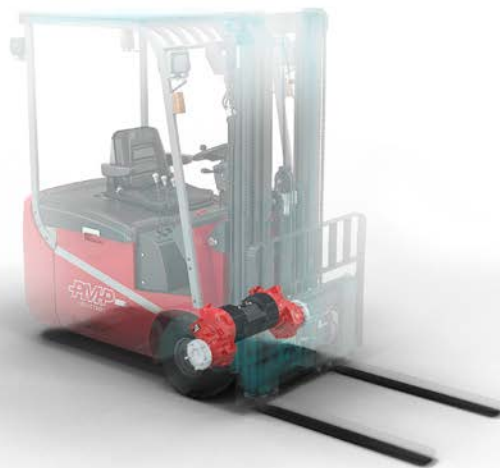
PMT swing drives for accurate rotation systems.

PMH P are high pressure axial piston pumps and features a wide range of controllers from manual MS, to electric proportional EP, to special controllers like MY, RE, RSE specifically designed for special application.

PMP

THE APPLICATION SPECIALIST

ELECTRIC
INDUSTRIAL VEHICLES



PMS

Integrated Dual Drives

PMP pioneers the development of dual drive solutions for electric industrial vehicles offering a unique range of gearboxes with integrated electric motor and controller



PMS

Drives Axles

PMP offers axles with single and dual motor architecture, specifically designed for maximum compactness and featuring superior brake technology



Specifications

	PMS	601 / 621 / 625	701	855	880
Max output torque	Nm	1.700	3.000	5.000	10.000
Max wheel load	Kg	2.800	4.400	6.200	9.000
Available ratios	l:	18 - 42	17 - 31	20 - 36	28
Typ. electric motor power	kW	5	10	16	20
Forklift capacity	t	1 - 2.5	2.5 - 3.5	4.0 - 5.5	6.0 - 8.0
Tow tractors capacity	t	10	30	50	80



PMS drives offer different solutions for the brake: from wet disk service and SAHR parking brake to EM parking and service brake



Reliability of PMS drives is proved by more than 30-year experience in the field and guaranteed by the severe testing procedures of PMP assembly lines



The integration of the controller into the motor housing, allows compact dimensions, reduced wiring complexity and setup time. Motor tuning and speed sensor are part of the solution



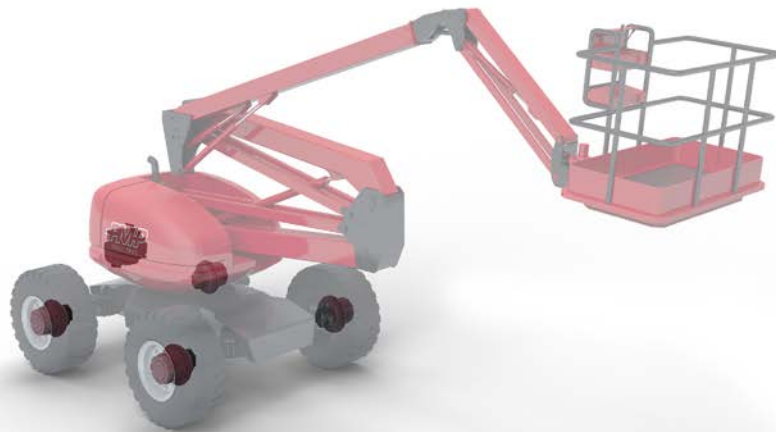
PMP electric motors are tailored on each specific application. This guarantees high efficiency and the best performances compared to standard motors



PMP

THE APPLICATION SPECIALIST

AERIAL PLATFORMS



PMR

Travel

Drives

Featuring wet disk parking brakes and mechanical disengage system, PMR wheel drives can be used on all applications where reliability, strength and smoothness of operation are required.

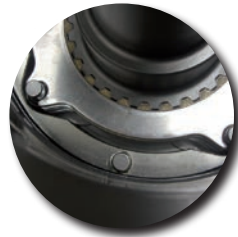


Specifications

PMR		400	500BL	680	710	2000	4000
Max output torque	Nm	3.700	5.000	7.000	11.500	20.000	40.000
Max input speed	rpm	4.100	4.100	3.500	3.500	3.500	3.500
Available ratios	1:	99	160	18-55	74	19-169	76-146
Weight	kg	50	42	50	63	110	180



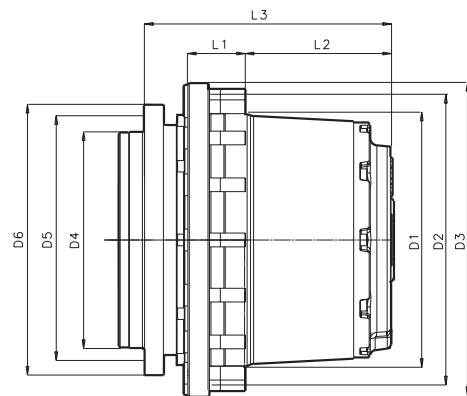
PMR gearboxes feature special gear profiles, in order to optimize gear contact at all torque and loading conditions



PMR gearboxes can offer static and dynamic brake systems, developed and tested by PMP R&D department

Dimensions

PMR	400	500BL	680	710	2000	4000
L1	200	107	107	72	96	91
L2	30	102	112	148	201	218
L3	255	228	258	258	297	344
D1	110	200	200	220	280	350
D2	160	254	241	275	330	400
D3	200	278	278	310	370	435
D4	255	222	179	180	270	300
D5	284	254	209	230	300	285
D6	310	286	242	260	330	383,4



PMH MKV

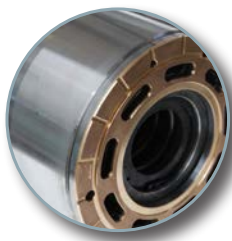
Plug-in type hydraulic motors

PMH MKV are **variable displacement** plug-in type hydraulic motors designed for mounting on PMC and PMR gearboxes.



Specifications

PMH MKV		45	55
Displacement	cc/rev	45	55
Max output speed	rpm	4.300	4.300
Max working pressure	bar	350	500
Max output torque	Nm	300	350
Weight	kg	25	25



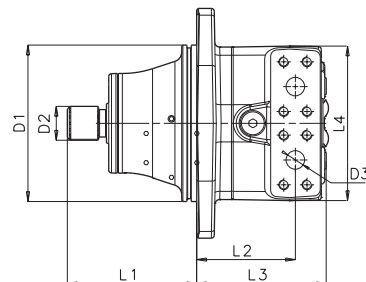
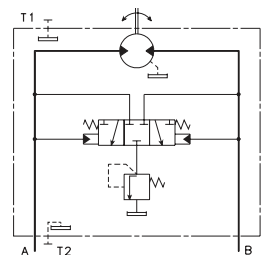
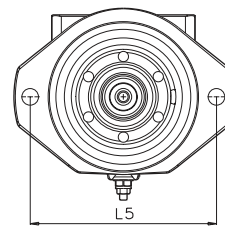
PMP motors feature 500 bar pressure technology, which makes them extremely solid for the toughest applications and conditions



MKV motors offer a wide range of controls: HD (hydraulic direct), HP (hydraulic two position), E1-E2 (electric two position) and autoshift options on request

Dimensions

PMH MKV	45	55
L1	115	132
L2	95	110
L3	145	154
L4	171,5	158
L5	160	200
D1	135	160
D2	DIN 5480	
D3	-	19



PMH MKF version

PMH P

Hydraulic Pumps

PMH high pressure axial piston pumps for closed loop are specifically designed to be used on heavy duty machines for traction and auxiliary functions, providing efficiency and durability.



Specifications

PMH P		35	45	55	72	90	110
Displacement	cc/rev	35	45	55	72	90	110
Max shaft speed	rpm	4.500	4.500	4.300	4.100	4.000	3.800
Max pressure	bar	400	380	500	500	500	500
Input torque @250 bar	Nm	225	236	350	480	570	700
Weight	kg	39	46	42	56	68	68



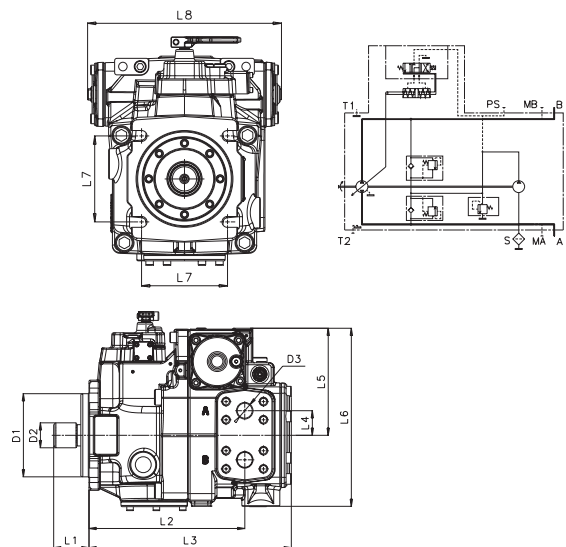
Wide range of controllers from manual MS, to electric proportional EP, to special controllers like MY, RE specifically designed for special applications



Upon request, pumps can feature an additional valve block to include flushing valve, by pass system, dead man valve, cut off valve

Dimensions

PMH P	35	45	55	72	90	110
L1	41	46	56	53,9	53,9	53,9
L2	189,2	189,2	210	238	238	238
L3	246,9	251,2	265	309	309	309
L4	37,5	37,5	42	37,5	37,5	37,5
L5	143	143	130	163	163	161,8
L6	242	280,5	228	271,5	271,5	270,3
L7	146	146	114,4	114,4	114,4	114,4
L8	241	299,5	221	258	258	258
D1	101,6	101,6	127	127	127	127
D2	ANSI B92.1					
D3	-	25,4	25,4	25,4	25,4	25,4



FMP

THE APPLICATION SPECIALIST

CRAWLER CRANES, TRUCK CRANES,
RUBBER CRANE, SHIP CRANE





PMCI

Integrated Travel Drives

PMCI drives integrate high pressure and high speed motors into solid planetary gearboxes

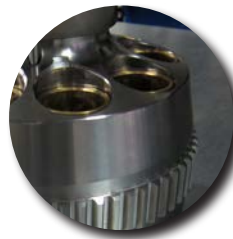


Specifications

PMCI		4000	4500	6000	9000	11000
Available ratios	1:	62-73	80-113	60-142	65-183	172,8
Max output torque	Nm	40.000	45.000	62.000	90.000	110.000
Displacement max	cc	110	110	180	180	180
Max pressure	bar	350	350	350	350	280
Park brake torque	Nm	335	335	600	800	593
Weight	kg	260	260	370	495	505



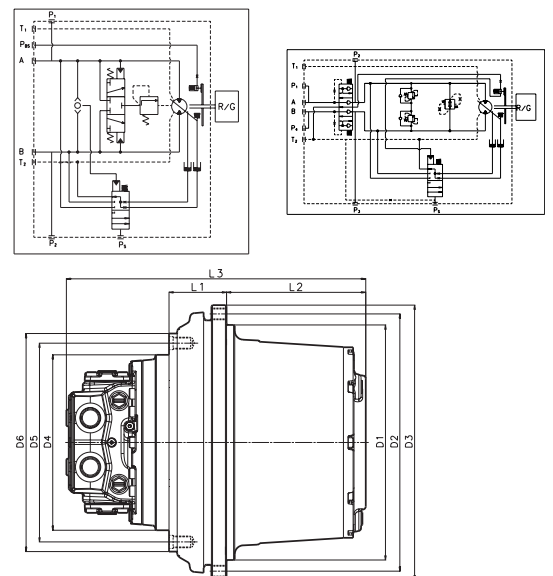
PMCI series feature special counterbalance valve designed by PMP R&D department, featuring smooth braking and prompt start up



PMCI motors feature 500 bar pressure technology, which makes them extremely solid for the toughest applications and conditions

Dimensions

PMCI	4000	4500	6000	9000	11000
L1	98,5	98,5	102,5	148	165
L2	216	240	283	317	317
L3	490	513	535	607	607
D1	402	402	450	460	460
D2	440	440	492	510	500
D3	470	470	525	550	540
D4	300	300	380	410	420
D5	340	340	440	455	460
D6	373	382,5	480	493	500



PMT

Swing

Drives

PMT swing drives are designed for construction machinery where the rotation of the upper structure requires reliability and accurate positioning



Specifications

PMT		650	1000
Max output torque	Nm	40.000	45.000
Max input speed	rpm	3.500	3.500
Available ratios	1:	76-146	55-135
Weight	kg	180	190
Concrete pump size	m ³	24 - 30	30 - 36



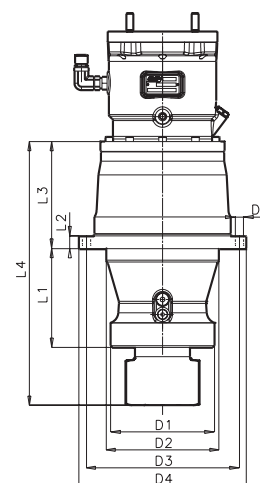
PMT gearboxes feature dedicated brake systems which can be operated for parking and service functions, increasing safety and accuracy



Planetary gear structure is designed to minimize deformation under load, maintaining the best gear contact in every condition

Dimensions

PMT	680	700
L1	107	72
L2	112	166
L3	258	273
D1	200	220
D2	241	275
D3	278	310
D4	179	190
D5	209	230
D6	242	270



GLOBAL PRESENCE. WORLDWIDE GROWTH

Locations



THE APPLICATION SPECIALIST

info@pmp-industries.com
www.pmp-industries.com

NORTH & CENTRAL AMERICA

sales.usa@pmp-industries.com
T. +1 513 563 3028

SOUTH AMERICA

sales.sa@pmp-industries.com
T. +39 0432 863 625



WESTERN EUROPE

sales.eu@pmp-industries.com
T. +39 0432 863 611

INDIA

sales.ind@pmp-industries.com
T. +91 2135 625 400

CHINA

sales.cn@pmp-industries.com
T. +86 (512) 8270 6688

RUSSIA & EASTERN EUROPE

sales.ru@pmp-industries.com
T. +39 0432 863 670

REST OF THE WORLD

sales.@pmp-industries.com
T. +39 0432 863 611

SOUTH EAST ASIA

sales.sea@pmp-industries.com
T. +60 12 699 2981



THE APPLICATION SPECIALIST

PMP Industries group

ITALY | BOSNIA | CHINA | USA | INDIA | MALAYSIA | BRAZIL

Headquarters:

Via dell'Industria, 2
33030 Coseano (UD), Italy

T +39 0432 863 611

F +39 0432 861 333

info@pmp-industries.com

www.pmp-industries.com

