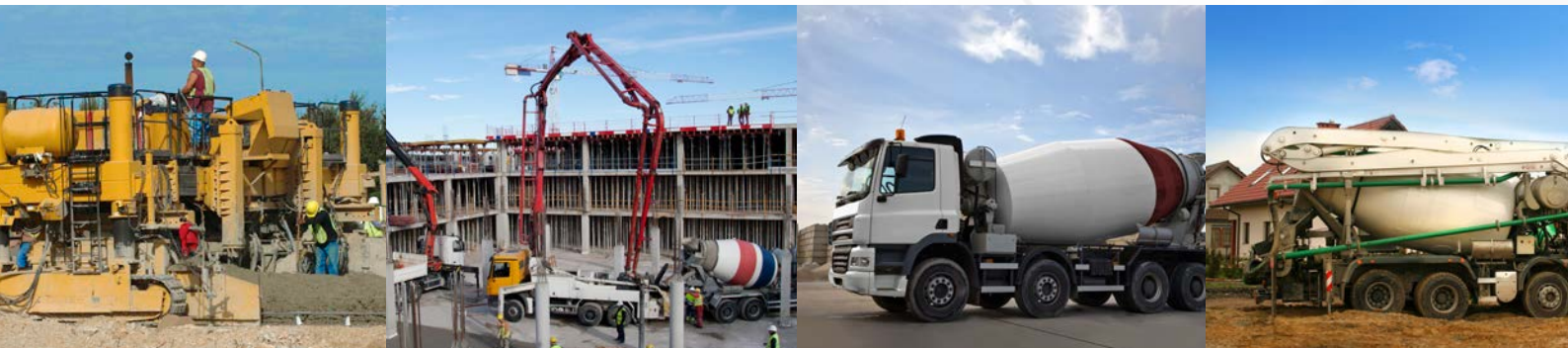
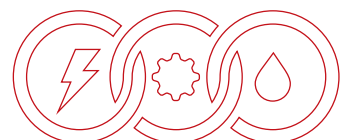


COMPLETE SOLUTIONS FOR THE CONCRETE INDUSTRY



PMP

THE APPLICATION SPECIALIST





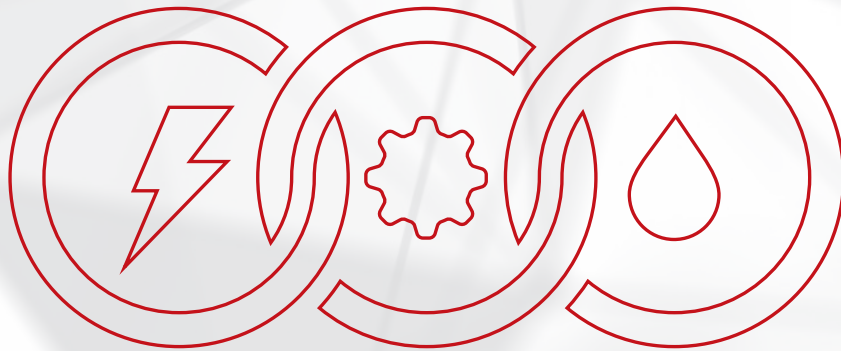
INTEGRA



INTEGRA

Our philosophy and our vision.

INTEGRA is a leap into the future.



**INTEGRA is the interaction and integration of complex systems:
Electronic, Mechanical and Hydraulic systems.**

The interaction between our Research & Development department and our internal training structure and the strategic alliances with premium research labs and Universities are the base of the **PMP technological hub** where INTEGRA project has been developed.

**PMP TECHNOLOGICAL HEART PULSES WITH THE SINGLE GOAL TO INNOVATE.
IT PULSES TO CREATE THE TECHNOLOGIES OF THE FUTURE.**

This clear business model makes INTEGRA the winning solution for the future.

Three business divisions (POWER TRANSMISSION, FLUID POWER and ELECTRIC DRIVELINE VEHICLE Divisions) bring together the best electronic, hydraulic and mechanical technologies to create unique technical solutions suitable for each application.

INTEGRA is the future and it is now available at PMP.



COMPLETE INTEGRATED SOLUTIONS FROM A SINGLE SUPPLIER

Durability, efficiency and serviceability

PMP designs and manufactures **reliable solutions** for the concrete Industry providing a **range of solutions developed and tailored on** specific application and on customer needs.

OVERVIEW

PMBEC compact gearboxes. “EC” stands for Evolution Compact: exceptional weight and space reduction have been achieved.

PMB gearboxes cover the widest range of applications on Mixer trucks and trailers: up to 20 cubic meters drum capacity.

PMC track drives integrate PMP’s long term experience in harsh environment applications with dedicated design solutions for each specific equipment. The Final result is increased durability even in the toughest conditions.

PMT swing drives are designed for the application on mobile and industrial machinery whenever the rotation of a structure or a device is requested. PMT swing drives feature compact dimensions, durability, simple mounting for a perfect match between pinion and ring gear.

PMH high pressure axial piston **pumps** and **motors** are specifically designed to be used on heavy duty machines for traction and auxiliary functions, providing efficiency and durability.

PMP

THE APPLICATION SPECIALIST

CONCRETE MIXER TRUCKS



PMBEC

Mixer Truck

Gearboxes

PMBEC is a compact Mixer Truck gearbox integrated with a **high technology high pressure PMP hydraulic motor**.



Specifications

		PMB	5EC	7EC
Max output torque	Nm		39.000	70.000
Ratio	l:		121,6	155,7
Displacement	cc/rev		35 - 47	62 - 72
Max Pressure	k		450	450
Weight	kg		175	285
Max Drum Capacity	m ³		3 - 5	9 - 12



PMB gearboxes feature **special main bearing developed by PMP R&D**

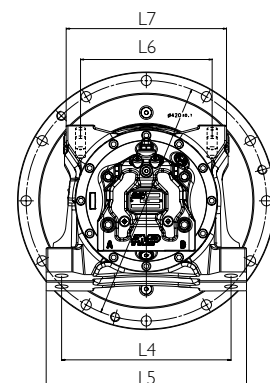
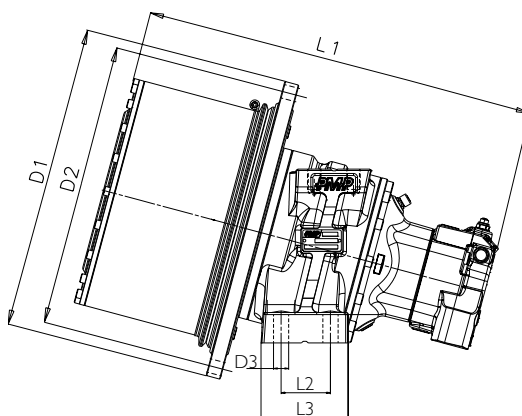
department thanks to more than 30 year experience in the field



Outstanding weight reduction (40%) and outstanding length reduction (55%) outside of the mixer compared to traditional solution.

Dimensions

	PMB	5EC	7EC
L1	546	645	
L2	73	67 + 53	
L3	125,6	190,5	
L4	296	400	
L5	350	460	
L6	230	280	
L7	280	310	
D1	390	530	
D2	360	500	
D3	22,5	22,5	



PMB

Mixer Truck

Gearboxes

PMB gearboxes provide the **highest levels of reliability, efficiency and durability** in harsh environments and in the toughest conditions, thanks to its lean and solid design.

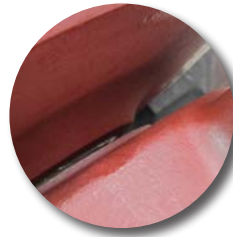


Specifications

PMB		6	6.5	7.1	7.8	9
Max output torque	Nm	60.000	65.000	70.000	80.000	93.000
Max input speed	rpm	2.500	2.500	2.500	2.500	2.800
Available ratios	1:	100	120	120 or 130	130 or 140	151,3
Weight	kg	250	290	305	345	390
Max Drum Capacity		8	10	12	16	>20



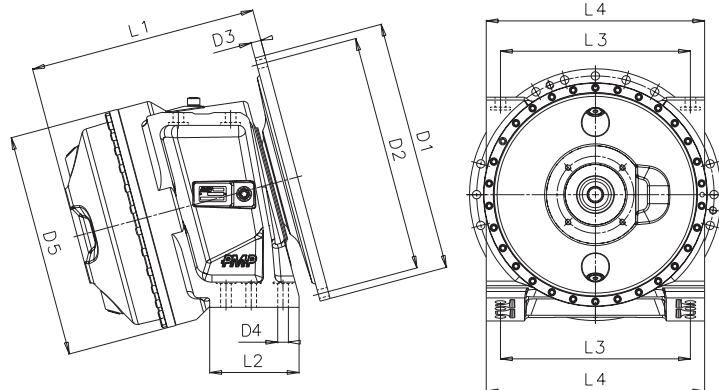
PMP supplies **complete transmission systems**, including gearbox, hydraulic motors and pumps, water pumps



PMB gearboxes feature an **additional protection profile** on the output flange to reduce the risk of seal damage

Dimensions

PMB	6	6.5	7.1	7.8	9
L1	459,4	478,4	480	486	496
L2	187	188	188	188	210
L3	400	400	400	400	400
L4	460	460	460	460	460
D1	530	530	530	530	530
D2	500	500	500	500	500
D3	21,5	21,5	21,5	21,5	21,5
D4	22,5	22,5	22,5	22,5	22,5
D5	440,5	470	470	503	552



PMH P

Hydraulic

Pumps

PMH high pressure axial piston pumps for closed loop are **specifically designed to be used on heavy duty machines** for traction and auxiliary functions, providing efficiency and durability.

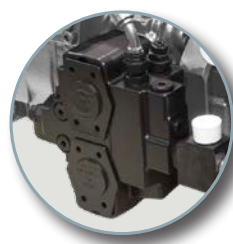


Specifications

PMH P		55	72	90	110
Displacement	cc/rev	55	72	90	110
Max shaft speed	rpm	4.300	4.100	4.000	3.800
Max pressure	bar	500	500	500	500
Input torque @250 bar	Nm	350	480	570	700
Weight	kg	42	56	68	68



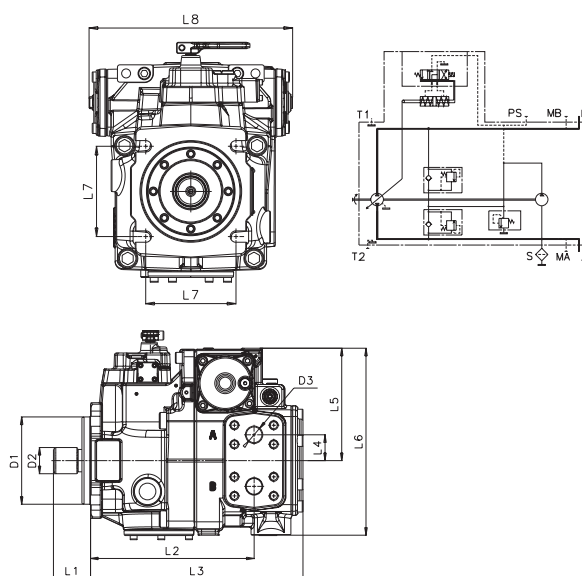
Wide range of controllers from manual MS, to electric proportional EP, to special controllers like MY, RE specifically designed for special applications



Upon request, pumps can feature **an additional valve block** to include flushing valve, by pass system, dead man valve, cut off valve

Dimensions

PMH P	55	72	90	110
L1	56	53,9	53,9	53,9
L2	210	238	238	238
L3	265	309	309	309
L4	42	37,5	37,5	37,5
L5	130	163	163	161,8
L6	228	271,5	271,5	270,3
L7	114,4	114,4	114,4	114,4
L8	221	258	258	258
D1	127	127	127	127
D2	ANSI B92.1			
D3	25,4	25,4	25,4	25,4



PMH M

Hydraulic Motors

PMH M are fixed displacement motors for closed loop specifically designed to be used on heavy duty machines **for traction and auxiliary functions, providing efficiency and durability.**



Specifications

PMH M		MCF 55	72	90	110
Displacement	cc/rev	55	72	90	110
Max shaft speed	rpm	4.300	4.100	4.000	3.800
Max pressure	bar	500	500	500	500
Input torque @250 bar	Nm	350	480	570	700
Weight	kg	42	56	68	68



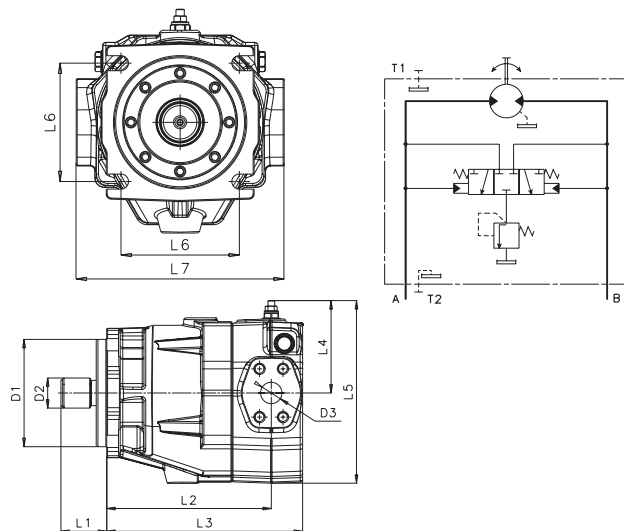
PMP motors feature **500 bar pressure technology**, which makes them extremely solid for the toughest applications and conditions

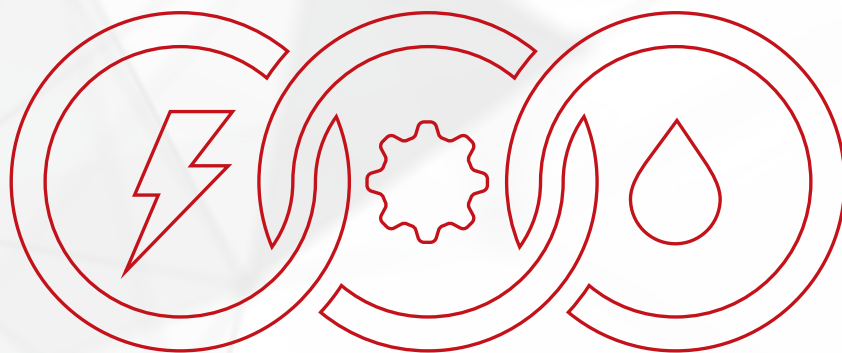


All PMP motors offers **integrated flushing valves** for closed loop applications

Dimensions

PMH M	55	72	90	110
L1	54,1	54,1	54,1	54,1
L2	174	188	194,8	194,8
L3	210	230	232	232
L4	102,4	105,3	109	109
L5	192,2	206,6	216	216
L6	114,4	114,4	114,4	114,4
L7	170	183	201	201
D1	127	127	127	127
D3	ANSI B.92.1			
D3	19	25,4	25,4	25,4





PMP

THE APPLICATION SPECIALIST

CONCRETE PUMPS



PMT

Swing

Drives

PMT swing drives are designed for construction machinery where the rotation of the upper structure requires **reliability and accurate positioning**



Specifications

PMT		650	1000
Max output torque	Nm	40.000	45.000
Max input speed	rpm	3.500	3.500
Available ratios	1:	76-146	55-135
Weight	kg	180	190
Concrete pump size	m ³	24 - 30	30 - 36



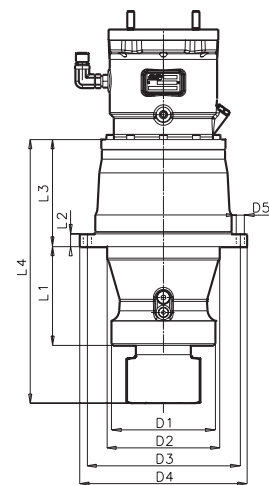
PMT gearboxes feature **dedicated brake systems** which can be operated for parking and service functions, increasing safety and accuracy



Planetary gear structure is designed to minimize deformation under load, maintaining the **best gear contact** in every condition

Dimensions

PMT	680	700
L1	107	72
L2	112	166
L3	258	273
D1	200	220
D2	241	275
D3	278	310
D4	179	190
D5	209	230
D6	242	270



PMH P

Hydraulic Pumps

PMH high pressure axial piston pumps for closed loop are **specifically designed to be used on heavy duty machines** for traction and auxiliary functions, providing efficiency and durability.



Specifications

PMH P		55	72	90	110
Displacement	cc/rev	55	72	90	110
Max shaft speed	rpm	4.300	4.100	4.000	3.800
Max pressure	bar	500	500	500	500
Input torque @250 bar	Nm	350	480	570	700
Weight	kg	42	56	68	68



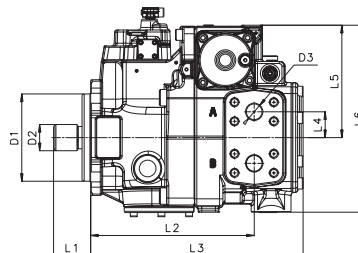
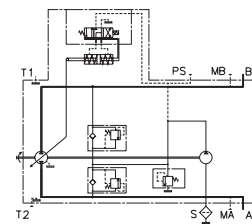
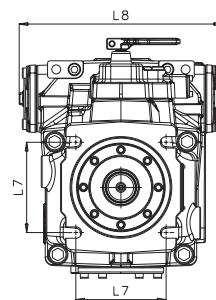
Wide range of controllers from manual MS, to electric proportional EP, to special controllers like MY, RE specifically designed for special applications

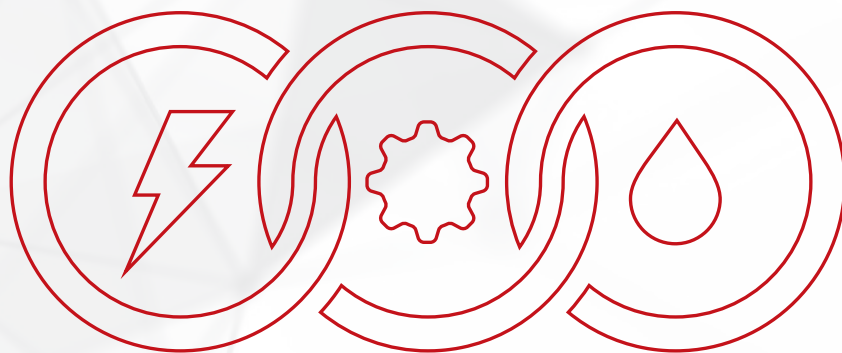


Upon request, pumps can feature **an additional valve block** to include flushing valve, by pass system, dead man valve, cut off valve

Dimensions

PMH P	55	72	90	110
L1	56	53,9	53,9	53,9
L2	210	238	238	238
L3	265	309	309	309
L4	42	37,5	37,5	37,5
L5	130	163	163	161,8
L6	228	271,5	271,5	270,3
L7	114,4	114,4	114,4	114,4
L8	221	258	258	258
D1	127	127	127	127
D2	ANSI B92.1			
D3	25,4	25,4	25,4	25,4







PMP

THE APPLICATION SPECIALIST

ASPHALT PAVER

PMC

Travel

Drives

PMC planetary gearboxes combined with electric or hydraulic motors are **specifically designed for heavy duty tracked application.**



Specifications

PMC	4000	4500	6000	9000	11000	26000
Max output torque [Nm]	40.000	45.000	62.000	90.000	110.000	260.000
Max input speed [rpm]	3.500	3.500	3.000	3.000	3.000	3.200
Available ratios [1:]	76-146	55-135	99-170	62-231	84.7	235.3
Weight [kg]	180	190	280	445	450	1015



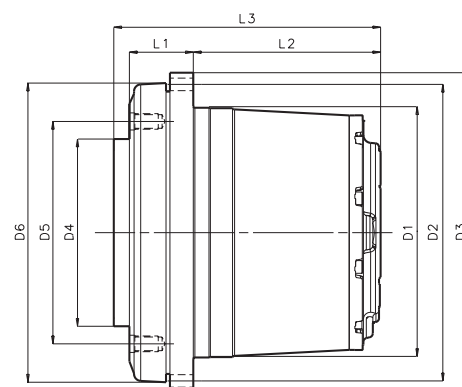
PMP can offer **up to three levels of protection** from dirt according to the application, including duo cone seal, v-ring, guard ring



PMC feature the well-known **wet disk brake technology** with high pressure seals for very low and very high working temperature

Dimensions

PMC	680	700	1200	2000	3000	4000
L1	107	72	96	96	82	91
L2	112	166	201	201	240	218
L3	258	273	297	297	342	344
D1	200	220	280	280	320	350
D2	241	275	330	330	380	400
D3	278	310	370	370	410	435
D4	179	190	270	270	240	300
D5	209	230	300	300	285	285
D6	242	270	330	330	383,4	383,4



PMH P

Hydraulic Pumps

PMH high pressure axial piston pumps for closed loop are **specifically designed to be used on heavy duty machines** for traction and auxiliary functions, providing efficiency and durability.



Specifications

PMH P		55	72	90	110
Displacement	cc/rev	55	72	90	110
Max shaft speed	rpm	4.300	4.100	4.000	3.800
Max pressure	bar	500	500	500	500
Input torque @250 bar	Nm	350	480	570	700
Weight	kg	42	56	68	68



Wide range of controllers

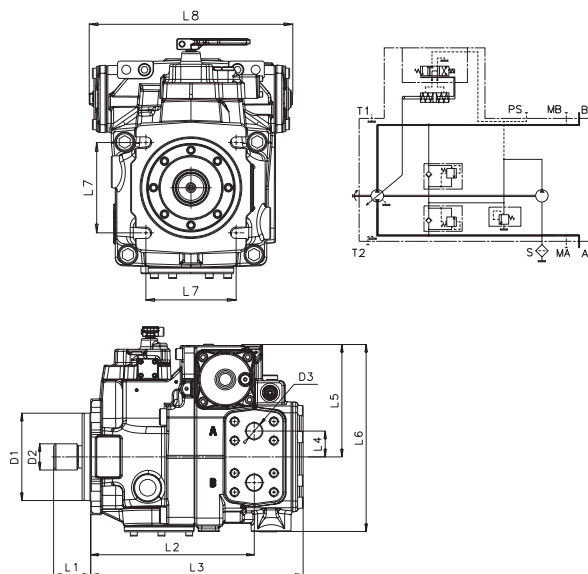
from manual MS, to electric proportional EP, to special controllers like MY, RE specifically designed for special applications



Upon request, pumps can feature an **additional valve block** to include flushing valve, by pass system, dead man valve, cut off valve

Dimensions

PMH P	55	72	90	110
L1	56	53,9	53,9	53,9
L2	210	238	238	238
L3	265	309	309	309
L4	42	37,5	37,5	37,5
L5	130	163	163	161,8
L6	228	271,5	271,5	270,3
L7	114,4	114,4	114,4	114,4
L8	221	258	258	258
D1	127	127	127	127
D2	ANSI B92.1			
D3	25,4	25,4	25,4	25,4



GLOBAL PRESENCE. WORLDWIDE GROWTH

Locations



THE APPLICATION SPECIALIST

info@pmp-industries.com
www.pmp-industries.com

NORTH & CENTRAL AMERICA

sales.usa@pmp-industries.com
T. +1 513 563 3028

SOUTH AMERICA

sales.sa@pmp-industries.com
T. +39 0432 863 625



WESTERN EUROPE

sales.eu@pmp-industries.com
T. +39 0432 863 611

INDIA

sales.ind@pmp-industries.com
T. +91 2135 625 400

CHINA

sales.cn@pmp-industries.com
T. +86 (512) 8270 6688

RUSSIA & EASTERN EUROPE

sales.ru@pmp-industries.com
T. +39 0432 863 670

REST OF THE WORLD

sales.@pmp-industries.com
T. +39 0432 863 611

SOUTH EAST ASIA

sales.sea@pmp-industries.com
T. +60 12 699 2981



INTEGRA



THE APPLICATION SPECIALIST

PMP Industries group

ITALY | BOSNIA | CHINA | USA | INDIA | MALAYSIA | BRAZIL

Headquarters:

Via dell'Industria, 2
33030 Coseano (UD), Italy

T +39 0432 863 611

F +39 0432 861 333

info@pmp-industries.com

www.pmp-industries.com

