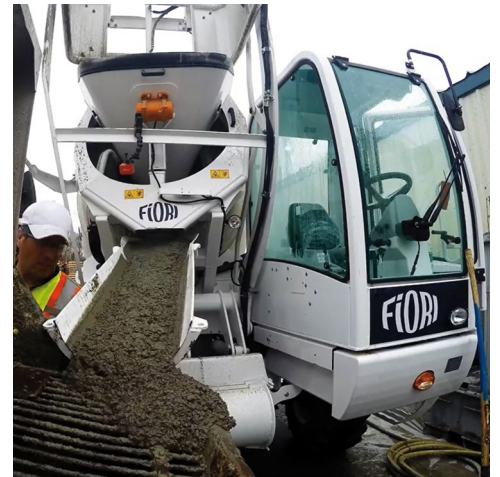


DB X35 BIG BAG

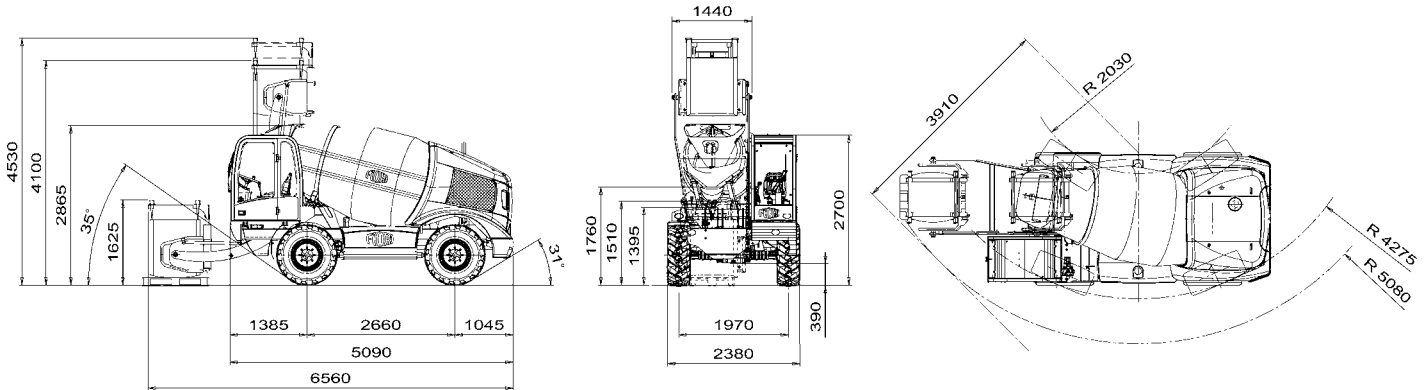


All pictures shown are for illustrative purposes only and may contain optional equipment.

MIXER SYSTEM

The big bag version of the DB X35, as well as offering all the advantages of the DB X35 and the CBV 2.0 system, is designed to produce concrete, mortars, and other mixes if necessary, using materials supplied in big bags. The ingredients can be pre-batched or contained in dedicated individual specifically sized bags, which increases flexibility in the preparation of different mixes. This technology, which is patented by FIORI GROUP, separates the production of concrete on site from the management of aggregates piled up on site which - apart from being easily contaminated with water or other materials - take up more room and create considerable inconvenience. This kind of self-loading concrete mixer is ideal for producing high and very high quality factory pre-batched concrete, which can be mixed on site just before casting.

FIORI



DIESEL ENGINE	No emission compliance	Stage IIIA / Tier 3	Tier 4 Final EPA	Stage V
Model :	PERKINS serie 1104	PERKINS serie 1104	KOHLER series KDI 3404 TCRSCR	PERKINS serie 904J-E36TA
Type :	Turbo	Turbo Intercooler	Turbo Intercooler	Turbo Intercooler
Total displacement :	4400cc - 4 in linea	4400cc - 4 in line	3400cc - 4 in line	3600cc - 4 in line
Injection :	Mechanical control with direct injection	Mechanical control with direct injection	Electronic control with Common Rail	Electronic control with Common Rail
Aftertreatment sys.:	-	-	EGR + DOC + SCR	EGR + DOC + DPF + SCR
Cooling :	air water, dry air filter	air water, dry air filter	air water, dry air filter	air water, dry air filter
Maximum power :	82.5 kW (112 Hp)	83 kW (113 Hp)	90 kW (122 Hp)	90 kW (122 Hp)
Adj. power. :	82 kW (2400 rpm)	83 kW (2200 rpm)	90 kW (2200 rpm)	90 kW (2400 rpm)
Maximum torque :	404 Nm a 1400 rpm	418 Nm a 1400 rpm	500 Nm a 1400 rpm	500 Nm a 1500 rpm
Alternator :	12V - 65 A	12V - 65 A	12V - 90 A	12V - 120 A

ELECTRIC SYSTEM

Battery: 12 V - 132 Ah (600 A)
Road light system, front working light.

4X4 FOUR-WHEEL DRIVE

Hydrostatic "automotive" transmission with variable displacement pump and variable displacement hydraulic motor with electro-hydraulic control, and reverse gear control on the steering wheel.

Electro-hydraulically controlled mechanical gearbox for "working speed" and "road transfer" speed.

SPEED

4 forward gears 2 reverse gears
Ist 0 - 3.0 Km/h 0 - 3.0 Km/h
IInd 0 - 7.2 Km/h 0 - 3.0 Km/h
IIIrd 0 - 10.0 Km/h 0 - 10.0 Km/h
IVth 0 - 25.0 Km/h 0 - 10.0 Km/h
Traction / weight ratio 48%

AXLES AND WHEELS

Front and steering with planetary reduction gears on the wheel hubs and flanged gearbox. Rear, oscillating ($\pm 6^\circ$) and steering with planetary reduction gears on the wheel hubs.

Tyres:

Stage 0 - III A 405/70-20 16PR
Tier 4 Final EPA - Stage V 405/70-20 14PR

BRAKES

Internal oil-bath disc service and emergency brakes acting on the 4 wheels, activation with miniservo pump on independent dual circuit. Negative type parking brake, with internal oil-bath discs on the front axle and electro-hydraulically controlled release.

WATER SYSTEM

"Self-priming" volumetric water pump with quick-suction.

Max. capacity: 250 litres/min.
Maximum head: 4 bar
Two connected tanks positioned opposite each other made of polyethylene with a total capacity of 870 litres.

Water feeding to the drum controlled by means of electromagnetic flow meter and fed litre reading on the cabin display.

Water pump activation from the driver's seat. Suction selection from the ground with quick-coupling pipes.

MIXING AND UNLOADING

Double-cone drum with double-spiral mixing screws and convex bottom.

Geometrical drum volume: 5000 litres
Drum rotation speed: 20 rpm

Class S1 concrete produced as : 3.5 cu m
Drum rotation by means of a piston pump with variable flow rate and an orbital hydraulic motor in closed circuit with infinitesimal electrical control positioned in the cabin.

Unloading chute with hydraulic tilting by means of a double-acting jack and control placed inside the cabin.

1 unloading chute extension provided as standard equipment.

EQUIPMENT HYDRAULIC SYSTEM

Gear pump
Max. flow rate: 45 litres/min.

Maximum pressure: 230 bar
3-element distributor servo-controlled with multi-function joystick.

Aluminium heat exchanger for hydraulic oil cooling.

Pressurised closed-circuit intake with oil filter replaceable from the outside.

STEERING

Assisted by means of load-sensing power steering with double displacement on 4 steering wheels; steering selection device for: 2 steering wheels, 4 steering wheels - crab steering.

LOADING SYSTEM

Loading system for BIG BAGS with telescopic device for vertical position adjustment. Tempered steel blades for cutting BIG BAGS disposable bags. Automatic opening system for openable BIG BAGS. Automatically-operated hydraulic vibrator, located on the conveyor.

Max. lifting capacity 1100 kg.
Max. dimensions disposable BIG BAG

..... 800x800x900 mm

Max. dimensions openable BIG BAG.....
..... 900x900x960 mm

CAB

Closed cab with heating system, designed in accordance with ROPS & FOPS Level I standards. Tilting front window.

Anatomic seat with flexible suspension and height adjustment, seat belts.

LCD TV display with camera for rear visibility, optional/standard depending on engine type.

SERVICE REFILL CAPACITIES

Fuel tank: 85 litres

Total hydraulic system capacity: 120 litres

Engine oil: 7.96 kg

WEIGHTS

Operating weight 6300 kg

Max gross weight: 14800 kg

load-carrying capacity: 8700 kg