

# High Reach Demolition and not only...

HYDRAULIC EXCAVATOR ATTACHMENTS



cosben®

cosben

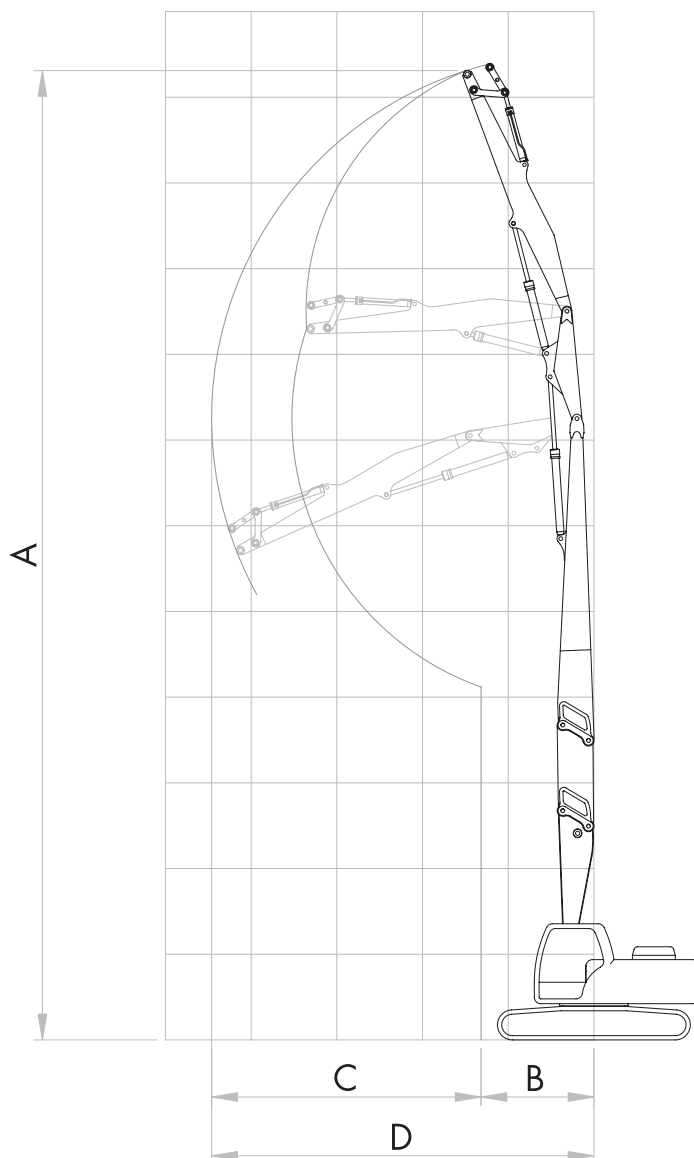
Rigorously tested and subjected to strict compliance tests, the demolition boom has been designed to exploit the potentialities of your working machine, maximising its advantages. The base boom was created from a project satisfying the requirements of both configurations: heavy or light excavation work and demolition work. Using the hydraulic or mechanical quick hitch, the changeover from one configuration to the other is immediate, thus optimising work time and allowing maximum flexibility of use.

## EXTREME VERSATILITY OF THE WORKING MACHINE

### WORKING EQUIPMENT

#### High reach demolition

- Base boom with quick mechanical or hydraulic hitch
- Removable extension boom
- Demolition boom
- Intermediate link
- Arm



Technical details			HRD			
Machine weight	ton		> 20,0	> 26,0	> 34,0	> 40,0
Number of stages			2	3	3	3
Maximum pin height	A	mtr	15,5	20,0	22,0/24,0	26,0/28,0
Minimum forward reach	B	mtr	2,5	2,6	3,5	4,0
Work field	C	mtr	-	6,2	7,0	8,3
Maximum forward reach	D	mtr	8,0	10,0	12,0	14,0
Maximum tool weight **		kgs	1200	1500	2000	2400
Linkage and tool		ton	14,0	16,0	16,0	22,0
Additional counterweight		kgs	1500	2000	2500	2500
Working equipment weight		kgs	3500	5000	6000	8000
Code			<b>13275DB</b>	<b>13276DB</b>	<b>13277DB</b>	<b>13278DB</b>

*N.B. These descriptions and data are given for information purposes only and are not binding for the makers who reserve the right to make any variations and modifications necessary for improving the quality of the equipment.*

\*\* The weight of the tool includes the hitch support and the quick hitch, and is with at full load when referring to excavation tools.

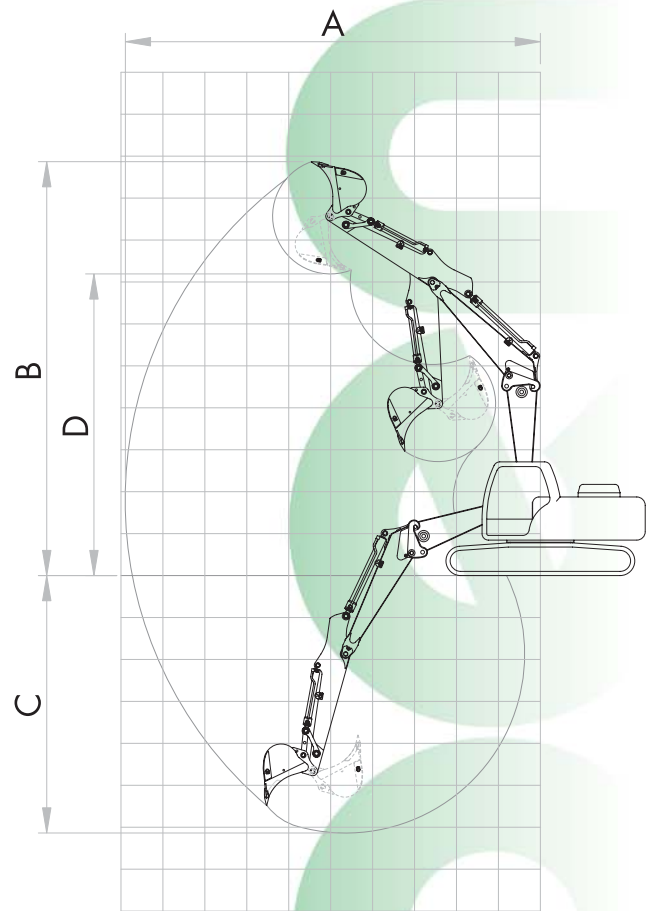
Equipment	HRD			
Boom mechanical quick hitch	S	S	S	S
Boom hydraulic quick hitch	O	O	O	O
Extension boom 2 metres length	-	-	O	O
Storage cradle	-	O	O	O
Rotate and shear pipe work	S	S	S	S

**S: Standard / O: Optional cost / - Not available**

## WORKING EQUIPMENT

### Digging boom bent configuration

- Base boom with quick hydraulic or mechanical hitch.
- Digging boom with 2 positions
- Excavation arm



### Technical details

### DIG

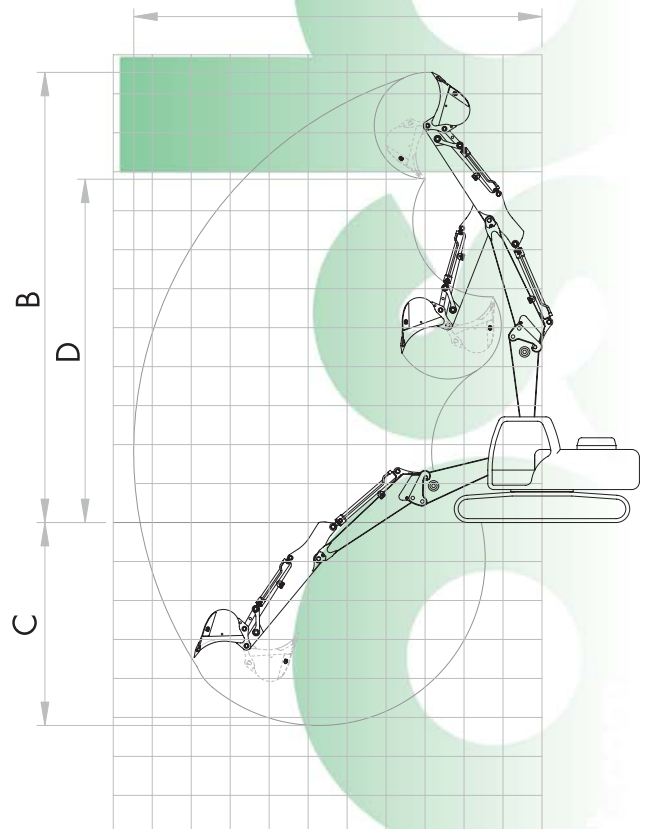
Machine weight	ton	> 20,0	> 26,0	> 34,0	> 40,0	
Maximum digging reach	A	mtr	9,9	11,0	11,5	12,0
Maximum digging height	B	mtr	9,8	10,2	10,7	10,9
Maximum digging depth	C	mtr	6,1	7,5	8,0	8,5
Maximum dumping height	D	mtr	7,2	7,3	7,5	8,0
Code		<b>13691DG</b>	<b>13692DG</b>	<b>13693DG</b>	<b>13694DG</b>	

*N.B. These descriptions and data are given for information purposes only and are not binding for the makers who reserve the right to make any variations and modifications necessary for improving the quality of the equipment.*

## WORKING EQUIPMENT

### Digging boom straight configuration

- Base boom with quick hydraulic or mechanical hitch.
- Digging boom with 2 positions
- Excavation arm



### Technical details

### DIG

Machine weight	ton	> 20,0	> 26,0	> 34,0	> 40,0	
Maximum digging reach	A	mtr	10,9	12,0	12,5	13,0
Maximum digging height	B	mtr	11,3	11,7	12,2	12,4
Maximum digging depth	C	mtr	5,1	6,5	7,0	7,5
Maximum dumping height	D	mtr	8,7	8,8	9,0	9,5
Code		<b>13691DG</b>	<b>13692DG</b>	<b>13693DG</b>	<b>13694DG</b>	

*N.B. These descriptions and data are given for information purposes only and are not binding for the makers who reserve the right to make any variations and modifications necessary for improving the quality of the equipment.*

### Equipment

### DIG

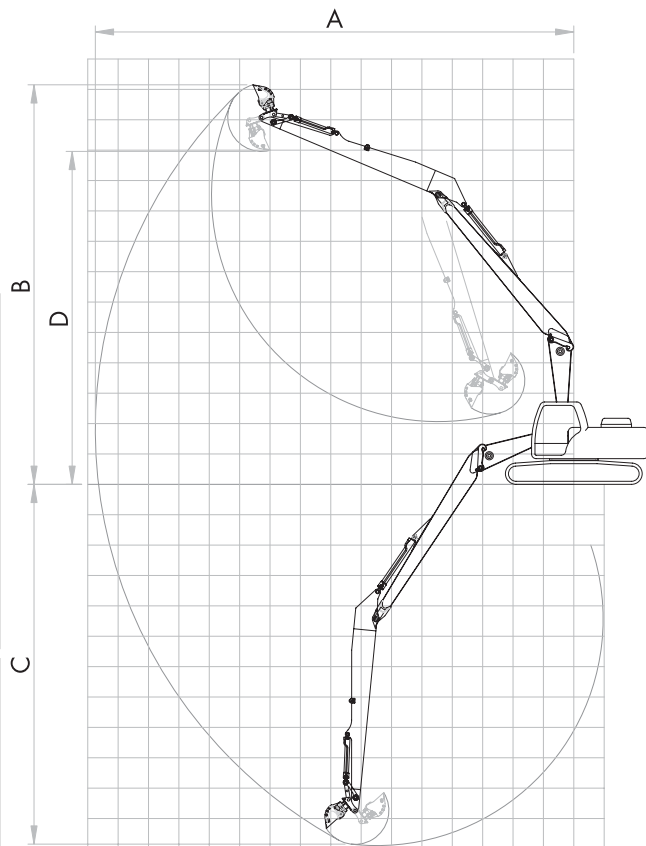
Machine weight	ton	> 20,0	> 26,0	> 34,0	> 40,0
Boom mechanical quick hitch		S	S	S	S
Boom hydraulic quick hitch		O	O	O	O
Storage cradle		-	O	O	O
Quick hitch pipe work		O	O	O	O

**S: Standard / O: Optional cost / - Not available**

## WORKING EQUIPMENT

### Long Reach Boom

- Base boom with quick mechanical or hydraulic hitch
- Digging boom
- Excavation arm



#### Technical details

#### LRF

Machine weight	ton	> 20,0	> 26,0	> 34,0	> 40,0	
Maximum digging reach	A	mtr	15,5	18,0	19,0	20,0
Maximum digging height	B	mtr	12,5	14,5	15,7	16,5
Maximum digging depth	C	mtr	11,5	13,5	14,0	15,0
Maximum dumping height	D	mtr	10,3	12,9	13,0	13,8
Code			<b>13695LR</b>	<b>13696LR</b>	<b>13697LR</b>	<b>13698LR</b>

*N.B. These descriptions and data are given for information purposes only and are not binding for the makers who reserve the right to make any variations and modifications necessary for improving the quality of the equipment.*

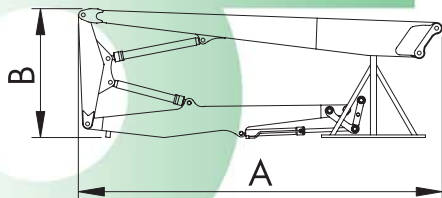
#### Equipment

#### LRF

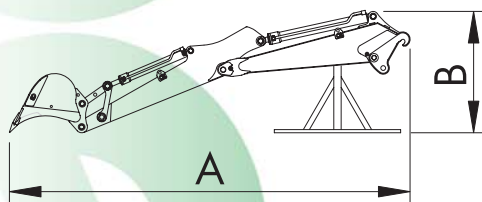
Machine weight	ton	> 20,0	> 26,0	> 34,0	> 40,0
Boom mechanical quick hitch		S	S	S	S
Boom hydraulic quick hitch		O	O	O	O
Storage cradle		-	-	-	-
Quick hitch pipe work		O	O	O	O

**S: Standard / O: Optional cost / - Not available**

### Demolition boom in three sections



### Excavation boom



#### Transport sizes

#### HRD

Machine weight	ton	> 20,0	> 26,0	> 34,0	> 40,0	
Overall length	A	mtr	-	8,0	9,5	12,0
Overall height	B	mtr	-	3,0	3,0	3,0
Working equipment weight	kgs	2700	4000	4500	6200	
Storage cradle weight	kgs	400	500	500	700	

#### Transport sizes

#### DIG

Machine weight	ton	> 20,0	> 26,0	> 34,0	> 40,0	
Overall length	A	mtr	6,0	7,0	8,5	11,0
Overall height	B	mtr	-	2,0	2,0	2,0
Working equipment weight	kgs	2700	4000	4500	6200	
Storage cradle weight	kgs	400	500	500	700	

### Essential equipment in the working machine:

- **Cabin tilting** from 25 to 30 degrees. (Not available)
- **The upper part of the cabin** must be in transparent reinforced plexiglass. (Not available)
- **The FOPS protections** must comply with the Level 2 ISO 10262 standard.
- **A second counterweight** specially designed for single machines. (optional)
- **A flatness indicator and a tilt indicator** avoid potential machine instability. (optional)
- **Anti-fall safety valve**, in all the hydraulic lines except for the terminal tool. (production series)

DEALER

# cosben®

Via Carrate, 1/D  
41030 SOLARA (MO) - ITALY  
Phn +39 059 801056 - Fax +39 059 801060  
www.cosben-it.com - info@cosben-it.com